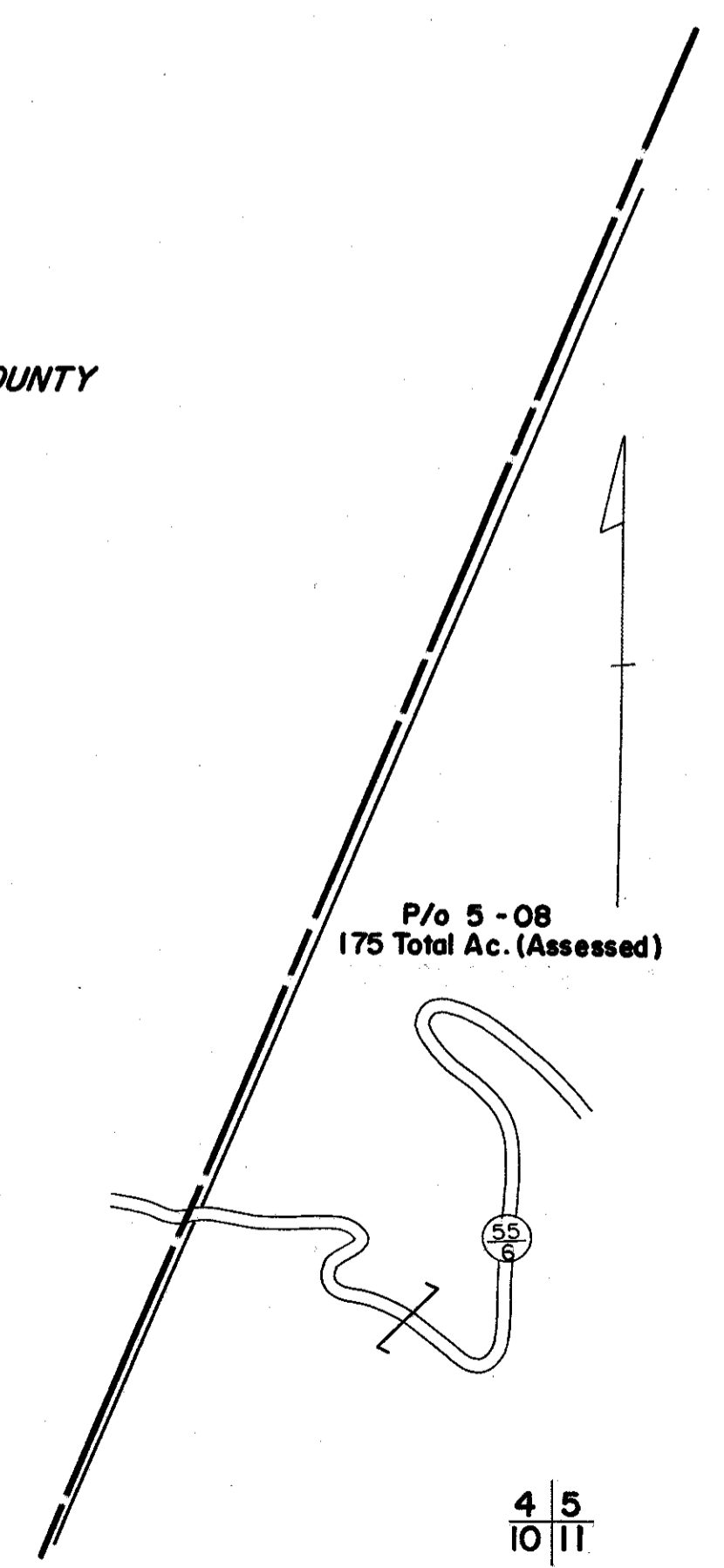


TYLER COUNTY



FOR TAX PURPOSES ONLY

Prepared by  
**L. ROBERT KIMBALL**  
*Consulting Engineer*  
 Ebensburg, Pennsylvania

156 IMPERIAL, A. 65, SMITH CO., PDR., PA., 91244-1782

Legend	
Property line	Original lot line
Edge of pavement or roadway	Dead lot number in parenthesis (15)
Corporation line	Parcel or index number in circle (20)
District line	Improvement
County line	Railroad

Revisions	
1	REVISED 7-81 T. Groves
2	Rev. to 7-1-89 R.E.B.
3	
4	
5	
6	
7	
8	

STATE OF WEST VIRGINIA  
 DODDRIDGE COUNTY  
 Office of Assessor

McCLELLAN DISTRICT  
 SHEET 04

Date, Aerial Photography: APRIL, 1962 Date, Map: SEPT., 1963  
 Photo No: 230 Scale: 1" = 400'