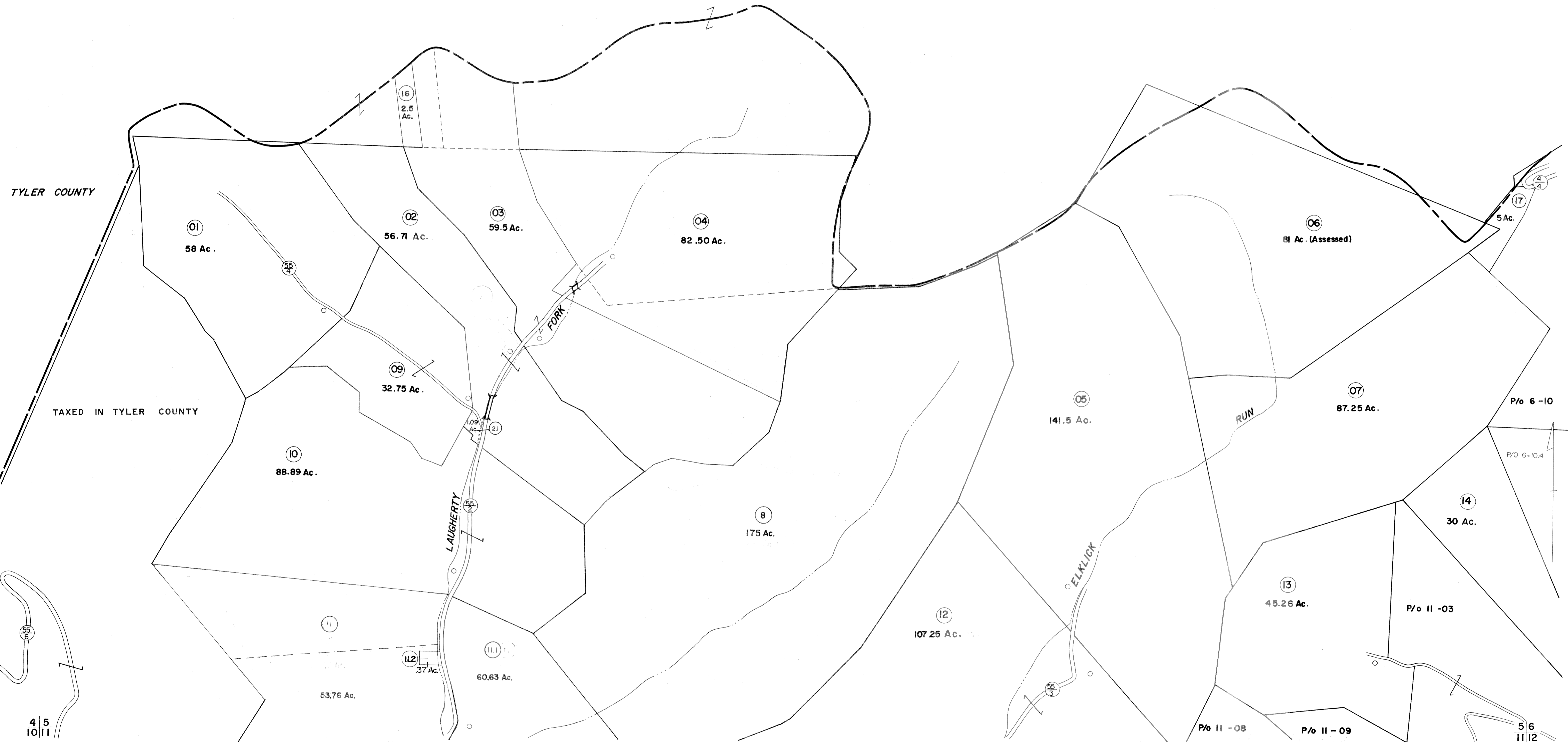


TYLER COUNTY



FOR TAX PURPOSES ONLY

Prepared by
L. ROBERT KIMBALL
 Consulting Engineer
 Ebensburg, Pennsylvania

Legend	
Property line	Original lot line
Edge of pavement or roadway	Deed lot number in parenthesis (15)
Corporation line	Parcel or index number in circle (99)
District line	Improvement
County line	Railroad

Revisions	
1	8-76 PW 9 OGIS 12-96 HD 17
2	HICKMAN 12/9/76 T.G. 10 SLS INC. 2/21/00 JAW 18
3	REVISED 7-81 T. Groves 11 ESI 3/27/01 REK 19
4	TO JULY 1982 C.P. 12 5-3-05 HRS 20
5	REV. TO 7-83 MEN 13 21
6	To 7-1-86 C.P. 14 22
7	Revised 16-1-87 15 23
8	OGIS 12-21-90 JB 14 24

STATE OF WEST VIRGINIA
 DODDRIDGE COUNTY
 Office of Assessor

McCLELLAN DISTRICT
 SHEET 05

Date, Aerial Photography: APRIL, 1962 Date, Map: SEPT., 1963
 Photo No: 250 Scale: 1" = 400'

156 WIREMAN, A. & SONS, SMITH CO., P.O., PA., 11741-1202