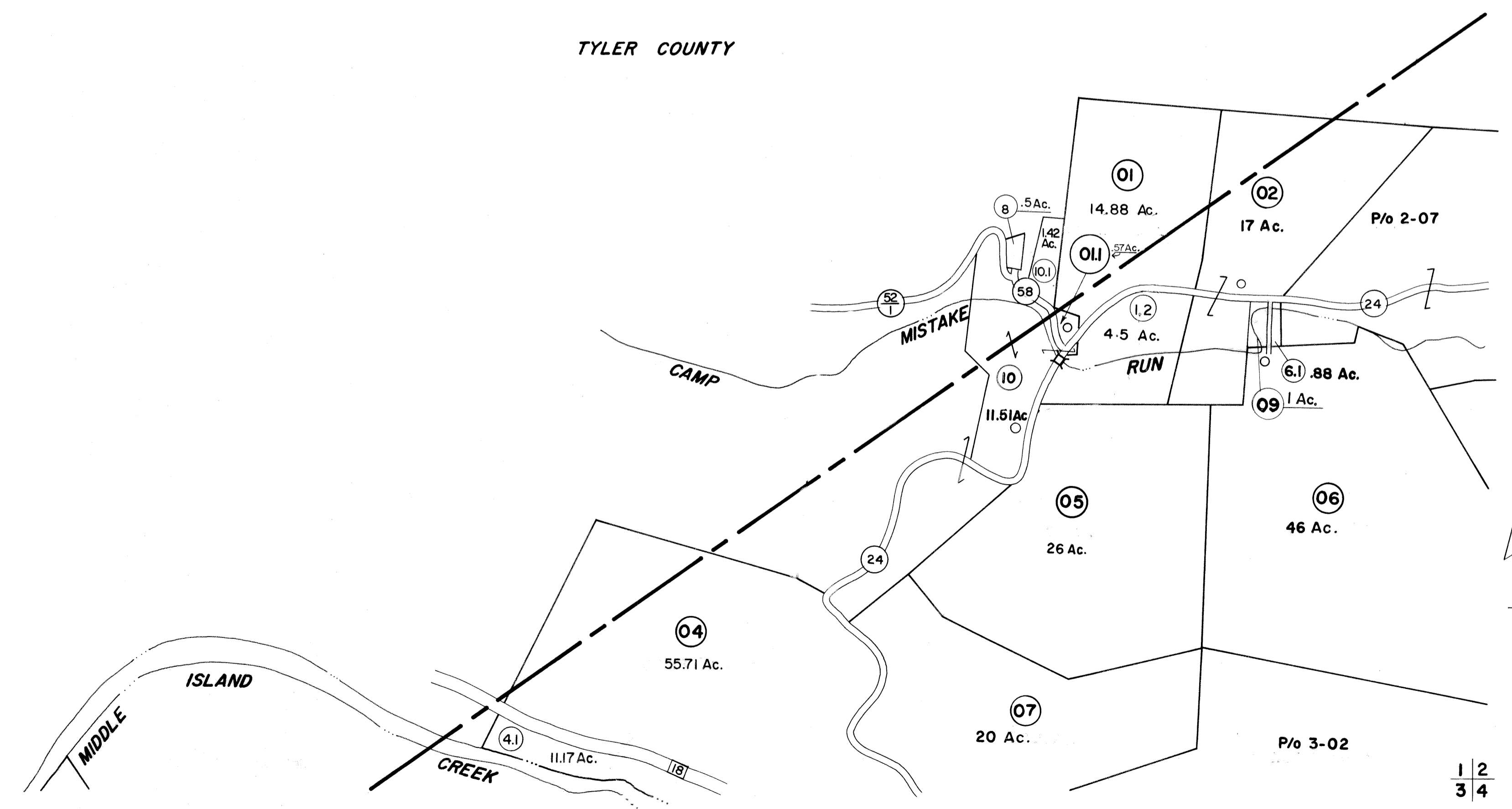


TYLER COUNTY



FOR TAX PURPOSES ONLY

Prepared by
L. ROBERT KIMBALL
 Consulting Engineer
 Ebensburg, Pennsylvania

Legend

Property line	Original lot line
Edge of pavement or roadway	Deed lot number in parenthesis (15)
Corporation line	Parcel or index number in circle (22)
District line	Improvement
County line	Railroad

Revisions

NO.	REVISION	DATE	BY	CHKD.
1	REVISED	3/11/64	OGIS	2-95 HD
2	REVISED	7-81	T. Groves	3C
3	REVISED	7-81	T. Groves	3C
4	REVISED	7-81	T. Groves	3C
5	REVISED	7-81	T. Groves	3C
6	REVISED	7-81	T. Groves	3C
7	OGIS	1-22-91	JB	RD
8	OGIS	11-93	RD	14
9	OGIS	2-95	HD	17
10	SLS INC.	2/16/99	DSW	18
11	ESI	3/7/02	REK	19
12		2/29/04	S.B.H	20
13				21
14				22
15				23
16				24

STATE OF WEST VIRGINIA
 DODDRIDGE COUNTY
 Office of Assessor

WEST UNION DISTRICT
 SHEET 01

Date, Aerial Photography: APRIL, 1962 Date, Map: DEC., 1963
 Photo No: 214; 216 Scale: 1"=400'

126 IMPERIAL, A. 33, SMITH CO., P.O. Box, PA. H1344-1262