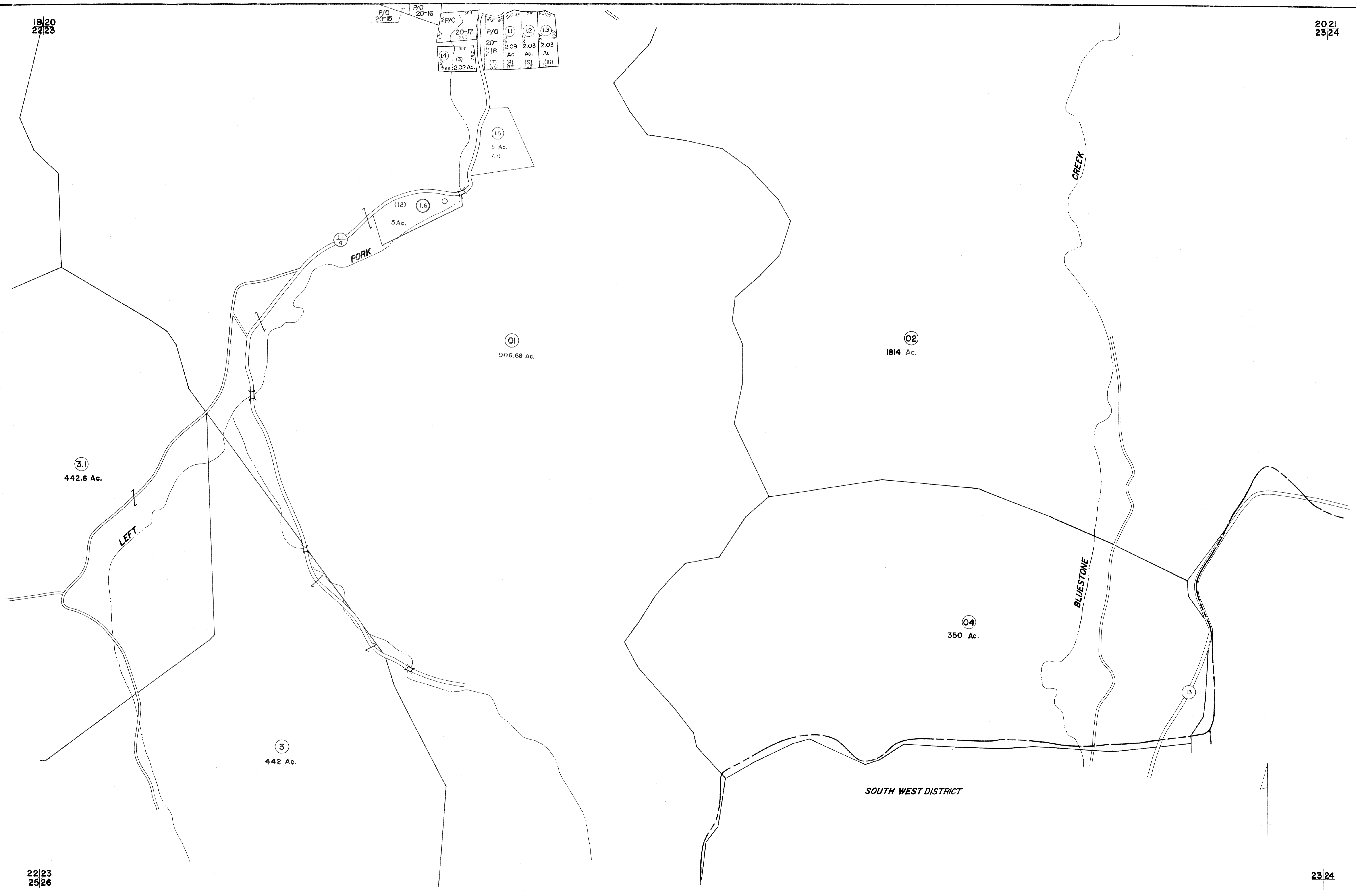


19/20
22/23

20/21
23/24

P/O 20-15	P/O 20-16	P/O 20-17	P/O 20-18	P/O 20-19	P/O 20-20
(3)	(7)	(8)	(9)	(10)	
2.02 Ac.	2.09 Ac.	2.03 Ac.	2.03 Ac.		



22/23
25/26

23/24

FOR TAX PURPOSES ONLY

Prepared by
L. ROBERT KIMBALL
Consulting Engineer
 Ebensburg, Pennsylvania

Legend	
Property line	Original lot line
Edge of pavement or roadway	Deed lot number in parenthesis (15)
Corporation line	Parcel or index number in circle (99)
District line	Improvement
County line	Railroad

Revisions			
1	REVISED 3/11/64	4/6/07	SBH
2	REVISED 7-81	T. Groves	
3	REV. TO 7-1-89	NCS	
4	OGIS 1-18-91	JB	
5	OGIS 10-25-91	NK	
6	OGIS 12-8-92	JEB	
7	O.G.I.S 1-23-96	J.E.B	
8	SLS INC. 12/30/97	DSW	

STATE OF WEST VIRGINIA
 DODDRIDGE COUNTY
 Office of Assessor

WEST UNION DISTRICT
 SHEET 23

Date, Aerial Photography: APRIL, 1962 Date, Map: DEC. 1963
 Photo No: 240 Scale: 1"=400'

WERNER, A. & S. SMITH CO., P.O. PA. 11244-1122