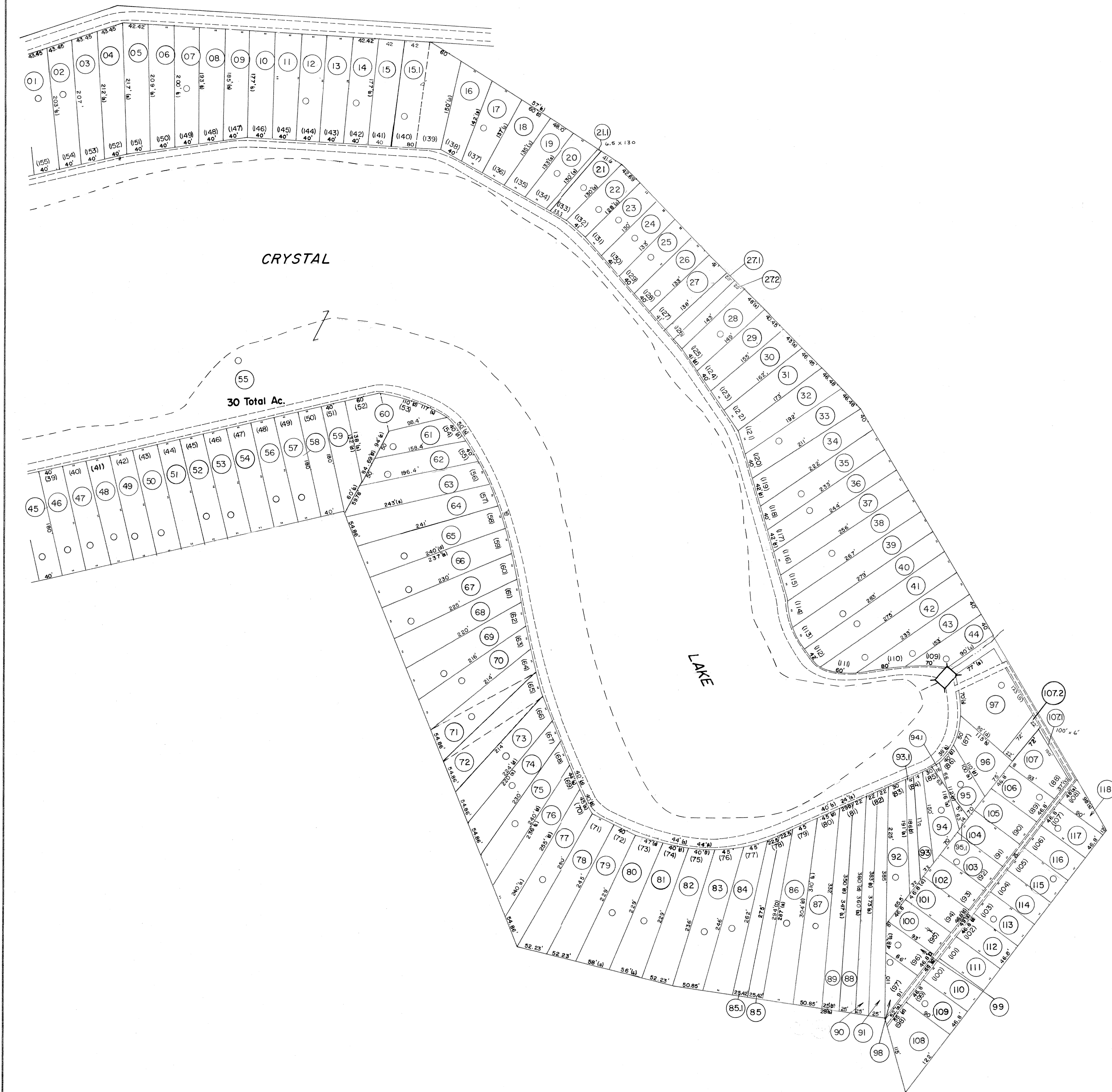


NOTE: SEE SHEET 4 FOR
ADJOINING PARCELS



NOTE: SEE SHEET 7 FOR
ADJOINING PARCELS

FOR TAX PURPOSES ONLY

Prepared by
L. ROBERT KIMBALL
Consulting Engineer
Ebensburg, Pennsylvania

Legend

Property line	Original lot line	(15)
Edge of pavement or roadway	Deed lot number in parentheses	(99)
Corporation line	Parcel or index number in circle	o
District line	Improvement	+
County line	Railroad	—+—+—

Revisions

1	REVISED 3/11/64	9	5/3/05	HAS	17
2	1/25/72	10	4/6/07	SAH	18
3	4-2-80	11			19
4	REVISED 7-81	12			20
5	REV. TO 7-1-85	13			21
6	7-1-86	14			22
7	Revised to 7-1-88	15			23
8	OGIS 2-95	16			24

STATE OF WEST VIRGINIA
DODDRIDGE COUNTY

Office of Assessor

WEST UNION DISTRICT
CRYSTAL LAKE
SHEET 30

Date, Aerial Photography: APRIL, 1962 Date, Map: DEC., 1962
Photo No: 216 Scale: 1" = 100'