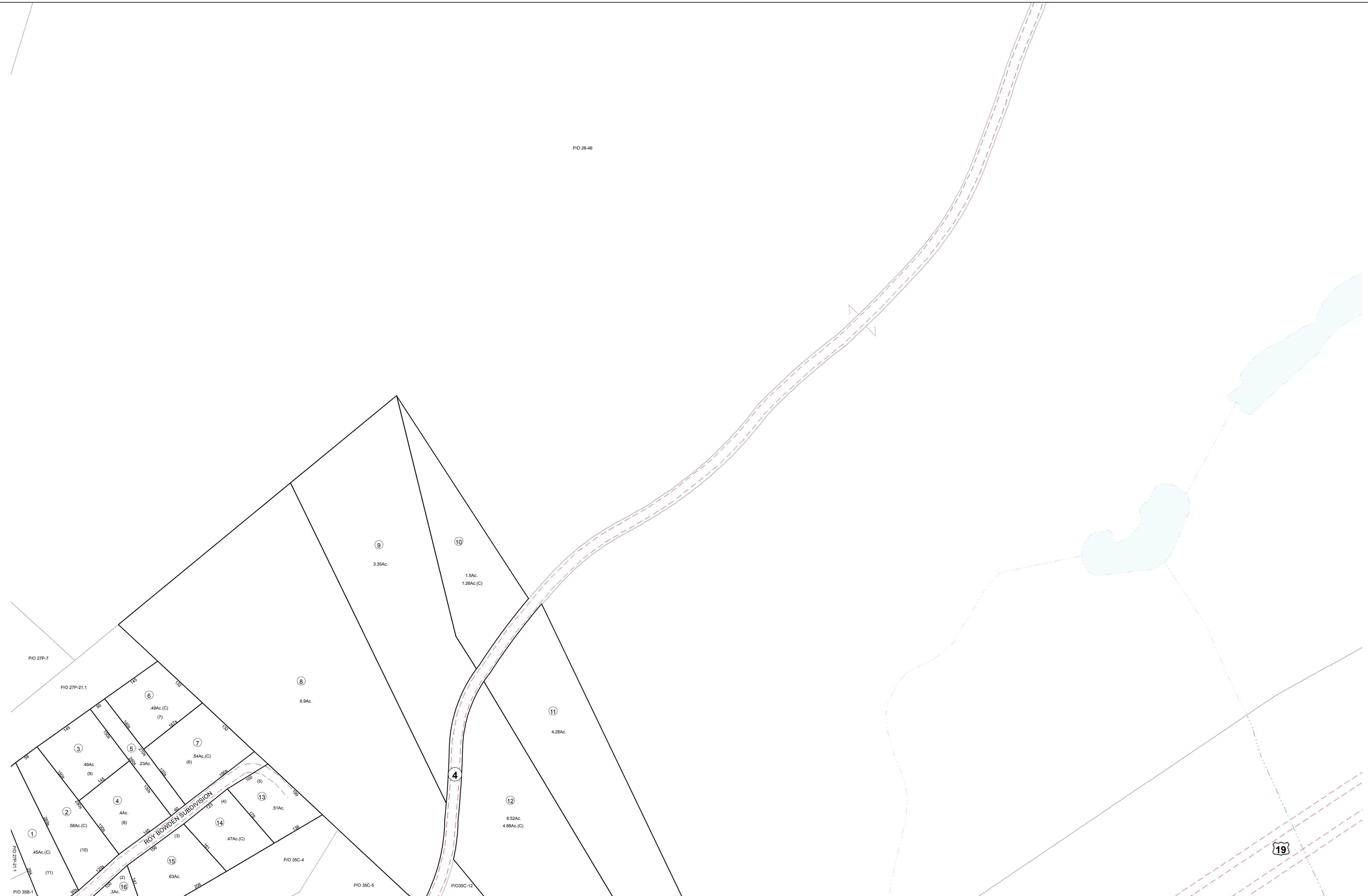


PIO 28-46



Prepared By
The Office Of The
Fayette County Assessor
100 Church Street
Fayetteville, WV 25840
FOR TAX PURPOSES ONLY

DISCLAIMER
This product is for tax purposes only and was not prepared for, nor is it suitable for, legal, engineering, or surveying purposes. Users of this information should review individual parcel records including deeds, survey maps or plats, and legal property descriptions for definitive parcel location information. This map is not a valid survey plat and the data on this map does not imply any official status to such data. The State of West Virginia and county assessor's office assume no liability that might result from the use of this map.

LEGEND

Property Line	—
Roadway	— — — — —
Water	~ ~ ~ ~ ~
District/Corporation Line	- - - - -
County Line	— — — — —
Land Hook	Z
Original Lot Line/Interior Tract	- - - - -

Deed Lot Number	(15)
Parcel or Index Number	15
Improvement	○
Railroad	— — — — —
Scaled Dimension	123s
Deeded Acreage	12.34Ac.
Calculated Area	12.34Ac.(C)

REVISIONS

NO.	DATE	DESCRIPTION

RESTRICTIONS

MAP KEY

01-27P	01-27R
01-35B	01-35C
01-35G	01-35H

STATE OF WEST VIRGINIA
FAYETTE COUNTY
FAYETTEVILLE, WEST VIRGINIA
Coordinate System: NAD 1983, WV State Plane South

NEW HAVEN DISTRICT
MAP 27R
Map Date: 12/16/2014
Scale: 1inch = 100 feet