

388000
1965000

386000
1965000

P/O 48H-21

P/O 48H-20

1.7Ac.
.63Ac.(C)

(32) .92Ac.(C)

1
8 Ac.

1.1
1.5Ac.
(FLOATER)

7

8

1.2
.38Ac.(C)

1.3
.38Ac.(C)

ASSESSED IN
FAYETTEVILLE CORPORATION

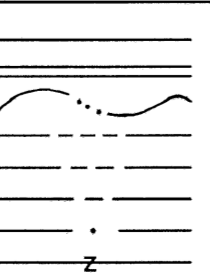
SEE MAP 48

TURNPIKE
GPK

MAP KEY

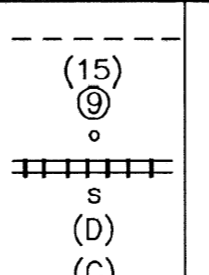
48	48H	49E
48	48M	49J
48	48S	49N

Property Line
Roadway
Water
Corporation Line
District Line
County Line
State Line
Land Hook



LEGEND

Original Lot Line or Interior Tract
Deed Lot Number
Parcel or Index Number
Improvement
Railroad
Scaled Dimension
Deeded Acreage
Calculated Area



RESTRICTIONS

All tax maps created under the provisions of reappraisal legislation are the property of the County of FAYETTE and the reproduction, copying, distribution or sale of such tax maps or any copies thereof without the written permission of the County Assessor is prohibited.

REVISIONS

PLOTTED 6/7/95	

FAYETTE COUNTY
STATE OF WEST VIRGINIA
FAYETTEVILLE, West Virginia

NEW HAVEN DISTRICT
MAP 48M
COMPUTER FILE 01-48M Date Map: 7/11/94 Scale: 1" = 100'