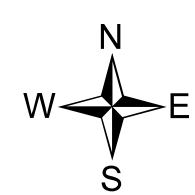
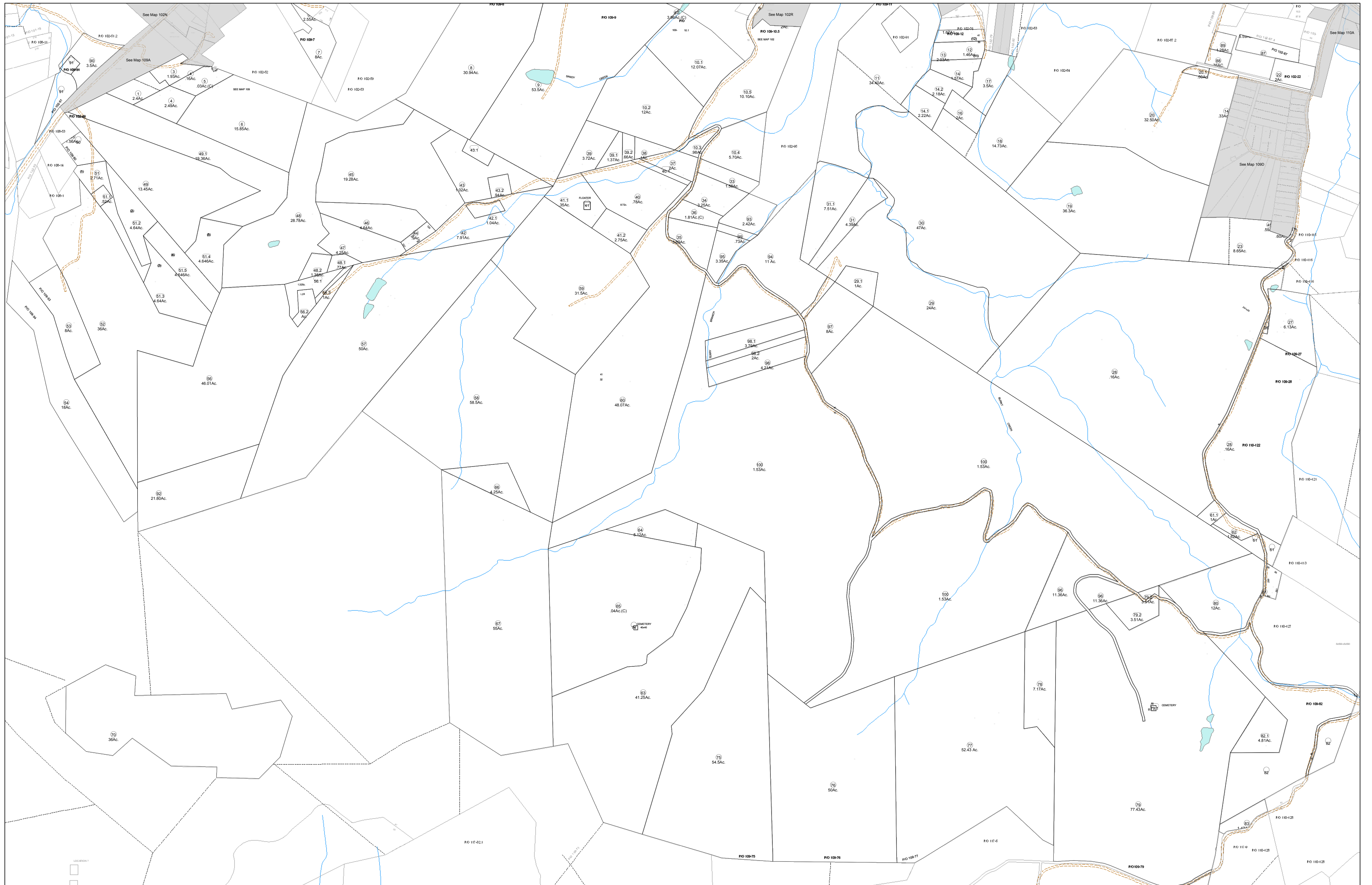


01-0109



FOR TAX PURPOSES ONLY

Prepared By:
Eddie Young
Fayette County Assessor

Legend	
Property Line	Original Lot Line
Edge of pavement or roadway	Deed lot number (in parenthesis)
Corporation line	Parcel or index number
District line	Improvement
County Line	Railroad

Restriction	
(15)	
(16)	
(17)	
(18)	
(19)	
(20)	

All tax maps created under the provisions of reappraisal legislation are the property of the Assessor of Fayette County, West Virginia and the reproduction, copying, modification, distribution sale or use of such tax maps or any copies thereof without the written permission of the Fayette County Assessor is prohibited by law.

101	102	103
108	109	110
116	117	118

FAYETTE COUNTY - WEST VIRGINIA
Office of Assessor

District: **New Haven**
Map No: **01-0109**
Drawn By: **Feb 23, 2007**
Scale: **1 inch equals 400 feet**