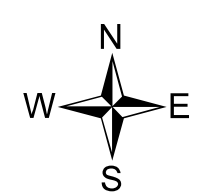
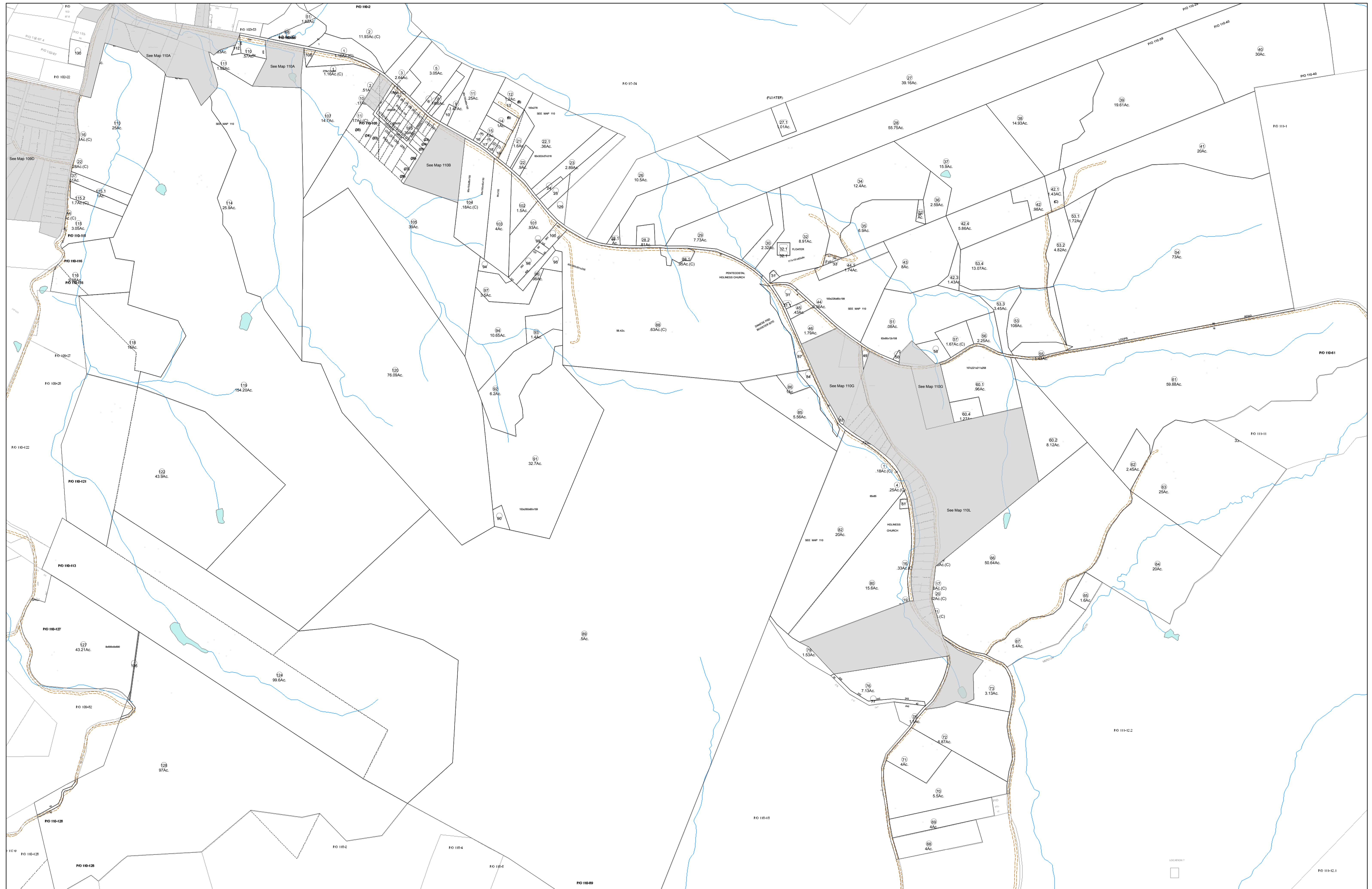


01-0110



**FOR TAX PURPOSES ONLY**

Prepared By:  
**Eddie Young**  
Fayette County Assessor

Legend		Restriction	
Property Line	—	Original Lot Line	—
Edge of pavement or roadway	—	Deed lot number (in parenthesis)	(15)
Corporation line	—	Parcel or index number	⓪
District line	—	Improvement	○
County Line	—	Railroad	—

102	103	104
109	110	111
117	118	119

**FAYETTE COUNTY - WEST VIRGINIA**  
Office of Assessor

District: **New Haven**  
Map No: **01-0110**  
Drawn By:  
Date: **Feb 23, 2007**  
Scale: **1 inch equals 400 feet**