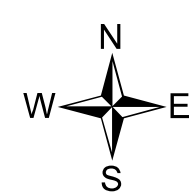
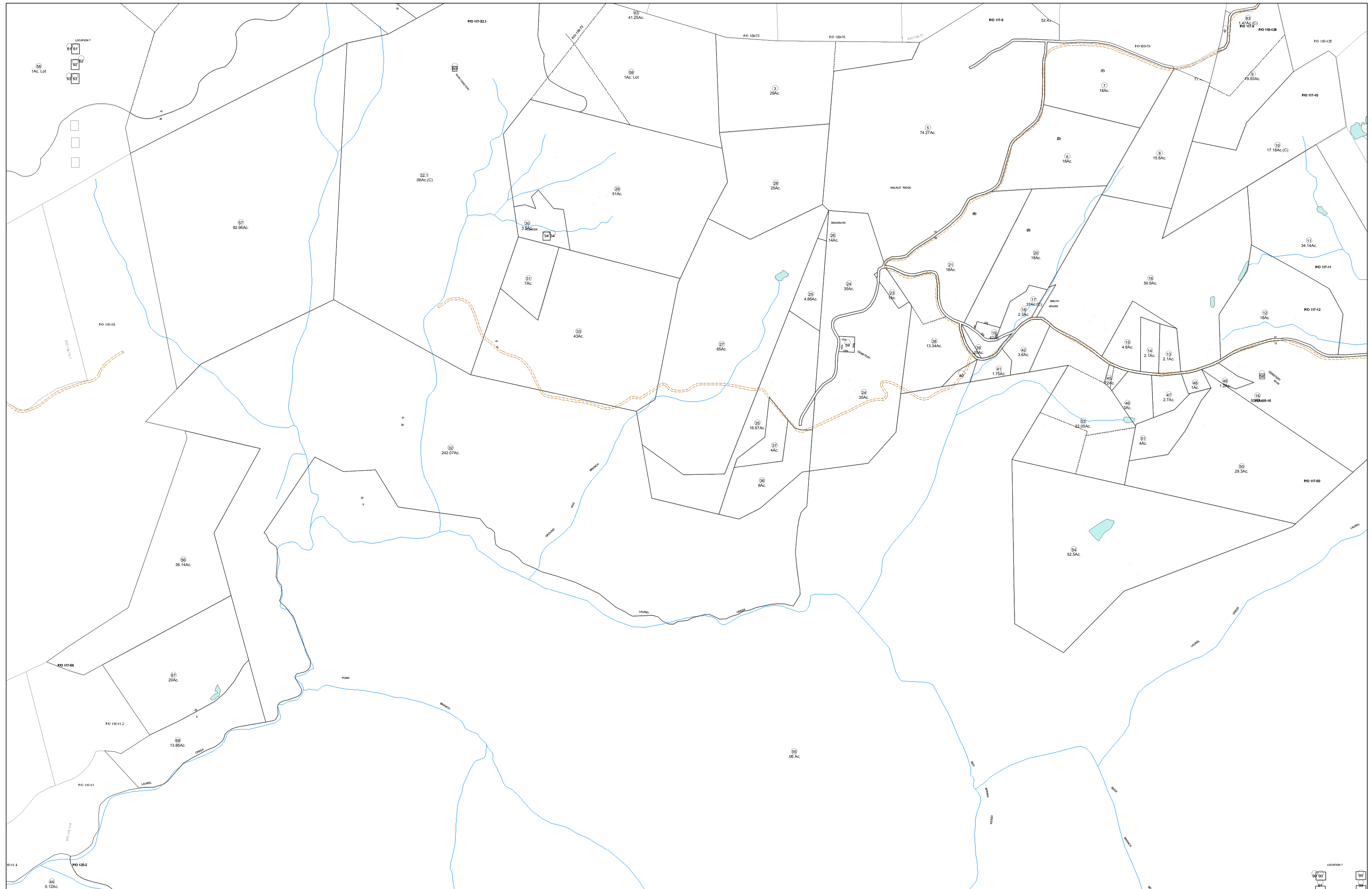


01-0117



**FOR TAX PURPOSES ONLY**

Prepared By:  
**Eddie Young**  
 Fayette County Assessor

Legend	
Property Line	—
Edge of pavement or roadway	- - - - -
Corporation line	— · — · —
District line	· · · · ·
County Line	- - - - -
Original Lot Line	—
Deed lot number (in parenthesis)	(15)
Parcel or index number	Ⓜ
Improvement	○
Railroad	—+—+—+—

**Restriction**

All tax maps created under the provisions of reappraisal legislation are the property of the Assessor of Fayette County, West Virginia and the reproduction, copying, modification, distribution sale of such tax maps or any copies thereof without the written permission of the Fayette County Assessor is prohibited by law.

108	109	110
116	117	118
125	126	127

**FAYETTE COUNTY - WEST VIRGINIA**  
 Office of Assessor

**District:** New Haven  
**Map No:** 01-0117  
**Drawn By:**  
**Date:** Feb 23, 2007  
**Scale:** 1 inch equals 400 feet