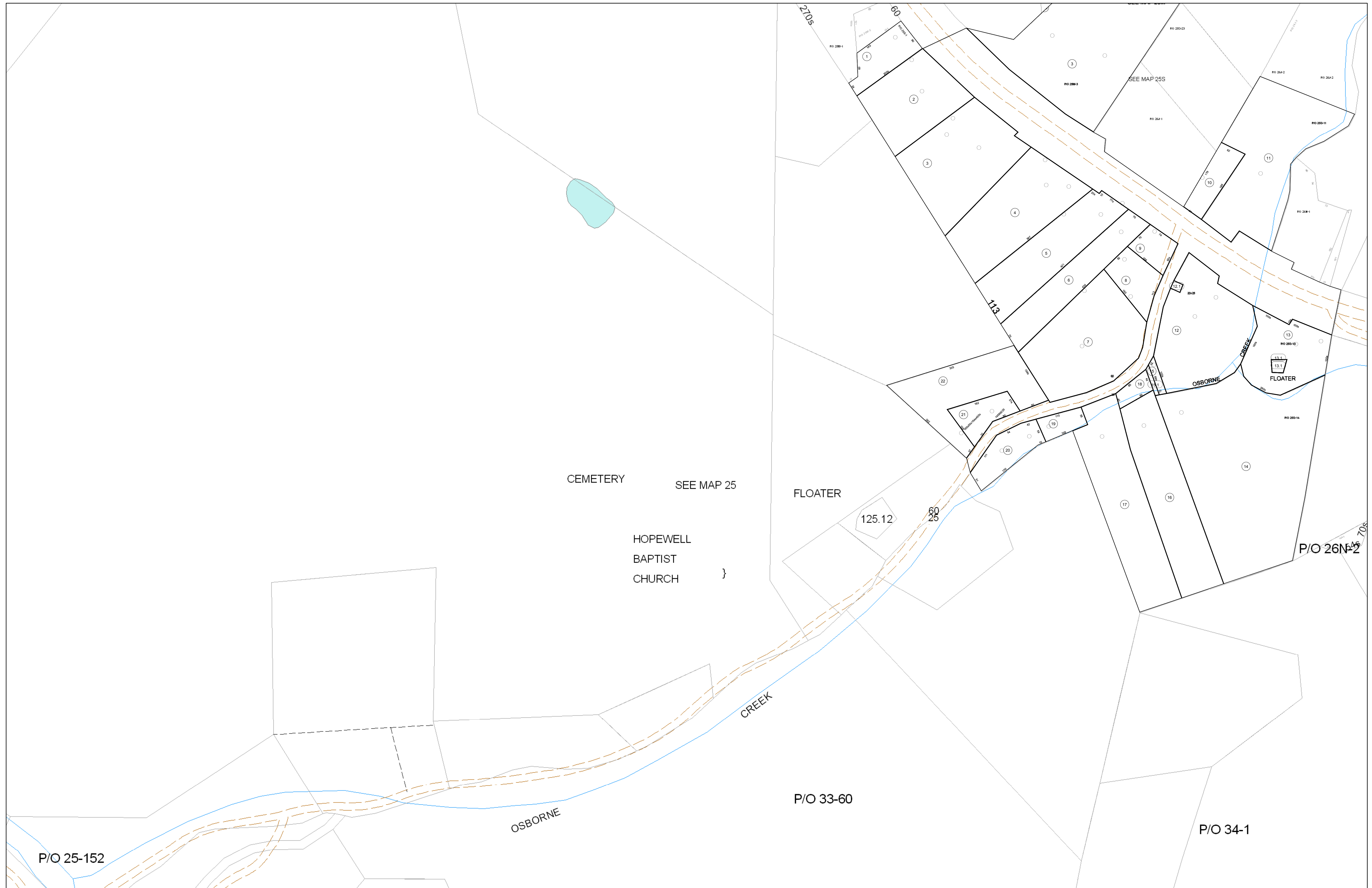
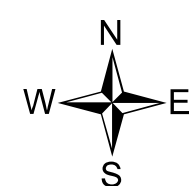


01-025S



FOR TAX PURPOSES ONLY

Prepared By:
Eddie Young
Fayette County Assessor



Legend

Property Line	—	Original Lot Line	—
Edge of pavement or roadway	- - - -	Deed lot number (in parenthesis)	(15)
Corporation line	· · · · ·	Parcel or index number	Ⓜ
District line	· · · · ·	Improvement	○
County Line	- - - -	Railroad	—+—

Restriction

All tax maps created under the provisions of reappraisal legislation are the property of the Assessor of Fayette County, West Virginia and the reproduction, copying, modification, distribution sale of such tax maps or any copies thereof without the written permission of the Fayette County Assessor is prohibited by law.

	8	9	10	25B
24	11	12	13	14
15	16	17	18	19
20	21	22	23	24
	25	26	27	28
32	33	34		
T 25B				

FAYETTE COUNTY - WEST VIRGINIA
Office of Assessor

District: **New Haven**
Map No: **01-025S**
Drawn By:
Date: **Feb 23, 2007**
Scale: **1 inch equals 100 feet**