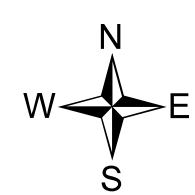
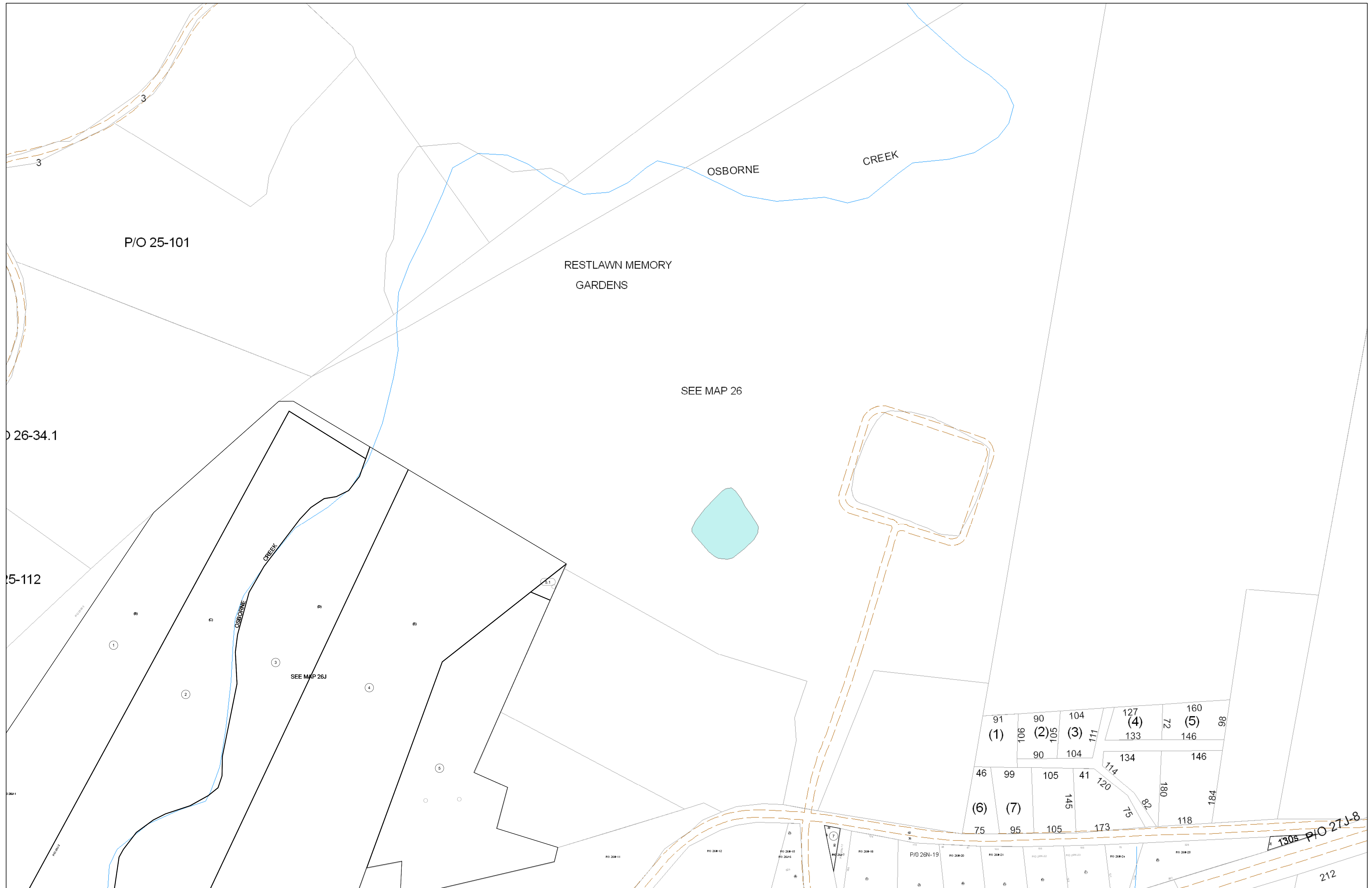


01-026J



FOR TAX PURPOSES ONLY

Prepared By:
Eddie Young
 Fayette County Assessor

Legend

Property Line	—
Edge of pavement or roadway	- - - - -
Corporation line	· · · · ·
District line	— · — · — ·
County Line	- - - - -

Original Lot Line	—
Deed lot number (in parenthesis)	(15)
Parcel or index number	Ⓜ
Improvement	○
Railroad	—+—+—+—

Restriction

All tax maps created under the provisions of reappraisal legislation are the property of the Assessor of Fayette County, West Virginia and the reproduction, copying, modification, distribution sale of such tax maps or any copies thereof without the written permission of the Fayette County Assessor is prohibited by law.

1	2	3	33	19
4	5	6	18	18P
8	9	10	26P	26R
11	13	14	25H	26F
17	18	19	25M	26K
22	25	25S	26N	26S
33				34

FAYETTE COUNTY - WEST VIRGINIA
 Office of Assessor

District: New Haven
Map No: 01-026J
Drawn By:
Date: Feb 23, 2007
Scale: 1 inch equals 100 feet