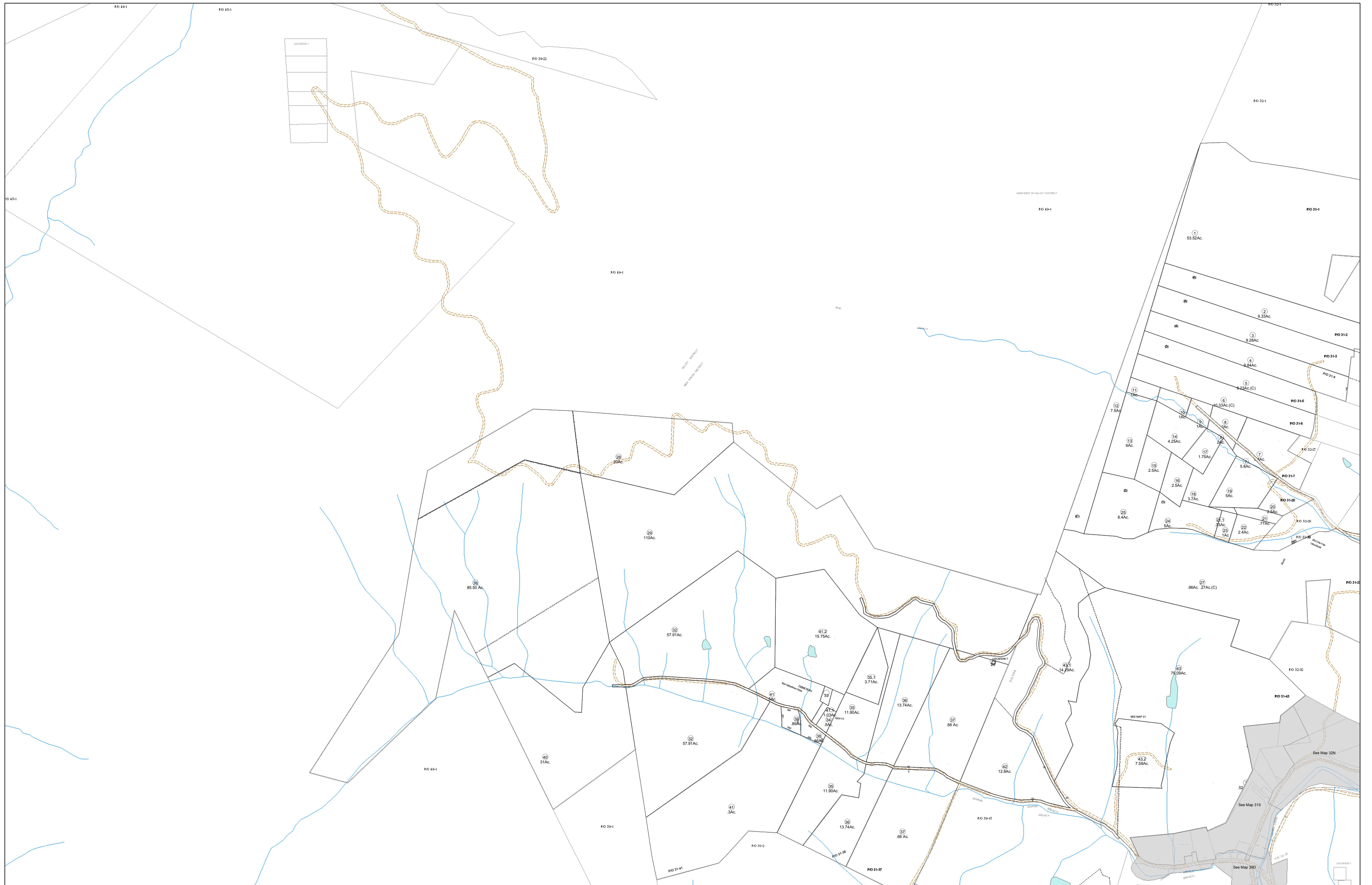


01-0031



FOR TAX PURPOSES ONLY
 Prepared By:
Eddie Young
 Fayette County Assessor

Legend	
Property Line	—
Edge of pavement or roadway	- - - - -
Corporation line	— · — · —
District line	- - - - -
County Line	- - - - -
Original Lot Line	— · — · —
Deed lot number (in parenthesis)	(15)
Parcel or index number	Ⓜ
Improvement	○
Railroad	— · — · —

Restriction	
38	39
44	32
49	40

FAYETTE COUNTY - WEST VIRGINIA
 Office of Assessor

District: **New Haven**
 Map No: **01-0031**
 Drawn By: **Feb 23, 2007**
 Date: **1 inch equals 400 feet**
 Scale: