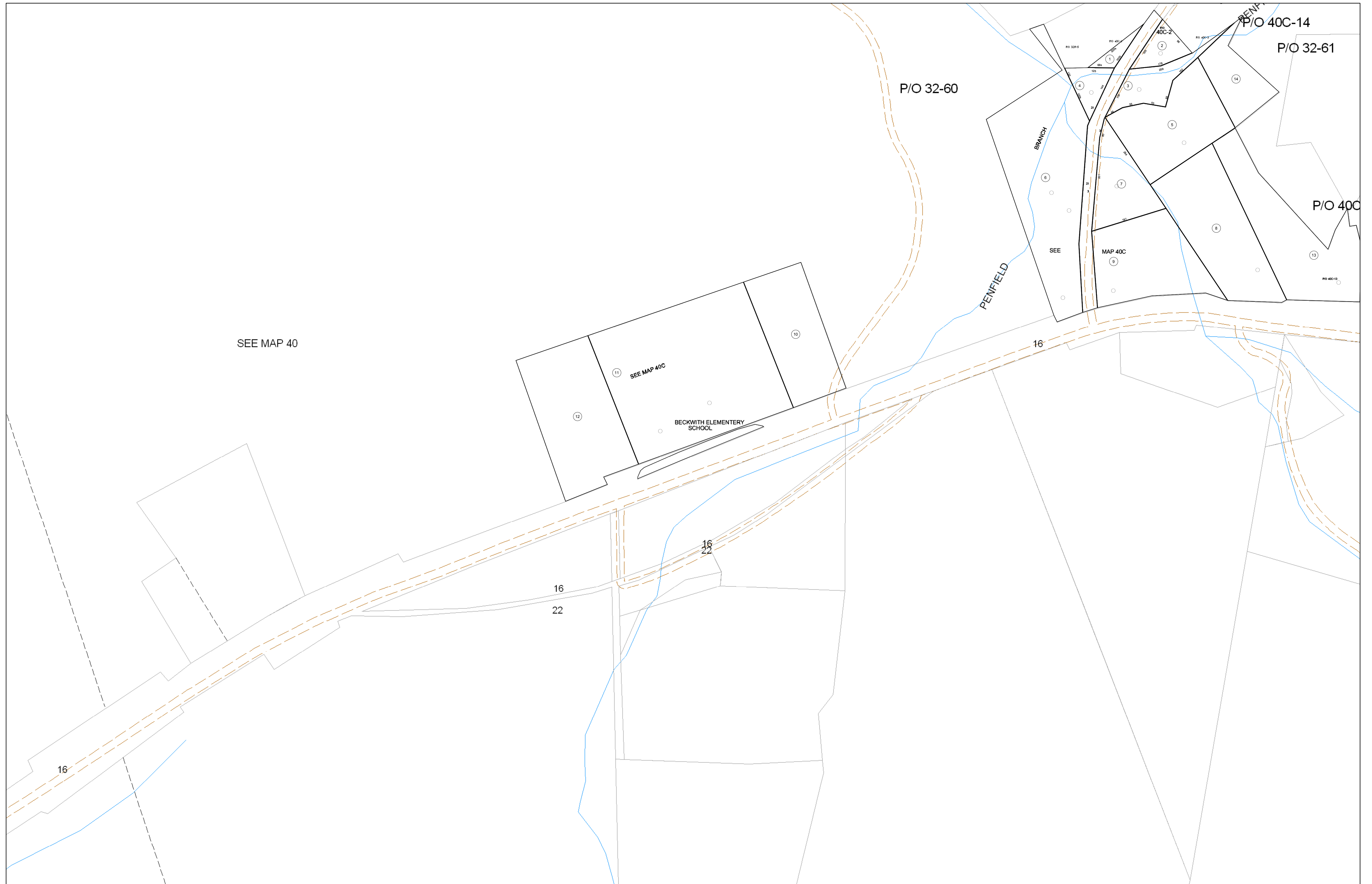


01-040C



SEE MAP 40

SEE MAP 40C

BECKWITH ELEMENTARY SCHOOL

PENFIELD

16

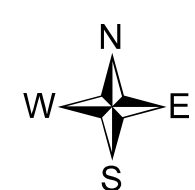
16

22

16

22

16



FOR TAX PURPOSES ONLY

Prepared By:
Eddie Young
 Fayette County Assessor

Legend

Property Line	—	Original Lot Line	—
Edge of pavement or roadway	- - - - -	Deed lot number (in parenthesis)	(15)
Corporation line	· · · · ·	Parcel or index number	Ⓜ
District line	· · · · ·	Improvement	○
County Line	· · · · ·	Railroad	—+—

Restriction

All tax maps created under the provisions of reappraisal legislation are the property of the Assessor of Fayette County, West Virginia and the reproduction, copying, modification, distribution sale or such tax maps or any copies thereof without the written permission of the Fayette County Assessor is prohibited by law.

31	32	33
31B	32B	33B
31C	32C	33C
31D	32D	33D
31E	32E	33E
31F	32F	33F
31G	32G	33G
31H	32H	33H
31I	32I	33I
31J	32J	33J
31K	32K	33K
31L	32L	33L
31M	32M	33M
31N	32N	33N
31O	32O	33O
31P	32P	33P
31Q	32Q	33Q
31R	32R	33R
31S	32S	33S
31T	32T	33T
31U	32U	33U
31V	32V	33V
31W	32W	33W
31X	32X	33X
31Y	32Y	33Y
31Z	32Z	33Z

FAYETTE COUNTY - WEST VIRGINIA
 Office of Assessor

District: **New Haven**
 Map No: **01-040C**
 Drawn By:
 Date: **Feb 23, 2007**
 Scale: **1 inch equals 100 feet**