

01-041M

SEE MAP 41

(A)

LOCATION ?

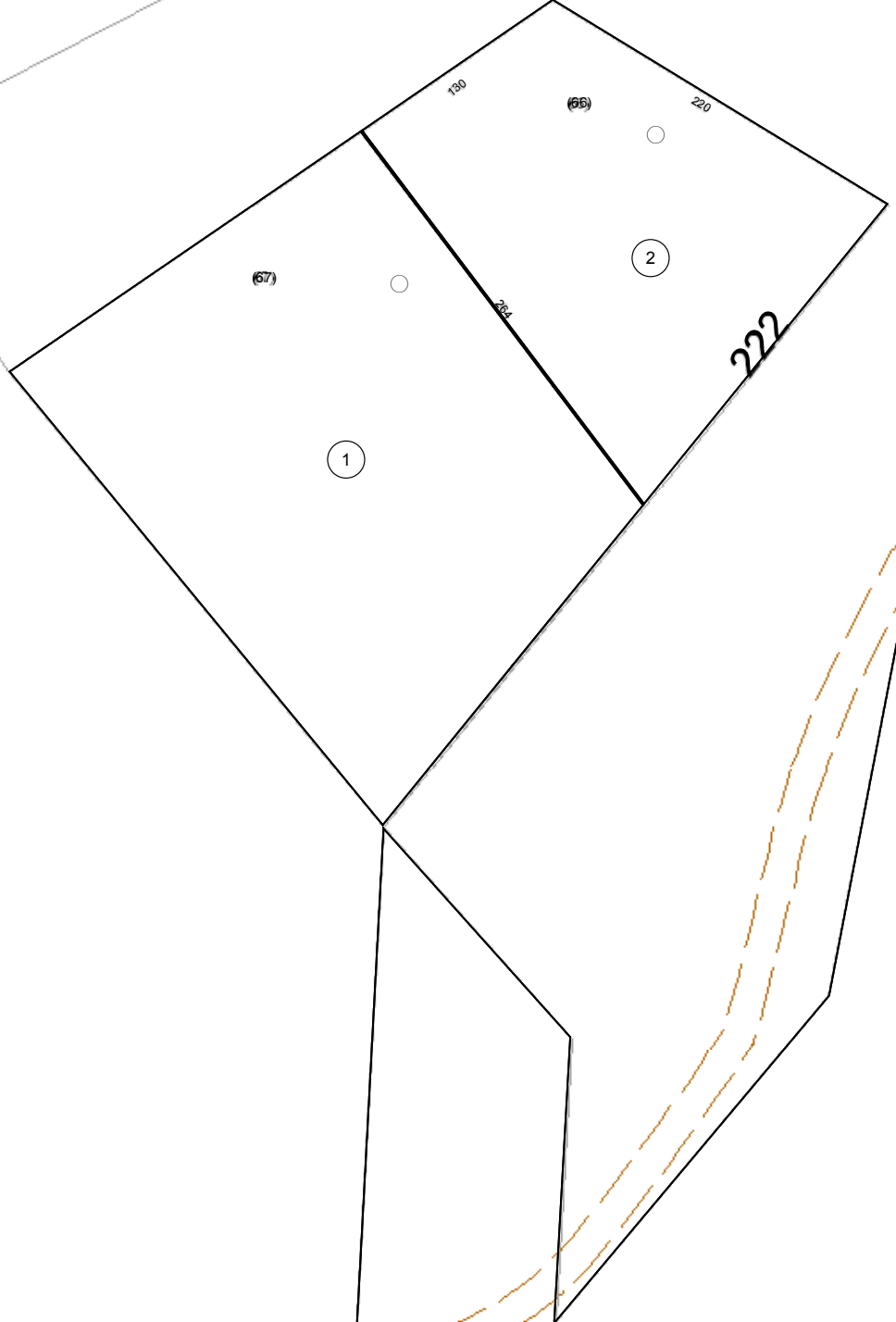
PT. LOT 42
AMES HEIGHTS

(C)

COVEDRIVE (ABANDONED)

CREEK
MILL

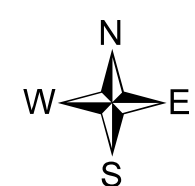
CREEK



P/O 42-29

P/O 41S-1

P/O 41M-84



FOR TAX PURPOSES ONLY

Prepared By:
Eddie Young
Fayette County Assessor

Legend

Property Line	Original Lot Line	(15)
Edge of pavement or roadway	Deed lot number (in parenthesis)	(15)
Corporation line	Parcel or index number	(15)
District line	Improvement	(15)
County Line	Railroad	(15)

Restriction

All tax maps created under the provisions of reappraisal legislation are the property of the Assessor of Fayette County, West Virginia and the reproduction, copying, modification, distribution sale or use of such tax maps or any copies thereof without the written permission of the Fayette County Assessor is prohibited by law.



FAYETTE COUNTY - WEST VIRGINIA
Office of Assessor

District: New Haven
Map No: 01-041M
Drawn By:
Date: Feb 23, 2007
Scale: 1 inch equals 100 feet