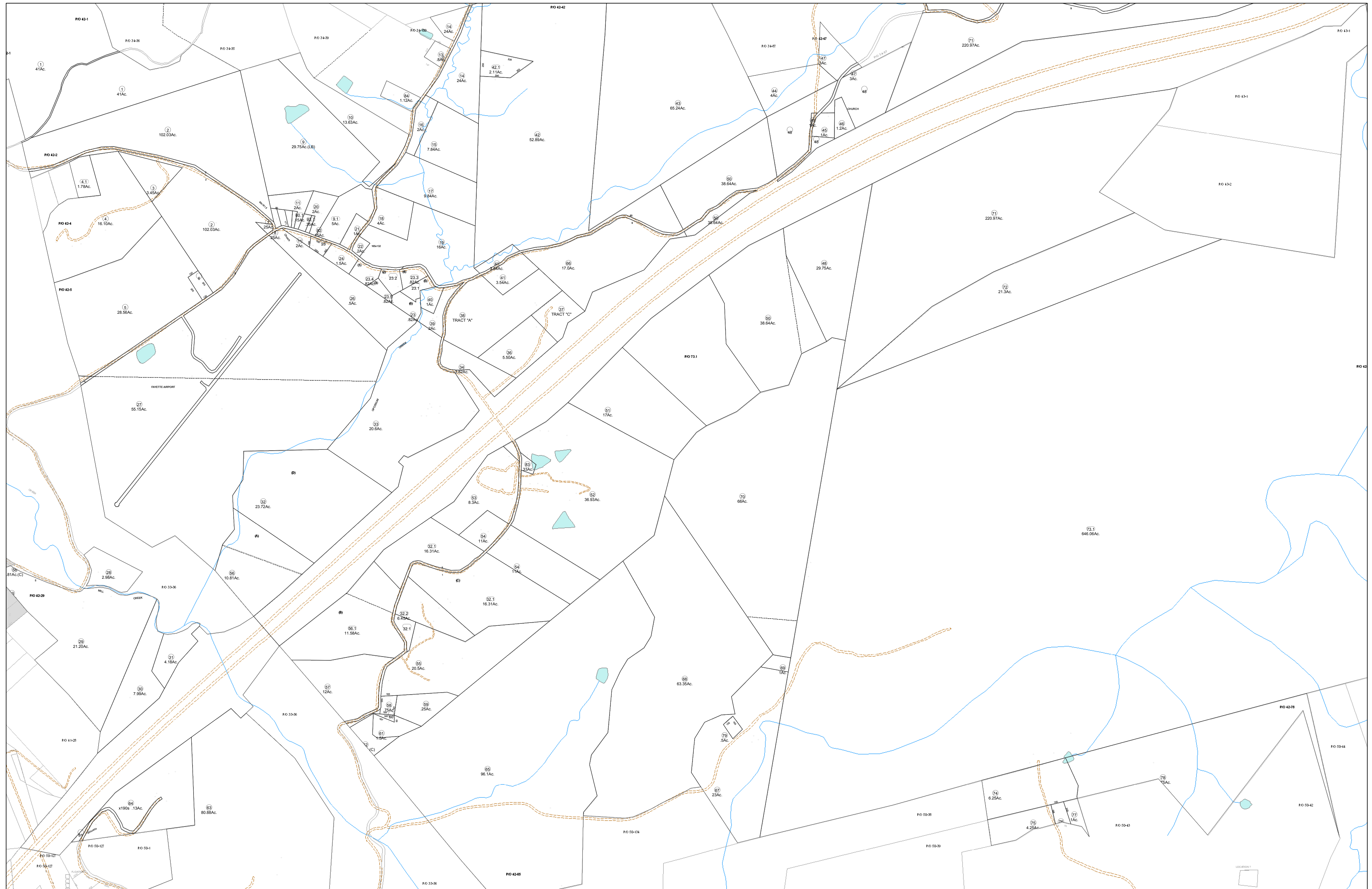


01-0042



FOR TAX PURPOSES ONLY
 Prepared By:
Eddie Young
 Fayette County Assessor

Legend	
Property Line	Original Lot Line
Edge of pavement or roadway	Deed lot number (in parenthesis)
Corporation line	Parcel or index number
District line	Improvement
County Line	Railroad

(15)
⊙
⊙

Restriction
 All tax maps created under the provisions of reappraisal legislation are the property of the Assessor of Fayette County, West Virginia and the reproduction, copying, modification, distribution sale of such tax maps or any copies thereof without the written permission of the Fayette County Assessor is prohibited by law.

33	34	35
41		43
50E 50A		51
50J 50		

FAYETTE COUNTY - WEST VIRGINIA
 Office of Assessor

District: New Haven
Map No: 01-0042
Drawn By:
Date: Feb 23, 2007
Scale: 1 inch equals 400 feet