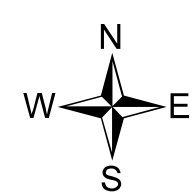
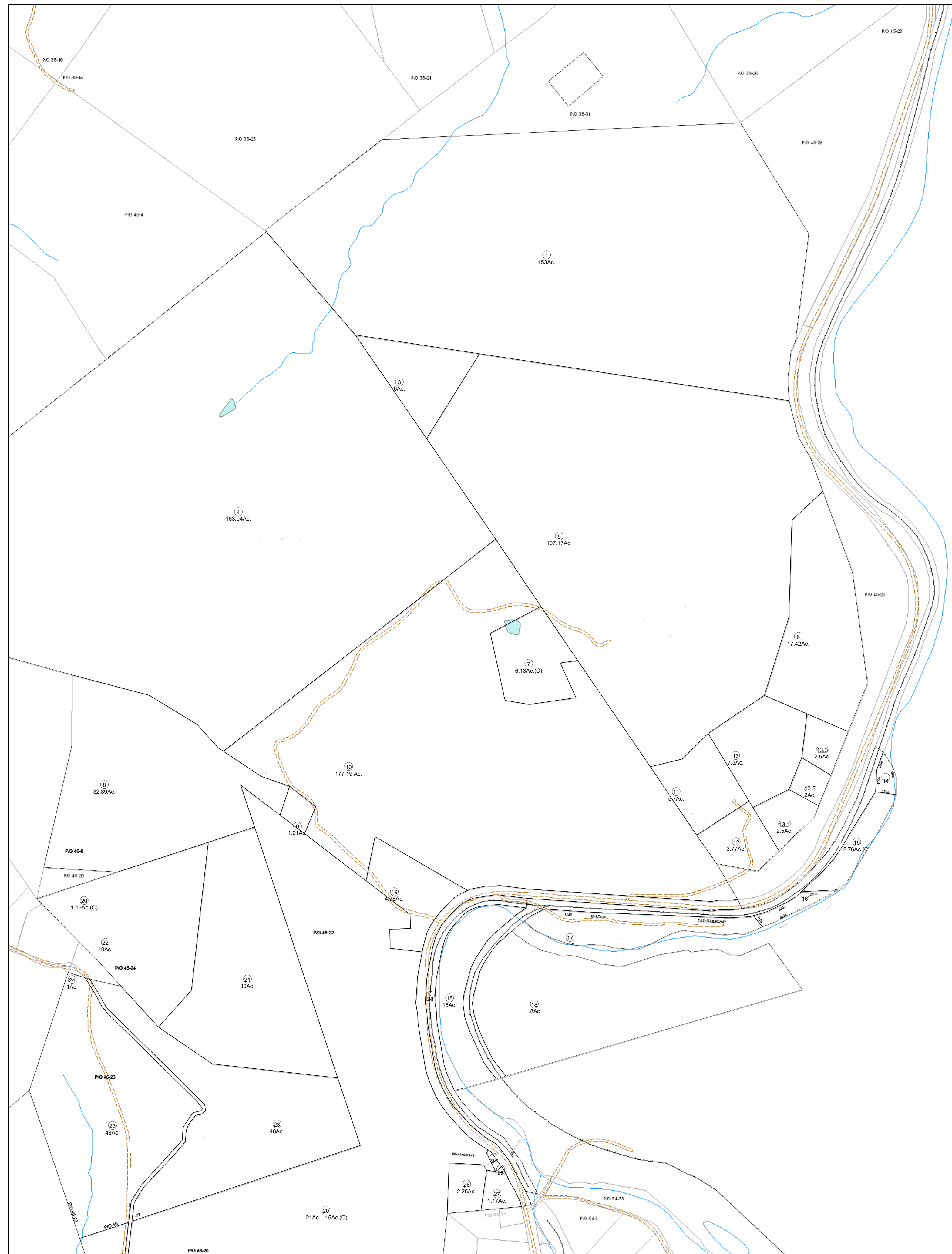


01-0046



FOR TAX PURPOSES ONLY

Prepared By:
Eddie Young
Fayette County Assessor

Legend		Restriction	
Property Line	—————	Original Lot Line	—————
Edge of pavement or roadway	- - - - -	Deed lot number (in parenthesis)	(15)
Corporation line	Parcel or index number	Ⓜ
District line	Improvement	○
County Line	Railroad	—————

All tax maps created under the provisions of reappraisal legislation are the property of the Assessor of Fayette County, West Virginia and the reproduction, copying, modification, distribution sale of such tax maps or any copies thereof without the written permission of the Fayette County Assessor is prohibited by law.

36	37	38
44	45	46
53	54	55

FAYETTE COUNTY - WEST VIRGINIA
Office of Assessor

District: **New Haven**
Map No: **01-0046**
Date: **Feb 23, 2007**
Scale: **1 inch equals 400 feet**