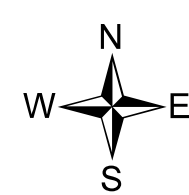
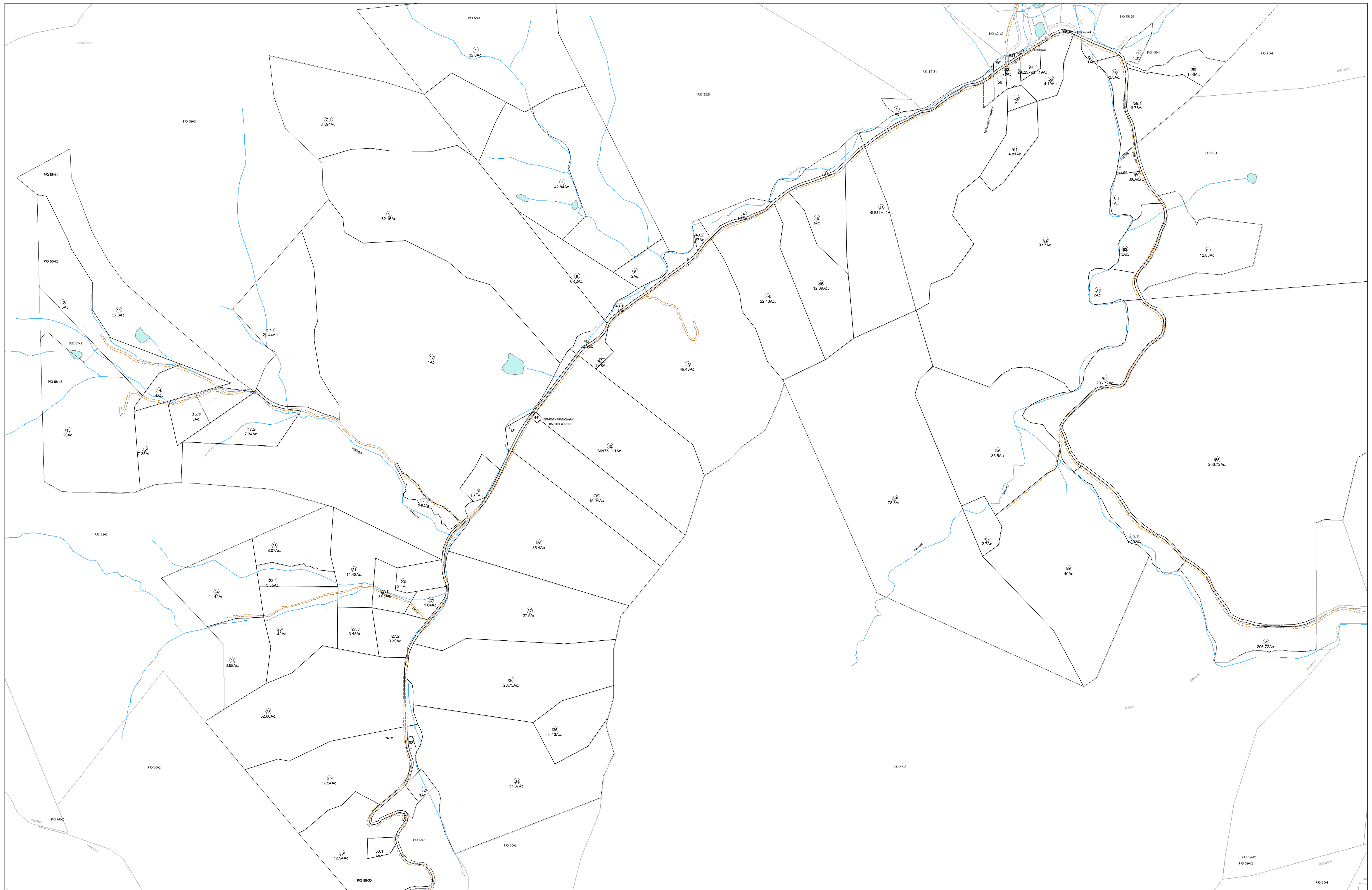


01-0058



FOR TAX PURPOSES ONLY

Prepared By:
Eddie Young
 Fayette County Assessor

Legend	
Property Line	—
Edge of pavement or roadway	- - - - -
Corporation line	— · — · —
District line	- · - · -
County Line	- - - - -
Original Lot Line	— · — · —
Deed lot number (in parenthesis)	(15)
Parcel or index number	⓪
Improvement	⓪
Railroad	— + — + —

Restriction	
54	47
57	59
65	68
69	69

All tax maps created under the provisions of reappraisal legislation are the property of the Assessor of Fayette County, West Virginia and the reproduction, copying, modification, distribution sale of such tax maps or any copies thereof without the written permission of the Fayette County Assessor is prohibited by law.

FAYETTE COUNTY - WEST VIRGINIA
 Office of Assessor

District: **New Haven**
 Map No: **01-0058**
 Drawn By: **Feb 23, 2007**
 Date: **1 inch equals 400 feet**
 Scale: