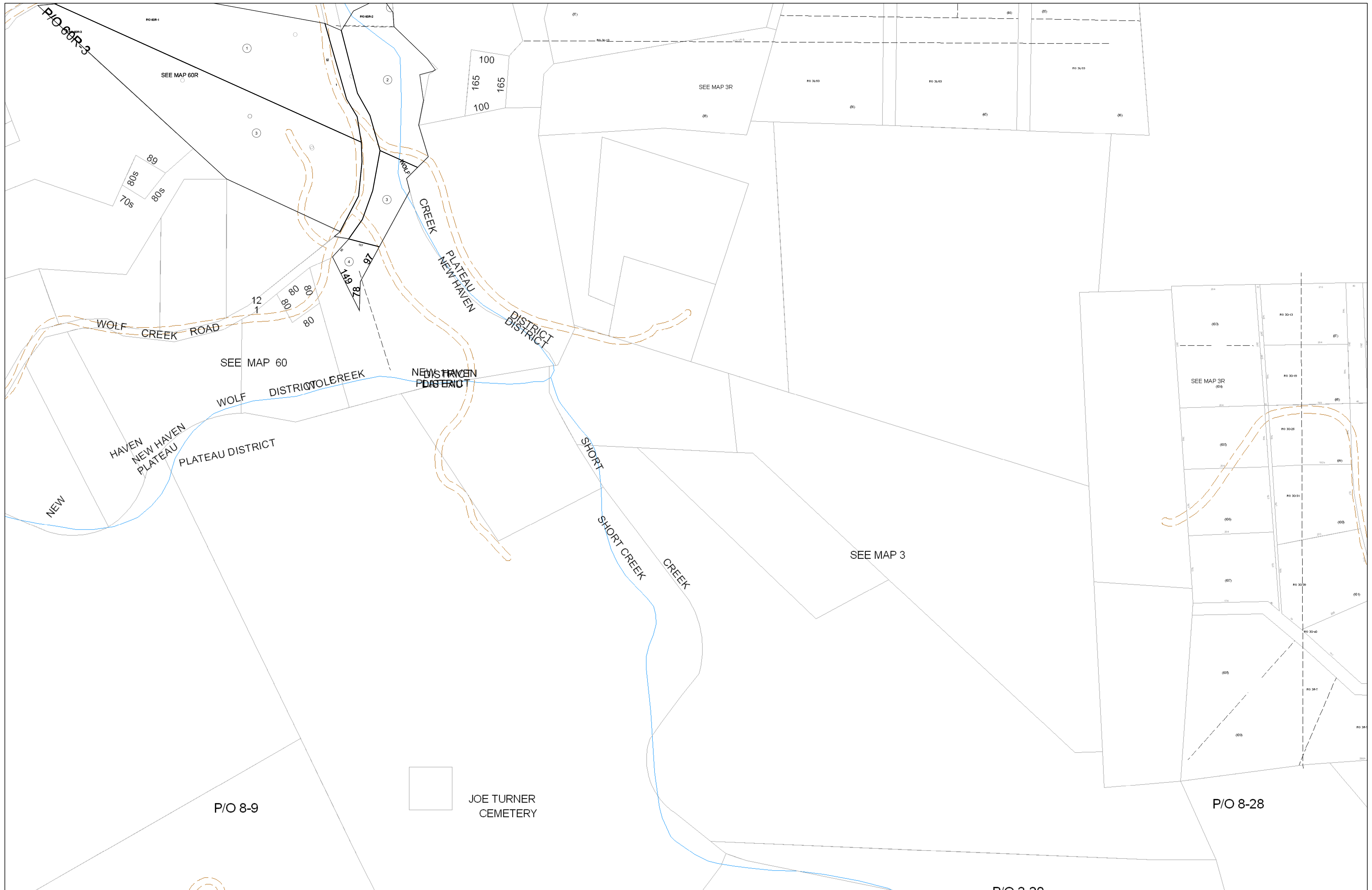


01-060R



**FOR TAX PURPOSES ONLY**  
 Prepared By:  
**Eddie Young**  
 Fayette County Assessor

Legend	
Property Line	Original Lot Line
Edge of pavement or roadway	Deed lot number (in parenthesis)
Corporation line	Parcel or index number
District line	Improvement
County Line	Railroad

Restriction	
(15)	
Ⓢ	
○	

FAYETTE COUNTY - WEST VIRGINIA  
 Office of Assessor

District: **New Haven**  
 Map No: **01-060R**  
 Drawn By:  
 Date: **Feb 23, 2007**  
 Scale: **1 inch equals 100 feet**