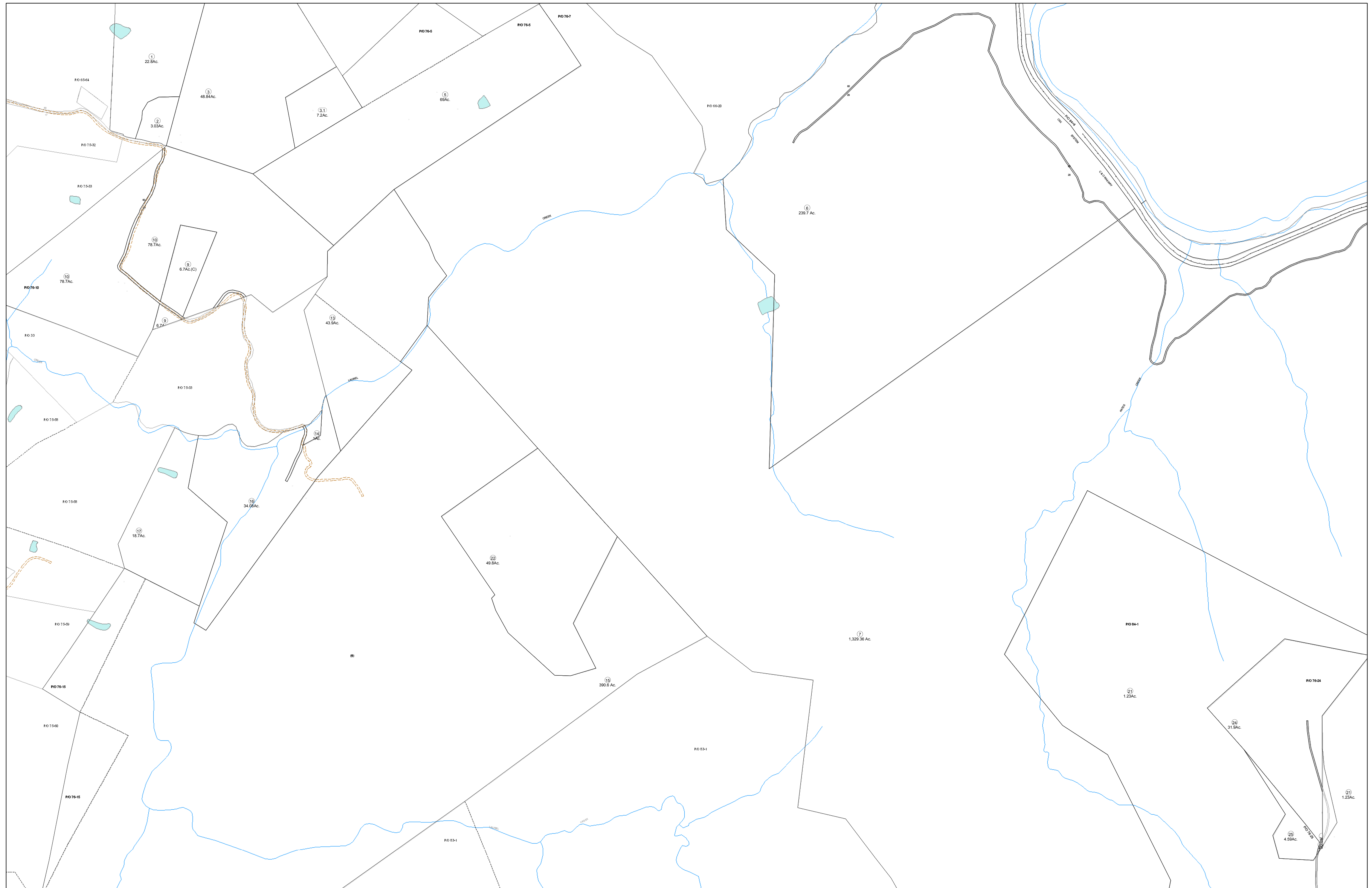


01-0076



FOR TAX PURPOSES ONLY
 Prepared By:
Eddie Young
 Fayette County Assessor

Legend
 Property Line
 Edge of pavement or roadway
 Corporation line
 District line
 County Line

Legend
 Original Lot Line
 Deed lot number (in parenthesis)
 Parcel or index number
 Improvement
 Railroad

Restriction
 All tax maps created under the provisions of reappraisal legislation are the property of the Assessor of Fayette County, West Virginia and the reproduction, copying, modification, distribution sale of such tax maps or any copies thereof without the written permission of the Fayette County Assessor is prohibited by law.

65	66	
75		77
82	83	84

FAYETTE COUNTY - WEST VIRGINIA
 Office of Assessor

District: New Haven
Map No: 01-0076
Drawn By:
Date: Feb 23, 2007
Scale: 1 inch equals 400 feet