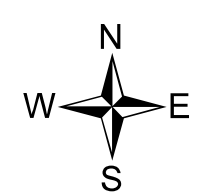
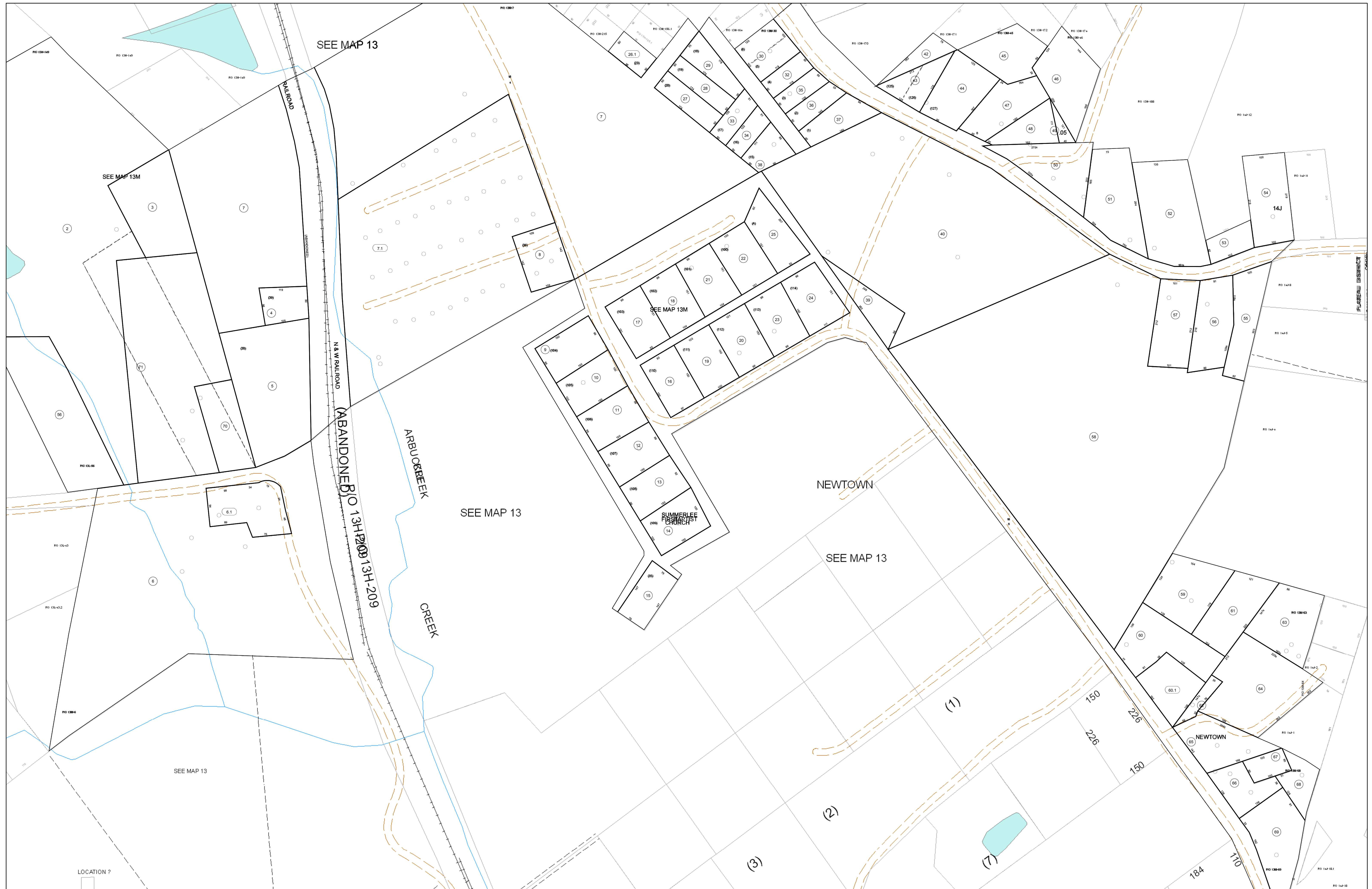


02-013M



FOR TAX PURPOSES ONLY
 Prepared By:
Eddie Young
 Fayette County Assessor

Legend	
Property Line	—
Edge of pavement or roadway	- - - - -
Corporation line	- · - · - · -
District line	- - - - -
County Line	- - - - -
Original Lot Line	—
Deed lot number (in parenthesis)	(15)
Parcel or index number	Ⓢ
Improvement	○
Railroad	- · - · - · -

Restriction

All tax maps created under the provisions of reappraisal legislation are the property of the Assessor of Fayette County, West Virginia and the reproduction, copying, modification, distribution sale or use of such tax maps or any copies thereof without the written permission of the Fayette County Assessor is prohibited by law.

68	6	69 69M	34
13	13C	13M	14
133	135	136	141
41	138	135	11
14	15	16	17
21	22	23	24

FAYETTE COUNTY - WEST VIRGINIA
 Office of Assessor

District: Plateau
 Map No: 02-013M
 Drawn By: Feb 23, 2007
 Date: 1 inch equals 100 feet
 Scale: