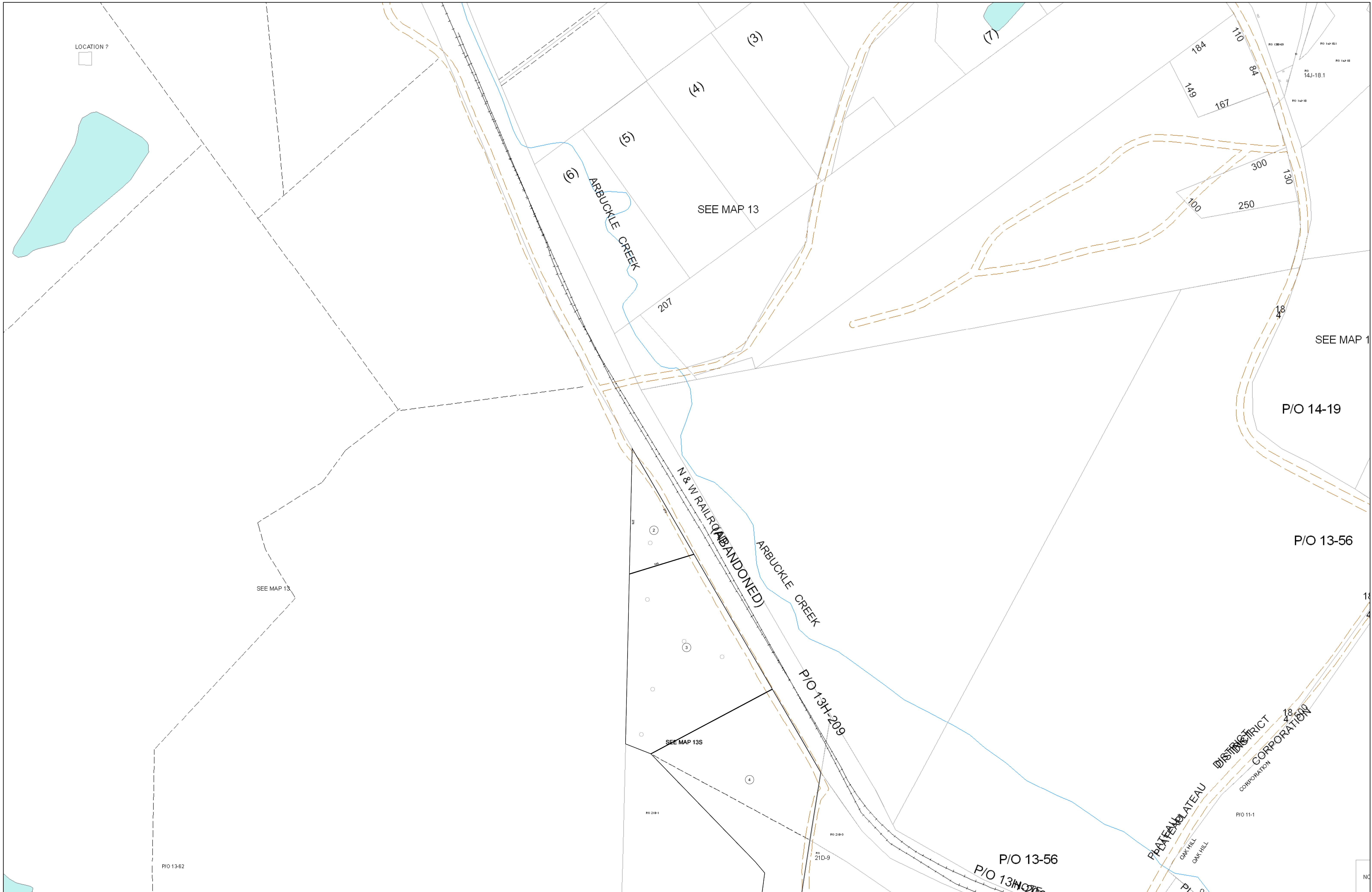


02-013S

LOCATION ?



**FOR TAX PURPOSES ONLY**  
Prepared By:  
**Eddie Young**  
Fayette County Assessor

Legend	
Property Line	—
Edge of pavement or roadway	- - - - -
Corporation line	· · · · ·
District line	- · - · -
County Line	- - - - -
Original Lot Line	—
Deed lot number (in parenthesis)	(15)
Parcel or index number	Ⓜ
Improvement	○
Railroad	—+—+—+—

**Restriction**

All tax maps created under the provisions of reappraisal legislation are the property of the Assessor of Fayette County, West Virginia and the reproduction, copying, modification, distribution sale of such tax maps or any copies thereof without the written permission of the Fayette County Assessor is prohibited by law.

13	14	15	16	17	18	19	20	21
13	14	15	16	17	18	19	20	21
13	14	15	16	17	18	19	20	21
13	14	15	16	17	18	19	20	21
13	14	15	16	17	18	19	20	21

FAYETTE COUNTY - WEST VIRGINIA  
Office of Assessor

District: Plateau  
Map No: 02-013S  
Drawn By: Eddie Young  
Date: Feb 23, 2007  
Scale: 1 inch equals 100 feet