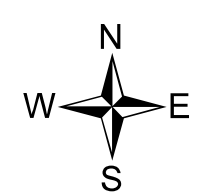
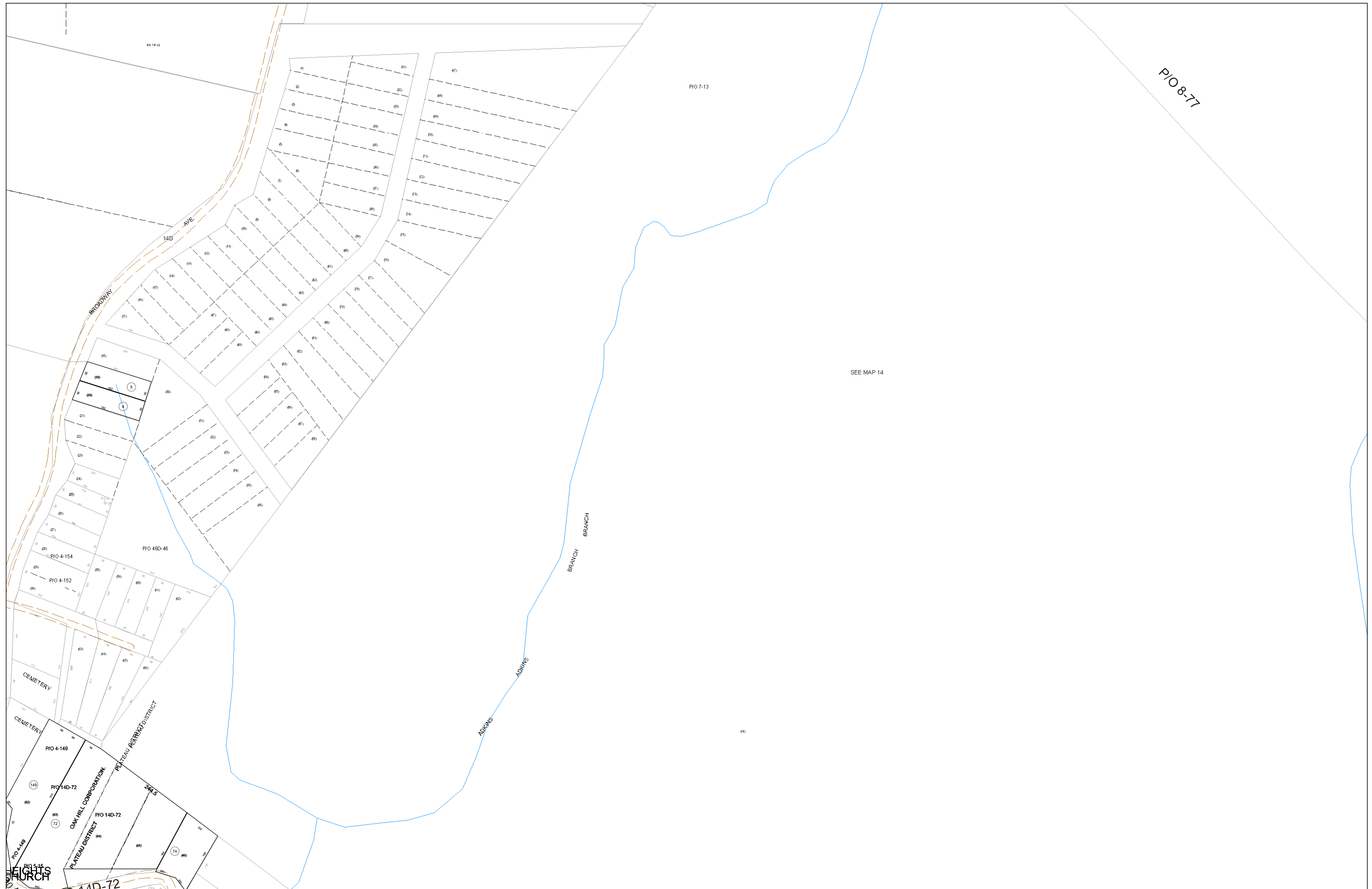


02-014D

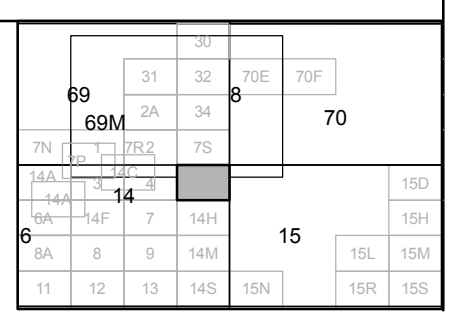


FOR TAX PURPOSES ONLY
 Prepared By:
Eddie Young
 Fayette County Assessor

Legend	
Property Line	—
Edge of pavement or roadway	- - - - -
Corporation line	· · · · ·
District line	· · · · ·
County Line	· · · · ·
Original Lot Line	—
Deed lot number (in parenthesis)	(15)
Parcel or index number	Ⓢ
Improvement	Ⓞ
Railroad	—+—+—+—

Restriction	

All tax maps created under the provisions of reappraisal legislation are the property of the Assessor of Fayette County, West Virginia and the reproduction, copying, modification, distribution sale of such tax maps or any copies thereof without the written permission of the Fayette County Assessor is prohibited by law.



FAYETTE COUNTY - WEST VIRGINIA
 Office of Assessor

District: Plateau
Map No: 02-014D
Drawn By:
Date: Feb 23, 2007
Scale: 1 inch equals 100 feet