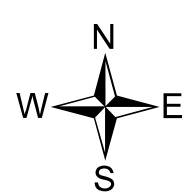
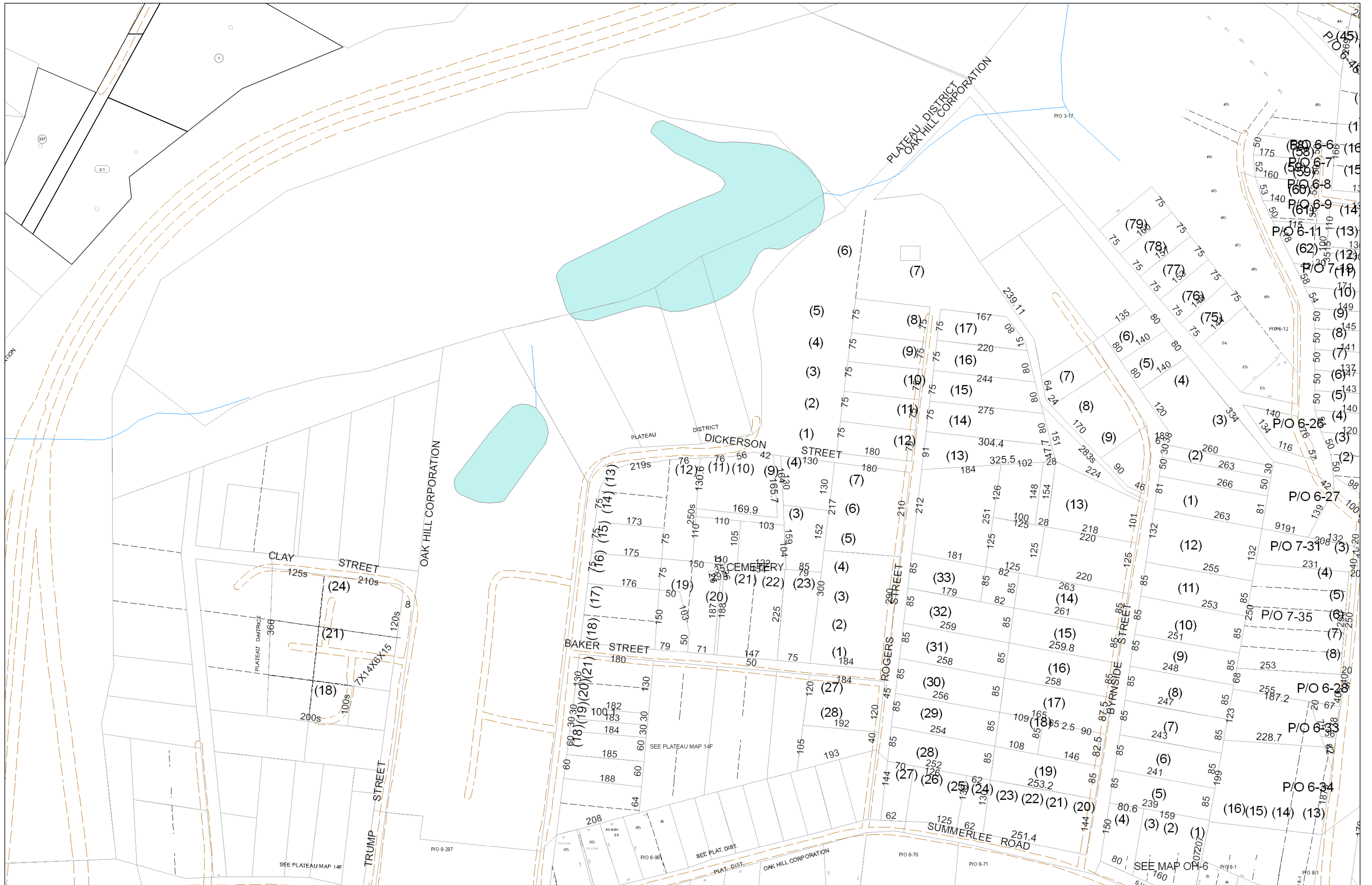


02-014F

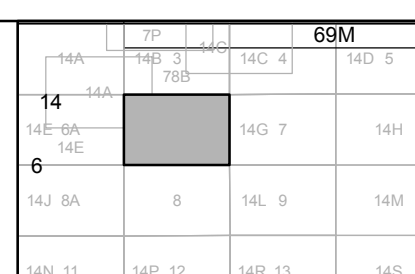


FOR TAX PURPOSES ONLY

Prepared By:
Eddie Young
Fayette County Assessor

Legend	
Property Line	Original Lot Line
Edge of pavement or roadway	Deed lot number (in parenthesis)
Corporation line	Parcel or index number
District line	Improvement
County Line	Railroad

Restriction	
(15)	SEE PLATEAU MAP 14F
Ⓢ	SEE PLAT. DIST.
Ⓞ	SEE MAP OR-6
Ⓛ	SEE PLAT. DIST.



FAYETTE COUNTY - WEST VIRGINIA
Office of Assessor

District: Plateau
Map No: 02-014F
Drawn By:
Date: Feb 23, 2007
Scale: 1 inch equals 100 feet