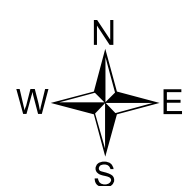
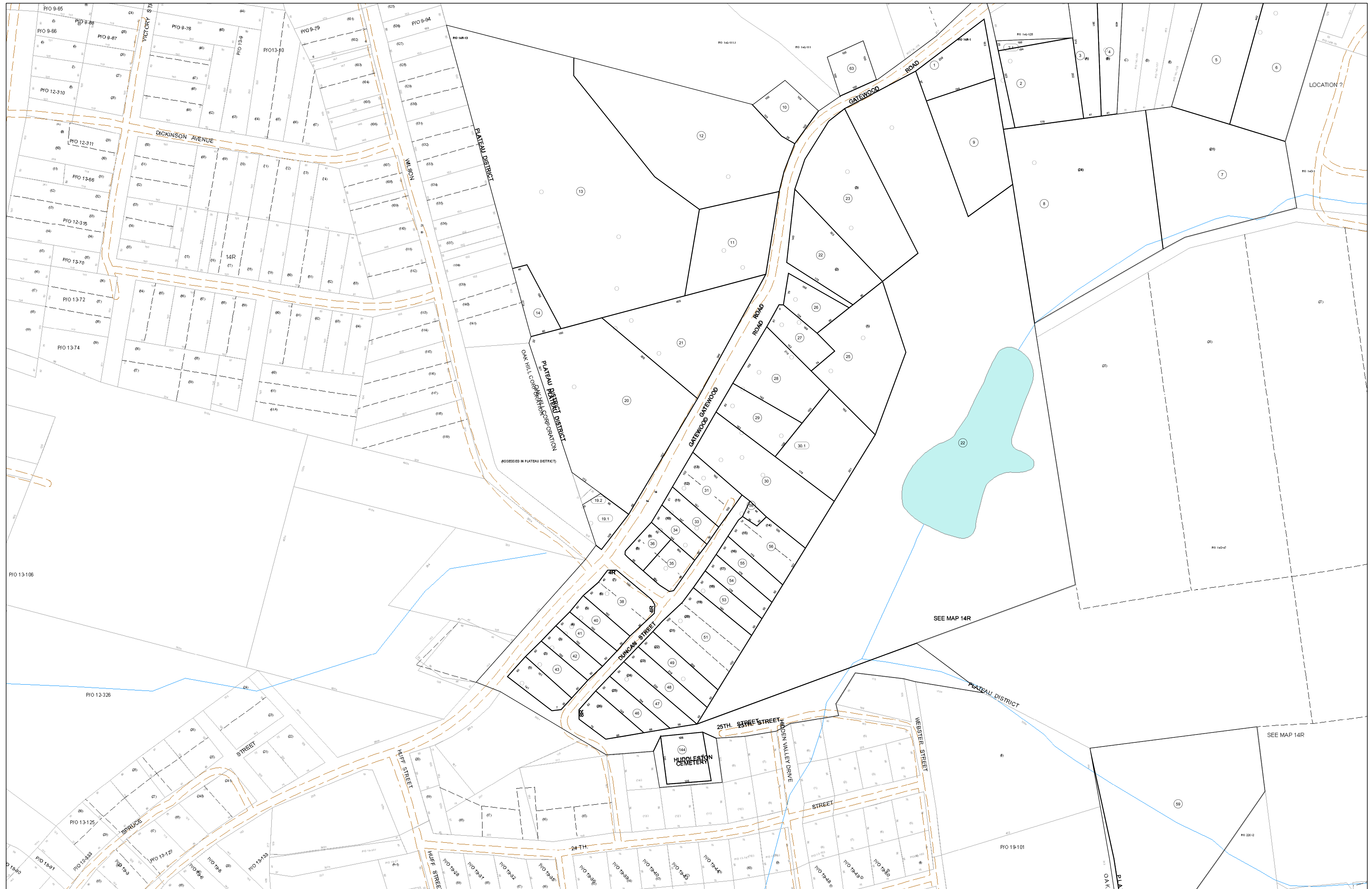


02-014R



FOR TAX PURPOSES ONLY

Prepared By:
Eddie Young
Fayette County Assessor

Legend

Property Line	Original Lot Line	Restriction
Edge of pavement or roadway	Deed lot number (in parenthesis)	
Corporation line	Parcel or index number	
District line	Improvement	
County Line	Railroad	

All tax maps created under the provisions of reappraisal legislation are the property of the Assessor of Fayette County, West Virginia and the reproduction, copying, modification, distribution sale of such tax maps or any copies thereof without the written permission of the Fayette County Assessor is prohibited by law.

13	14	15
16	17	18
19	20	21
22	23	24
25	26	27

FAYETTE COUNTY - WEST VIRGINIA
Office of Assessor

District: Plateau
Map No: 02-014R
Drawn By:
Date: Feb 23, 2007
Scale: 1 inch equals 100 feet