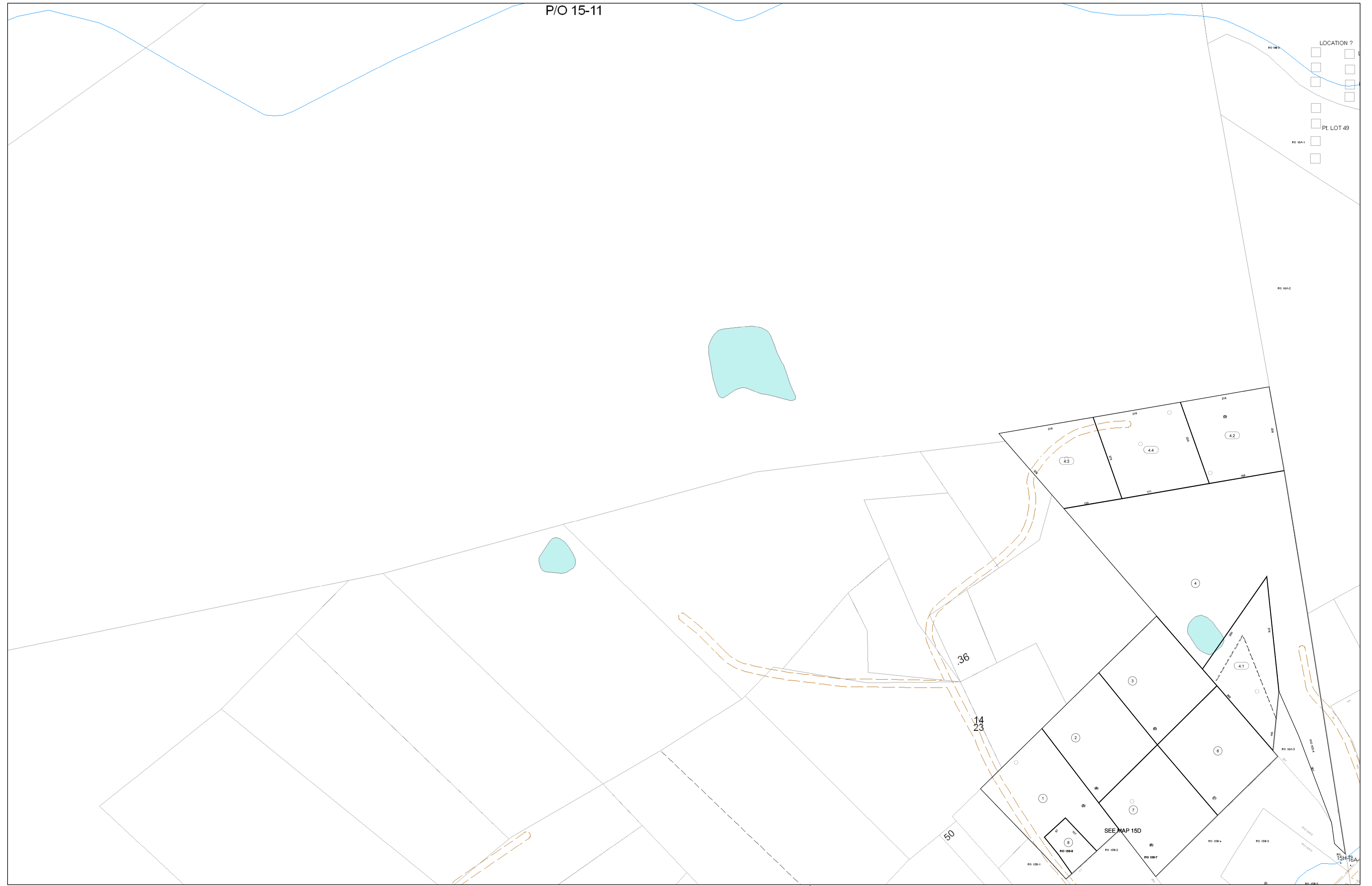


LOCATION ?
Pt. LOT 49



FOR TAX PURPOSES ONLY

Prepared By:
Eddie Young
Fayette County Assessor

Legend	
Property Line	—
Edge of pavement or roadway	- - - -
Corporation line	· · · · ·
District line	- · - · -
County Line	- - - - -

Restriction	
Original Lot Line	—
Deed lot number (in parenthesis)	(15)
Parcel or index number	Ⓜ
Improvement	○
Railroad	—+—

All tax maps created under the provisions of reappraisal legislation are the property of the Assessor of Fayette County, West Virginia and the reproduction, copying, modification, distribution sale of such tax maps or any copies thereof without the written permission of the Fayette County Assessor is prohibited by law.

15	15A	15B	15C	15D	15E
15F	15G	15H	15I	15J	15K
15L	15M	15N	15O	15P	15Q
15R	15S	15T	15U	15V	15W

FAYETTE COUNTY - WEST VIRGINIA
Office of Assessor

District: Plateau
Map No: 02-015D
Drawn By: Feb 23, 2007
Date: Feb 23, 2007
Scale: 1 inch equals 100 feet