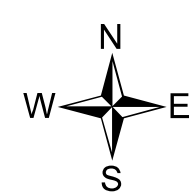
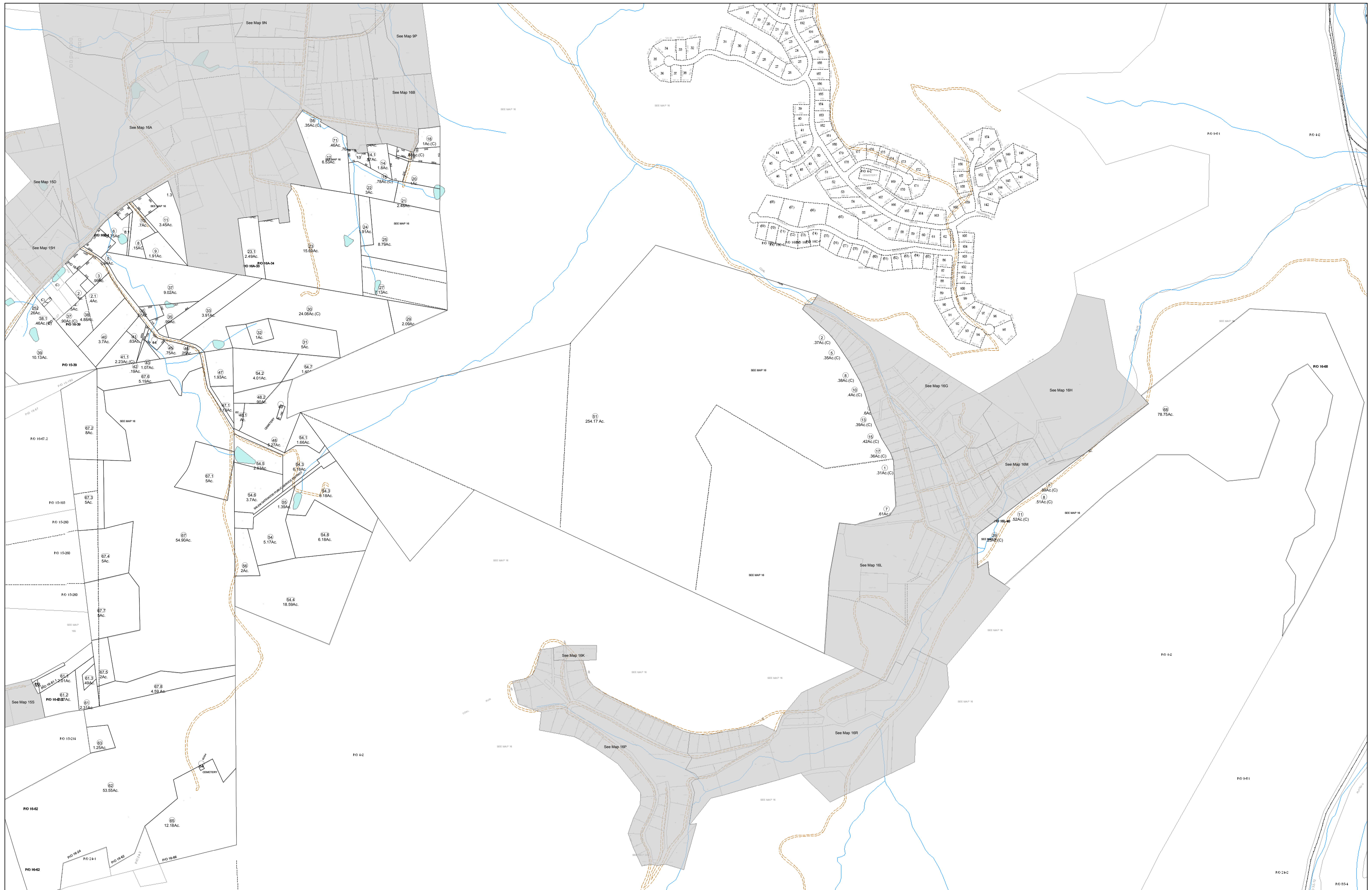


02-0016



FOR TAX PURPOSES ONLY

Prepared By:
Eddie Young
 Fayette County Assessor

Legend	
Property Line	—
Edge of pavement or roadway	—
Corporation line	—
District line	—
County Line	—
Original Lot Line	—
Deed lot number (in parenthesis)	(15)
Parcel or index number	Ⓢ
Improvement	⓪
Railroad	—

Restriction	
70	8
15	9
79	17
23	24
	85

FAYETTE COUNTY - WEST VIRGINIA
 Office of Assessor

District: Plateau
 Map No: 02-0016
 Drawn By:
 Date: Feb 23, 2007
 Scale: 1 inch equals 400 feet