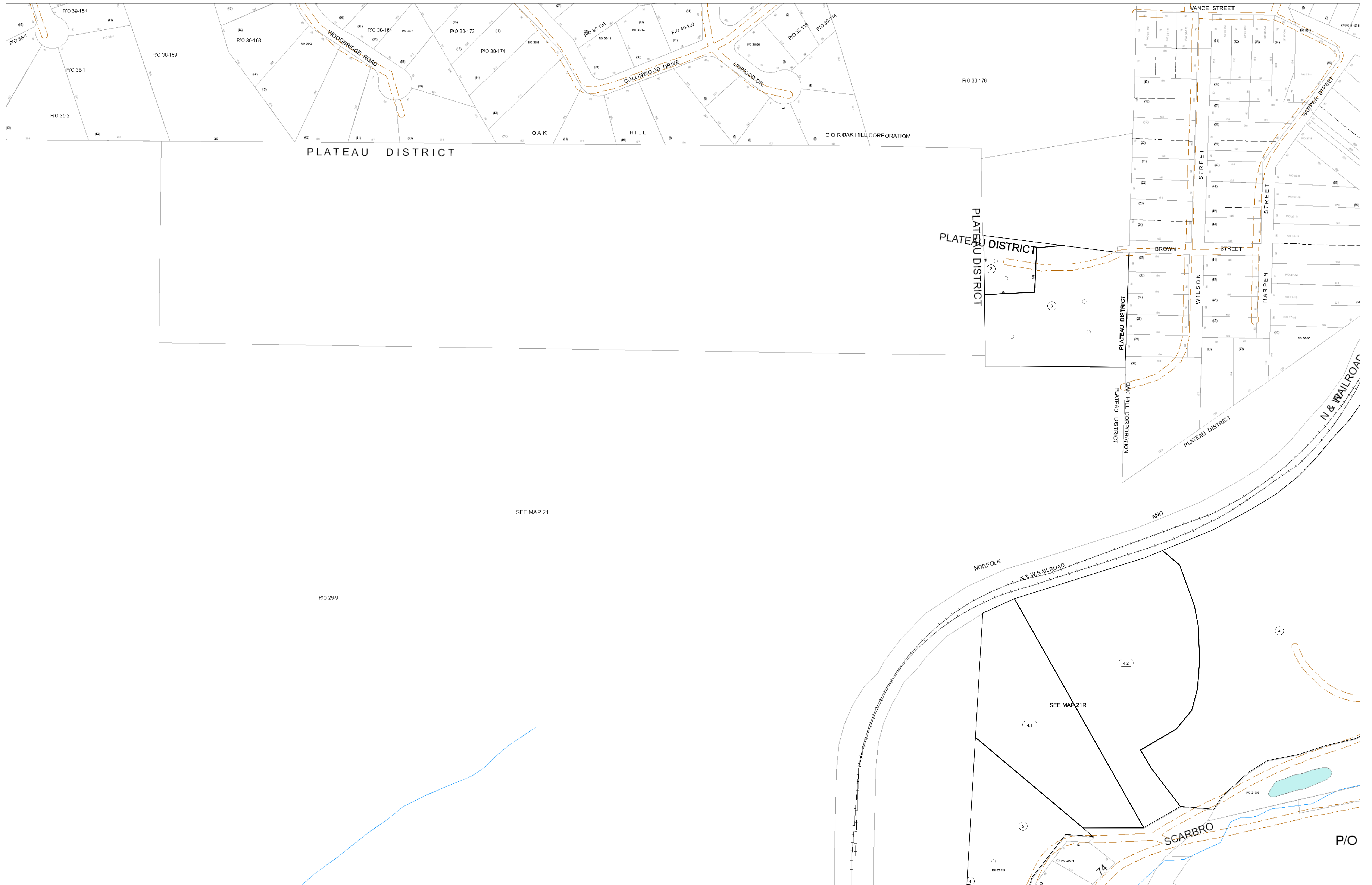


02-021R



FOR TAX PURPOSES ONLY
 Prepared By:
Eddie Young
 Fayette County Assessor

Legend	
Property Line	—
Edge of pavement or roadway	- - - - -
Corporation line	· · · · ·
District line	— · — · — ·
County Line	— · — · — ·
Original Lot Line	— · — · — ·
Deed lot number (in parenthesis)	(15)
Parcel or index number	Ⓜ
Improvement	○
Railroad	— · — · — ·

Restriction
 All tax maps created under the provisions of reappraisal legislation are the property of the Assessor of Fayette County, West Virginia and the reproduction, copying, modification, distribution sale of such tax maps or any copies thereof without the written permission of the Fayette County Assessor is prohibited by law.

20	21	14	15	16	17	22	11
		22	23	24	25	26	
		29	30	31	32	33	
		36	37	38	39	237	
28	29	28A	28B	28C	30A	31B	
		29E	29F	29G	29H	30E	31F
		29K	29L	29M	30J	31G	
		29T	29U	29V	30K	31H	

FAYETTE COUNTY - WEST VIRGINIA
 Office of Assessor

District: Plateau
Map No: 02-021R
Drawn By:
Date: Feb 23, 2007
Scale: 1 inch equals 100 feet