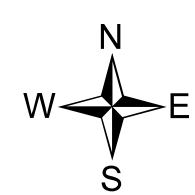
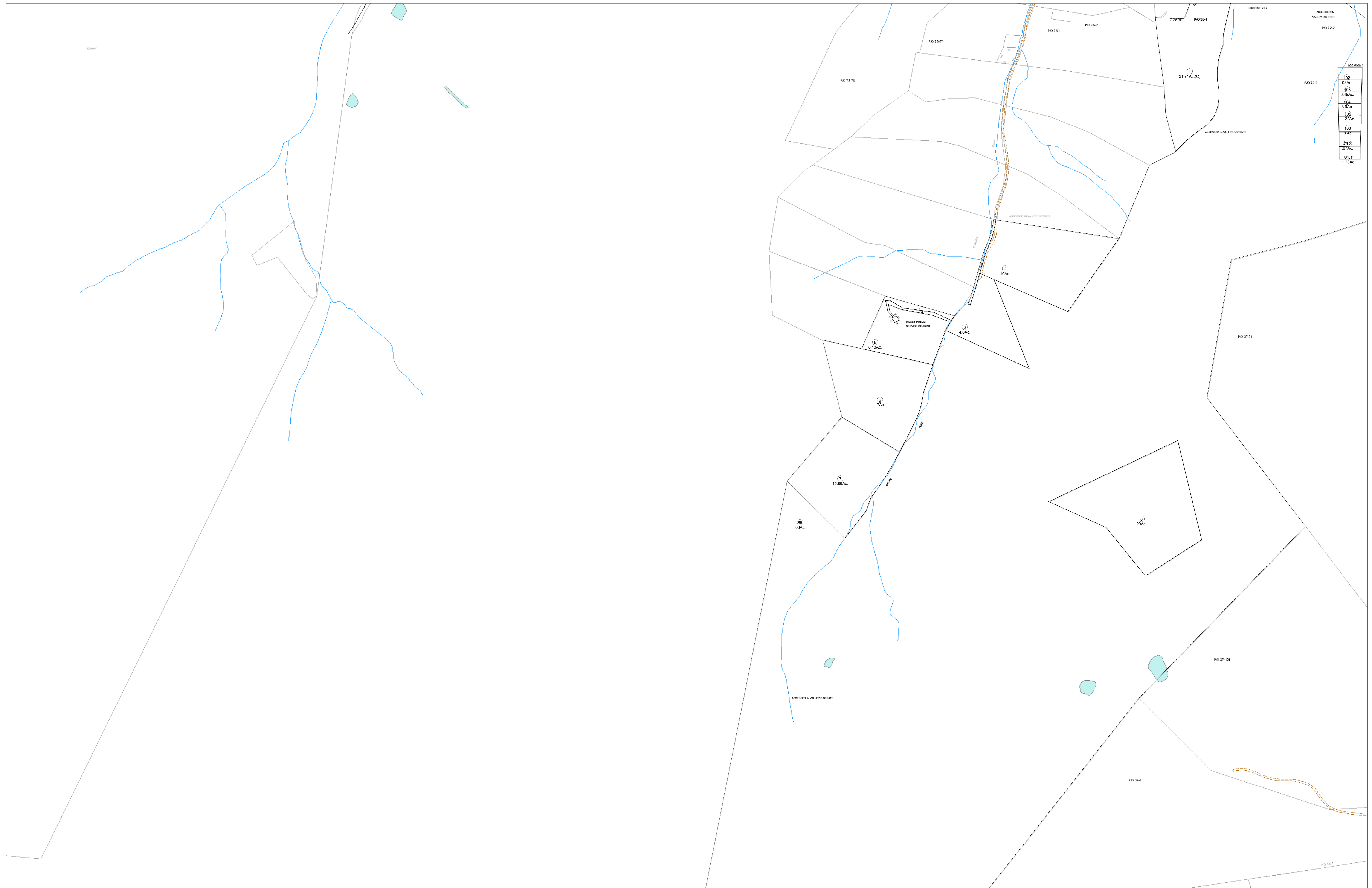


02-0026



FOR TAX PURPOSES ONLY

Prepared By:
Eddie Young
 Fayette County Assessor

Legend	
Property Line	Original Lot Line
Edge of pavement or roadway	Deed lot number (in parenthesis)
Corporation line	Parcel or index number
District line	Improvement
County Line	Railroad

Restriction

All tax maps created under the provisions of reappraisal legislation are the property of the Assessor of Fayette County, West Virginia and the reproduction, copying, modification, distribution sale of such tax maps or any copies thereof without the written permission of the Fayette County Assessor is prohibited by law.

72	73	74	19
75			27
	34		35

FAYETTE COUNTY - WEST VIRGINIA
 Office of Assessor

District: Plateau
Map No: 02-0026
Drawn By:
Date: Feb 23, 2007
Scale: 1 inch equals 400 feet