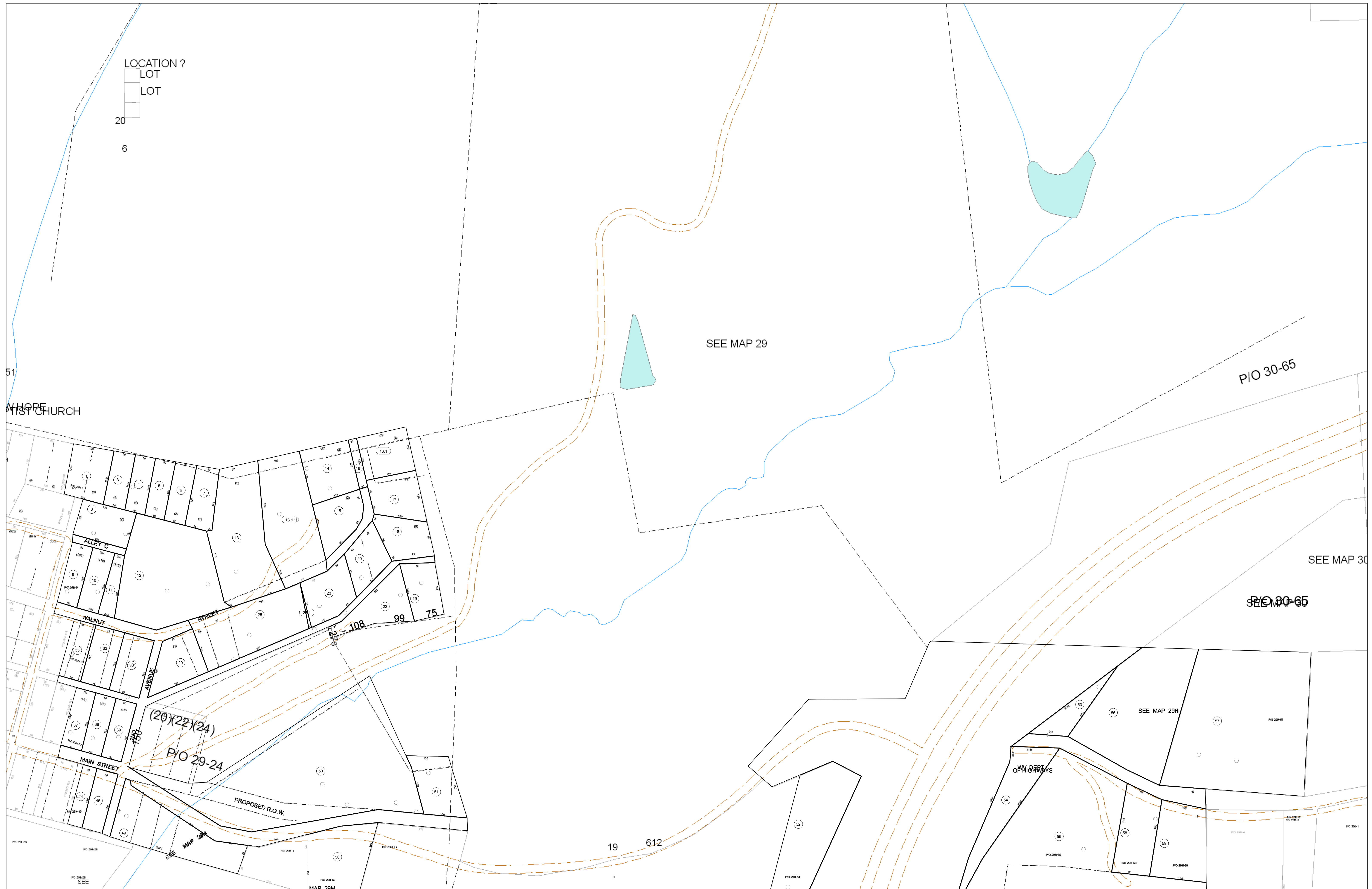
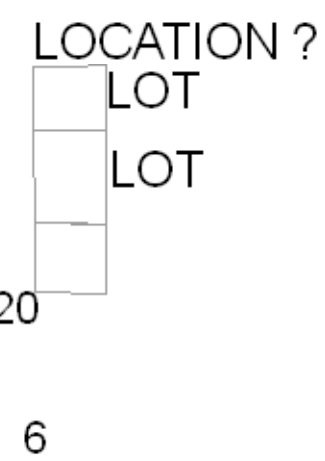


02-029H



FOR TAX PURPOSES ONLY
 Prepared By:
Eddie Young
 Fayette County Assessor

Legend	
Property Line	—
Edge of pavement or roadway	- - - - -
Corporation line	- · - · - · -
District line	- · - - - -
County Line	- - - - -
Original Lot Line	—
Deed lot number (in parenthesis)	(15)
Parcel or index number	Ⓟ
Improvement	○
Railroad	—+—+—+—

Restriction
 All tax maps created under the provisions of reappraisal legislation are the property of the Assessor of Fayette County, West Virginia and the reproduction, copying, modification, distribution sale or such tax maps or any copies thereof without the written permission of the Fayette County Assessor is prohibited by law.

21	29	30	31	32	33	221	221A
29A	29B	29C	30A	30B	30C	30D	30E
29	29F	29G	30E	30F	30G	30H	30I
29K	29L	29M	30J	30K	30L	30M	30N
29R	29S	30N	30P				
37	37C	37D	38A	38B	38C	38D	38E
	37E	37F	38E	38F	38G	38H	38I

FAYETTE COUNTY - WEST VIRGINIA
 Office of Assessor

District: Plateau
Map No: 02-029H
Drawn By:
Date: Feb 23, 2007
Scale: 1 inch equals 100 feet