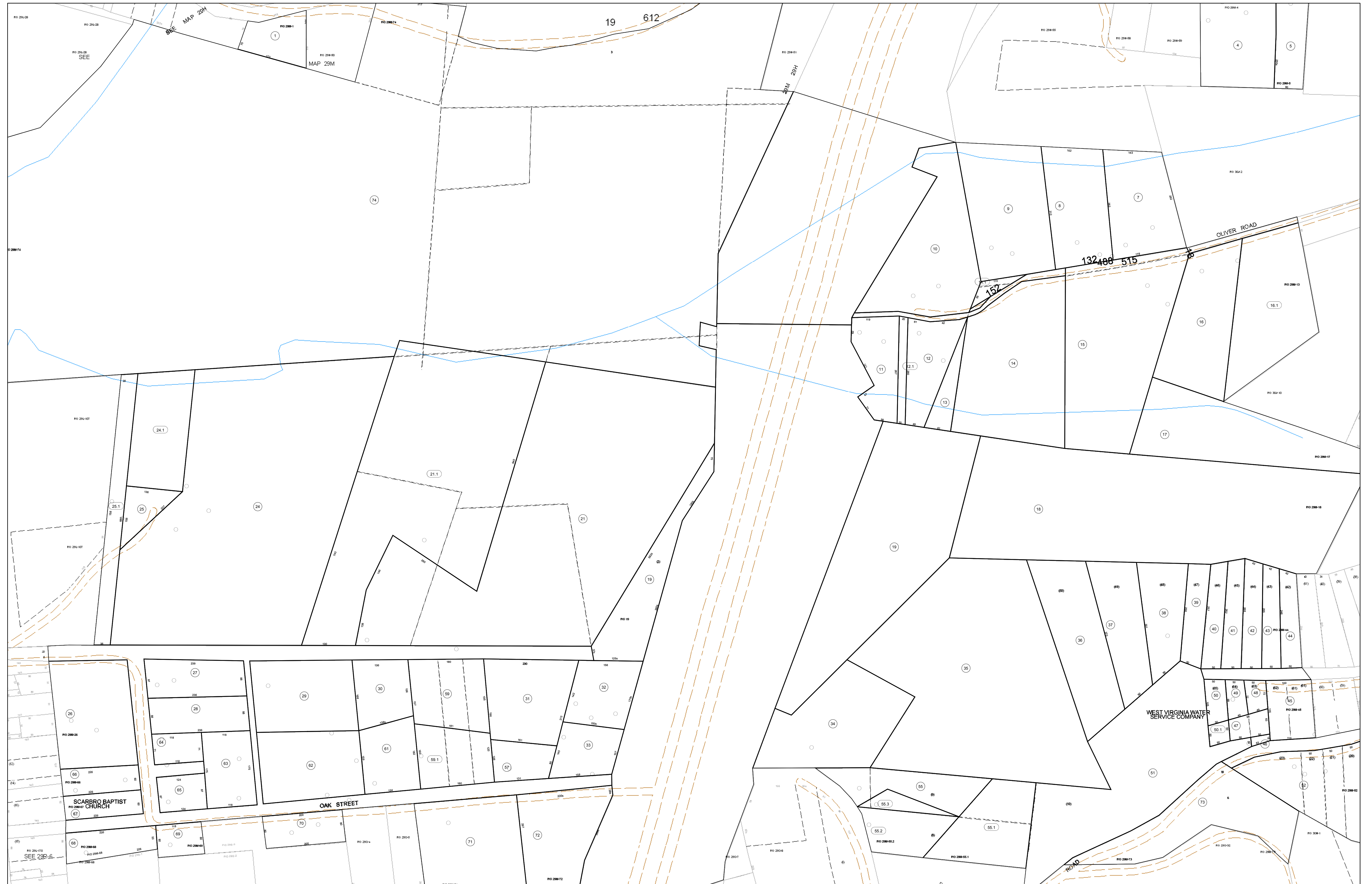


02-029M



**FOR TAX PURPOSES ONLY**

Prepared By:  
**Eddie Young**  
Fayette County Assessor

**Legend**

Property Line	—	Original Lot Line	—
Edge of pavement or roadway	- - - -	Deed lot number (in parenthesis)	(15)
Corporation line	- · - · -	Parcel or index number	15
District line	- · - · -	Improvement	○
County Line	- - - -	Railroad	—+—

**Restriction**

All tax maps created under the provisions of reappraisal legislation are the property of the Assessor of Fayette County, West Virginia and the reproduction, copying, modification, distribution sale of such tax maps or any copies thereof without the written permission of the Fayette County Assessor is prohibited by law.

21	29	30	31	32	33	221	221A
29A	29B	29C	30A	30B	30C	30D	30E
29F	29G	29H	30F	30G	30H	30I	30J
29K	29L	29M	30K	30L	30M	30N	30O
29P	29Q	29R	30P	30Q	30R	30S	30T
29U	29V	29W	30U	30V	30W	30X	30Y
29Z	30A	30B	30C	30D	30E	30F	30G
37	37C	37D	38A	38B	38C	38D	38E
37E	37F	37G	38F	38G	38H	38I	38J

**FAYETTE COUNTY - WEST VIRGINIA**  
Office of Assessor

District: Plateau  
Map No: 02-029M  
Drawn By: Feb 23, 2007  
Scale: 1 inch equals 100 feet