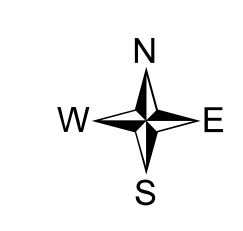
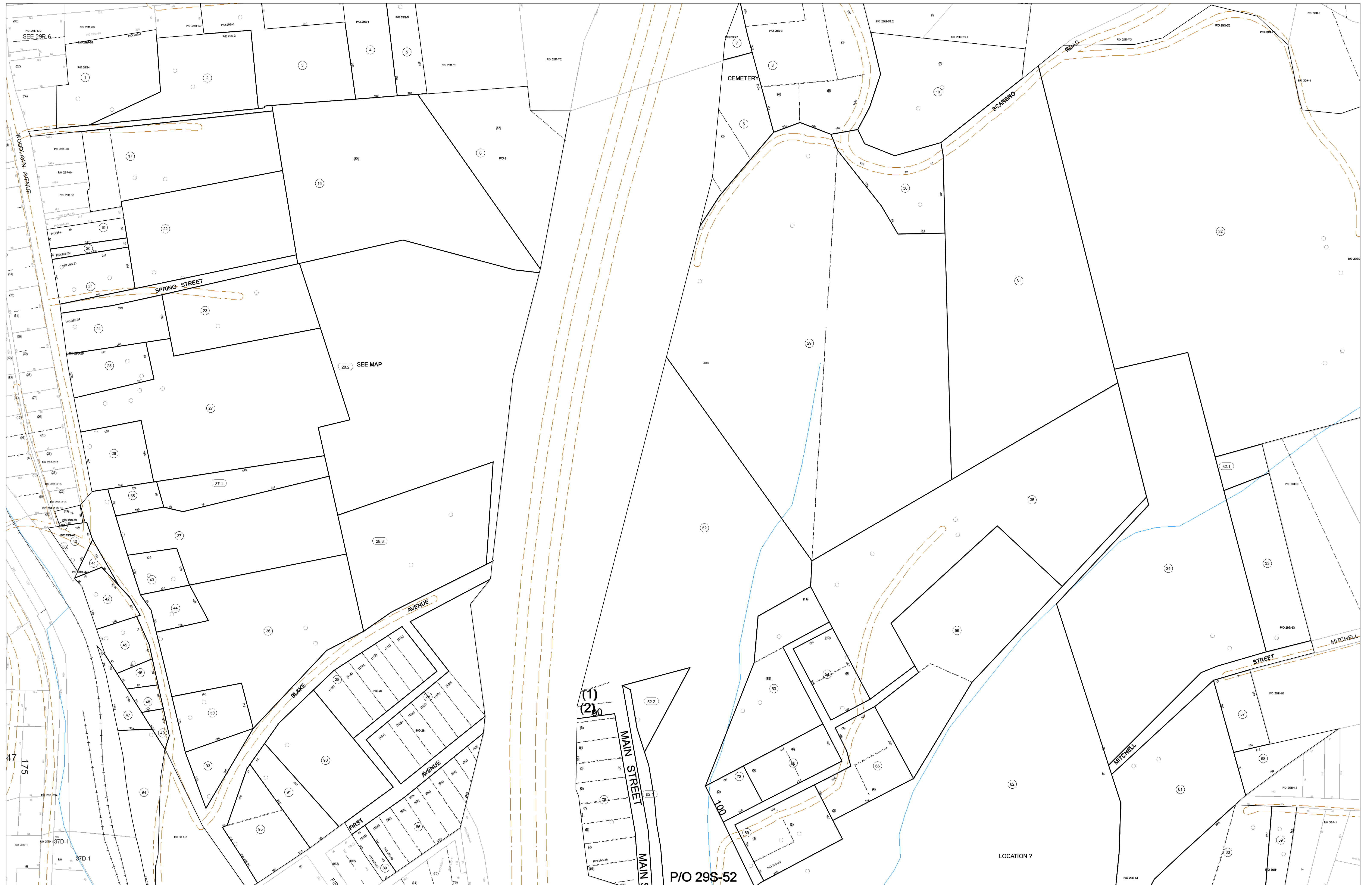


02-029S



**FOR TAX PURPOSES ONLY**  
 Prepared By:  
**Eddie Young**  
 Fayette County Assessor

Property Line		Original Lot Line	
—	Edge of pavement or roadway	—	Deed lot number (in parenthesis)
—	Corporation line	—	Parcel or index number
—	District line	—	Improvement
—	County Line	—	Railroad

Restriction	
(15)	
(16)	
(17)	
(18)	
(19)	
(20)	

All tax maps created under the provisions of reappraisal legislation are the property of the Assessor of Fayette County, West Virginia and the reproduction, copying, modification, distribution sale of such tax maps or any copies thereof without the written permission of the Fayette County Assessor is prohibited by law.

29A	29B	29C	29D	29E	29F	29G	29H	29I	29J	29K	29L	29M	29N	29O	29P	29Q	29R	29S	29T	29U	29V	29W	29X	29Y	29Z
30A	30B	30C	30D	30E	30F	30G	30H	30I	30J	30K	30L	30M	30N	30O	30P	30Q	30R	30S	30T	30U	30V	30W	30X	30Y	30Z
31A	31B	31C	31D	31E	31F	31G	31H	31I	31J	31K	31L	31M	31N	31O	31P	31Q	31R	31S	31T	31U	31V	31W	31X	31Y	31Z
32A	32B	32C	32D	32E	32F	32G	32H	32I	32J	32K	32L	32M	32N	32O	32P	32Q	32R	32S	32T	32U	32V	32W	32X	32Y	32Z

**FAYETTE COUNTY - WEST VIRGINIA**  
 Office of Assessor

District: Plateau  
 Map No: 02-029S  
 Drawn By: Feb 23, 2007  
 Scale: 1 inch equals 100 feet