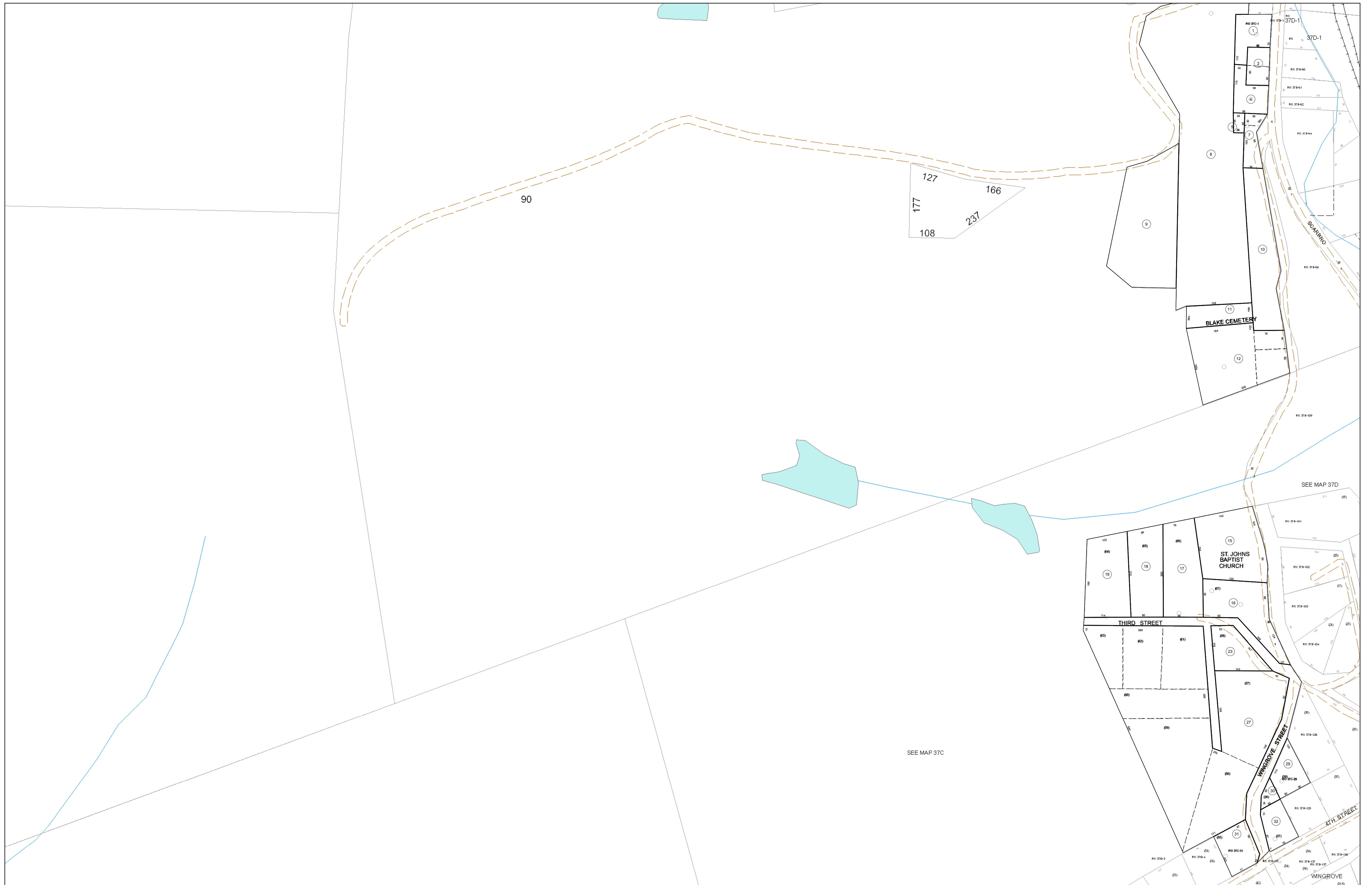


02-037C



FOR TAX PURPOSES ONLY

Prepared By:
Eddie Young
 Fayette County Assessor

Legend		Restriction	
Property Line	—	Original Lot Line	—
Edge of pavement or roadway	- - - - -	Deed lot number (in parenthesis)	(15)
Corporation line	· · · · ·	Parcel or index number	Ⓜ
District line	· · · · ·	Improvement	○
County Line	· · · · ·	Railroad	—+—

28	28A	28B	28C	30A	31B
29	29A	29B	29C	30B	31A
36	37	37A	37B	38	

All tax maps created under the provisions of reappraisal legislation are the property of the Assessor of Fayette County, West Virginia and the reproduction, copying, modification, distribution sale or such tax maps or any copies thereof without the written permission of the Fayette County Assessor is prohibited by law.

FAYETTE COUNTY - WEST VIRGINIA
 Office of Assessor

District: Plateau
 Map No: 02-037C
 Drawn By:
 Date: Feb 23, 2007
 Scale: 1 inch equals 100 feet