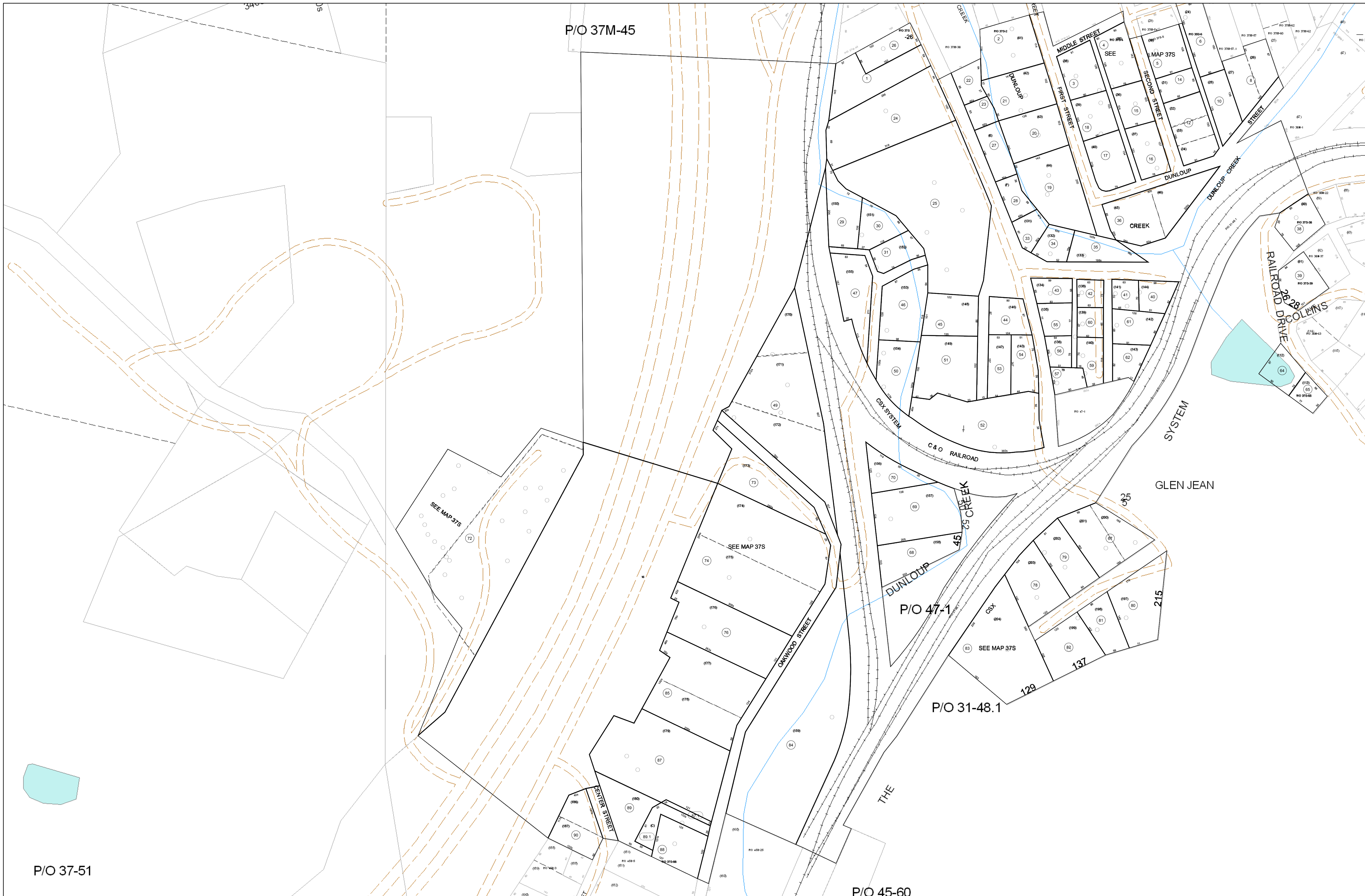


02-037S



P/O 37-51

**FOR TAX PURPOSES ONLY**  
 Prepared By:  
**Eddie Young**  
 Fayette County Assessor

Legend		Restriction	
	Property Line		Original Lot Line
	Edge of pavement or roadway		Deed lot number (in parenthesis)
	Corporation line		Parcel or index number
	District line		Improvement
	County Line		Railroad

FAYETTE COUNTY - WEST VIRGINIA  
 Office of Assessor

District: Plateau  
 Map No: 02-037S  
 Drawn By: Eddie Young  
 Date: Feb 23, 2007  
 Scale: 1 inch equals 100 feet