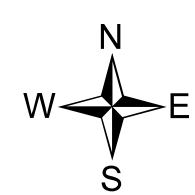
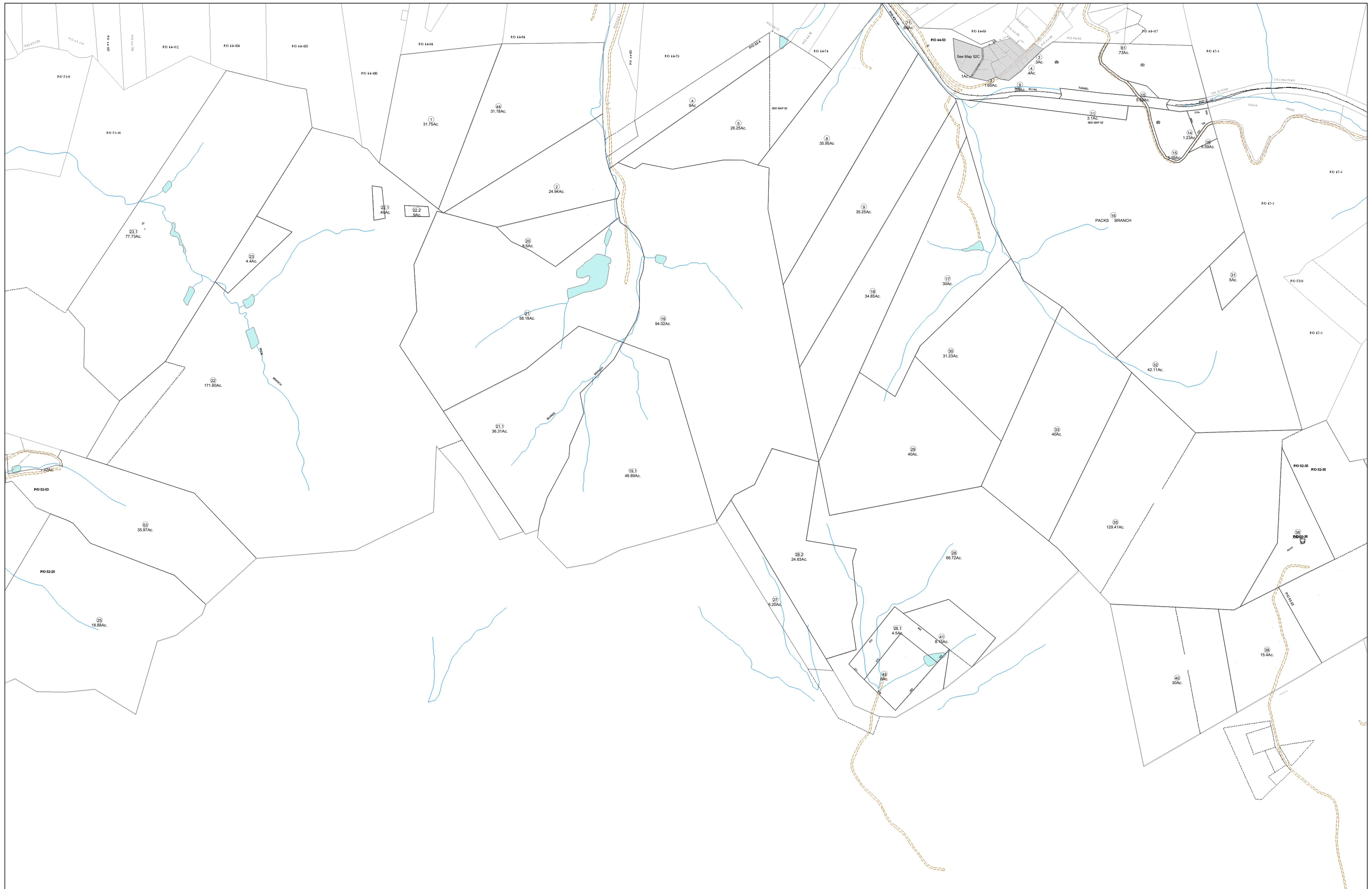


02-0052



**FOR TAX PURPOSES ONLY**

Prepared By:  
**Eddie Young**  
 Fayette County Assessor

Legend		Restriction	
Property Line	—	Original Lot Line	—
Edge of pavement or roadway	- - - - -	Deed lot number (in parenthesis)	(15)
Corporation line	- · - · - · -	Parcel or index number	Ⓢ
District line	- · - · - · -	Improvement	Ⓞ
County Line	- - - - -	Railroad	—+—+—+—

All tax maps created under the provisions of reappraisal legislation are the property of the Assessor of Fayette County, West Virginia and the reproduction, copying, modification, distribution sale of such tax maps or any copies thereof without the written permission of the Fayette County Assessor is prohibited by law.

35	36	37
43	44	45
51		53

**FAYETTE COUNTY - WEST VIRGINIA**  
 Office of Assessor

District: Plateau  
 Map No: 02-0052  
 Drawn By: [Name]  
 Date: Feb 23, 2007  
 Scale: 1 inch equals 400 feet