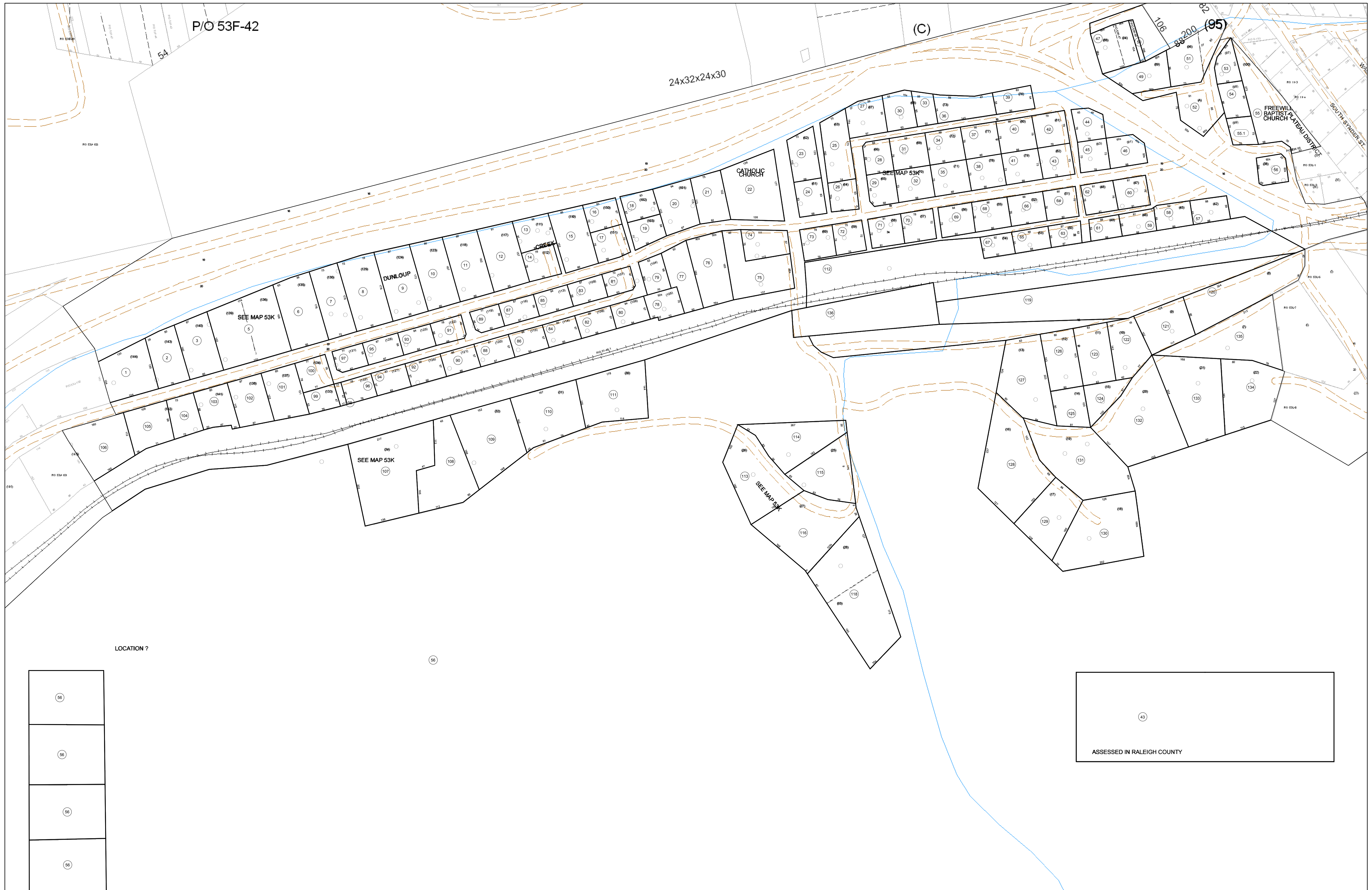


02-053K



P/O 53F-42

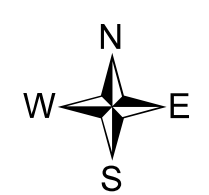
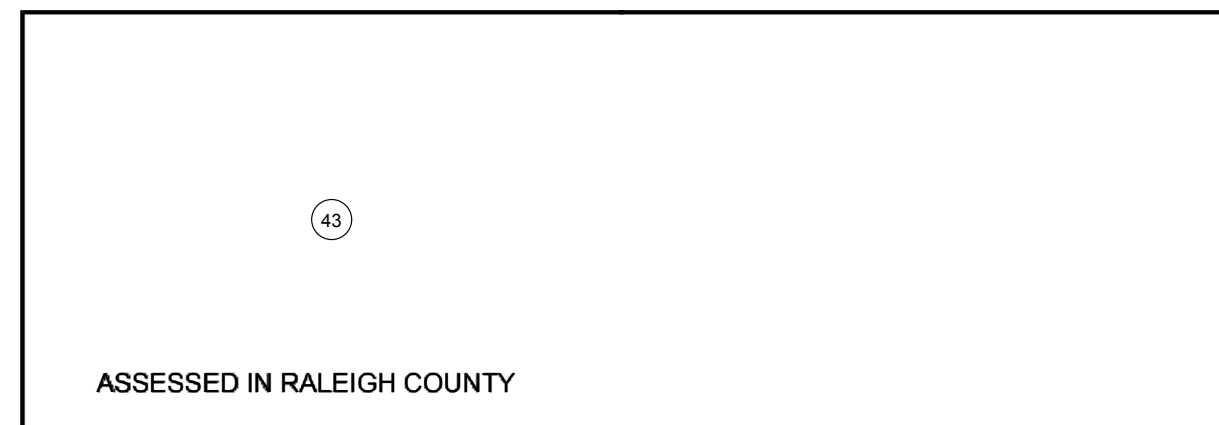
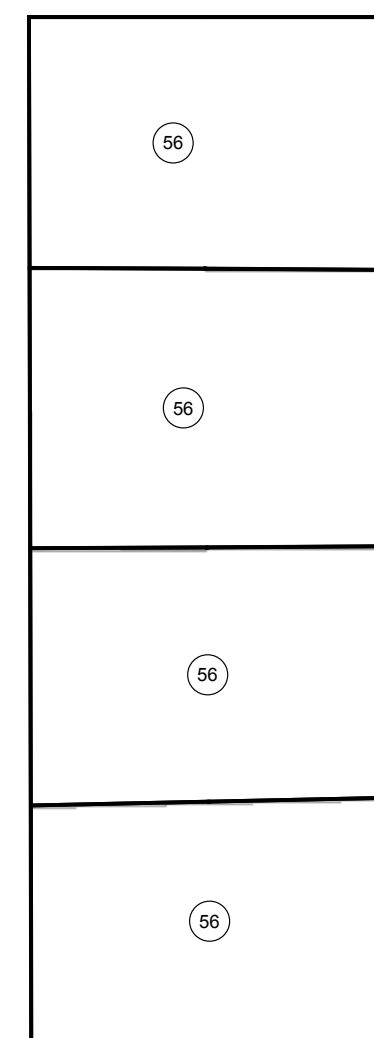
24x32x24x30

(C)

88200 (95)

FREWILL BAPTIST CHURCH

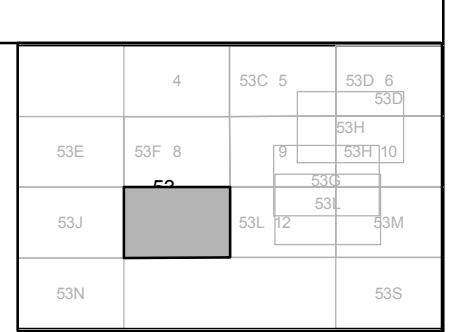
LOCATION ?



FOR TAX PURPOSES ONLY
 Prepared By:
Eddie Young
 Fayette County Assessor

Legend	
Property Line	Original Lot Line
Edge of pavement or roadway	Deed lot number (in parenthesis)
Corporation line	Parcel or index number
District line	Improvement
County Line	Railroad

Restriction	
(15)	
⊙	
○	



FAYETTE COUNTY - WEST VIRGINIA
 Office of Assessor

District: Plateau
Map No: 02-053K
Drawn By: Feb 23, 2007
Scale: 1 inch equals 100 feet