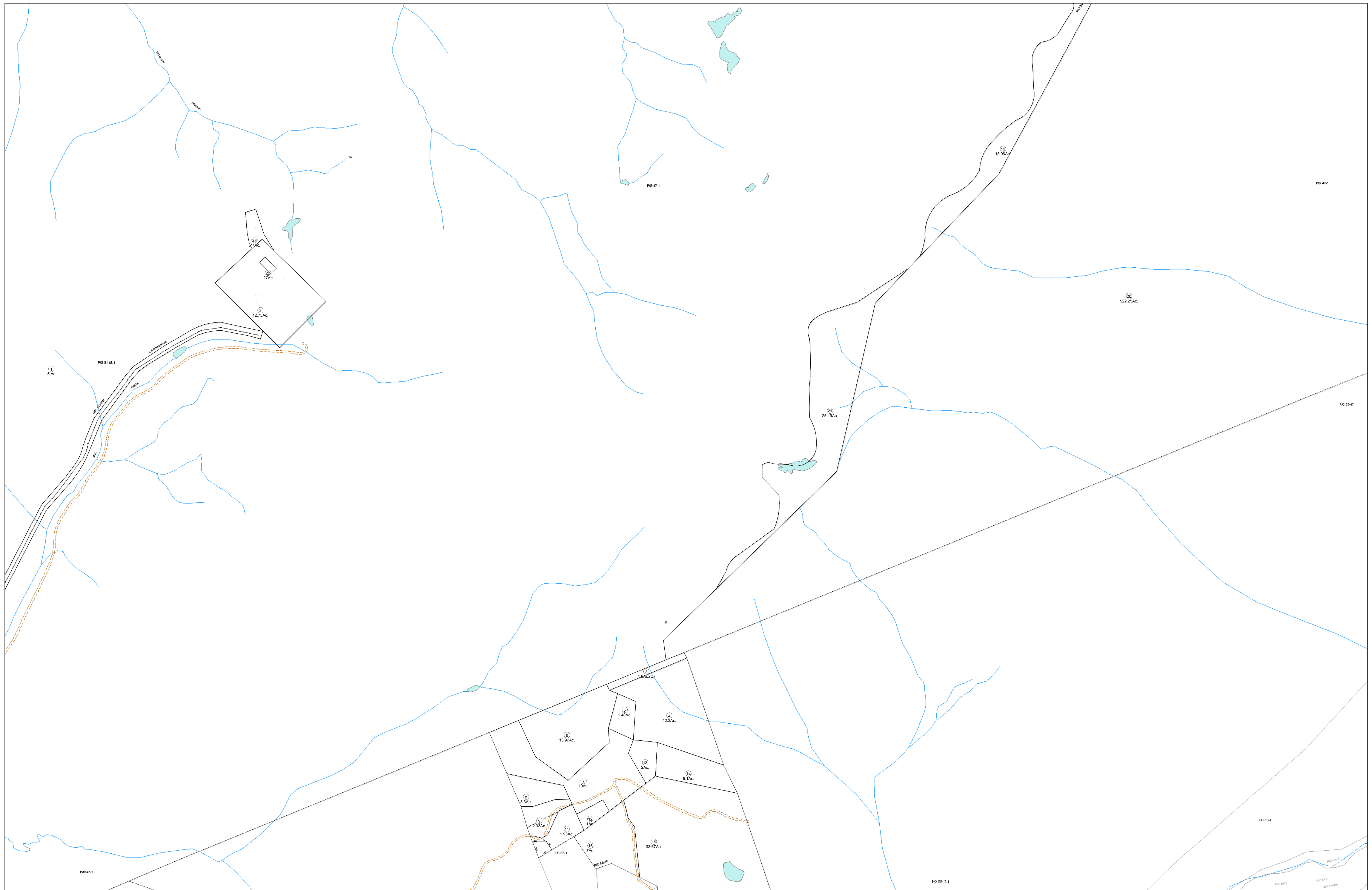


02-0055



**FOR TAX PURPOSES ONLY**  
 Prepared By:  
**Eddie Young**  
 Fayette County Assessor

**Legend**

Property Line	—
Edge of pavement or roadway	- - - - -
Corporation line	· · · · ·
District line	— · — · — ·
County Line	- - - - -

Original Lot Line	—
Deed lot number (in parenthesis)	(15)
Parcel or index number	⑮
Improvement	○
Railroad	—+—+—+—+—

**Restriction**


All tax maps created under the provisions of reappraisal legislation are the property of the Assessor of Fayette County, West Virginia and the reproduction, copying, modification, distribution sale or such tax maps or any copies thereof without the written permission of the Fayette County Assessor is prohibited by law.

47	48	107
114	56	115
122	58	123
		124

**FAYETTE COUNTY - WEST VIRGINIA**  
 Office of Assessor

**District:** Plateau  
**Map No:** 02-0055  
**Drawn By:**  
**Date:** Feb 23, 2007  
**Scale:** 1 inch equals 400 feet