

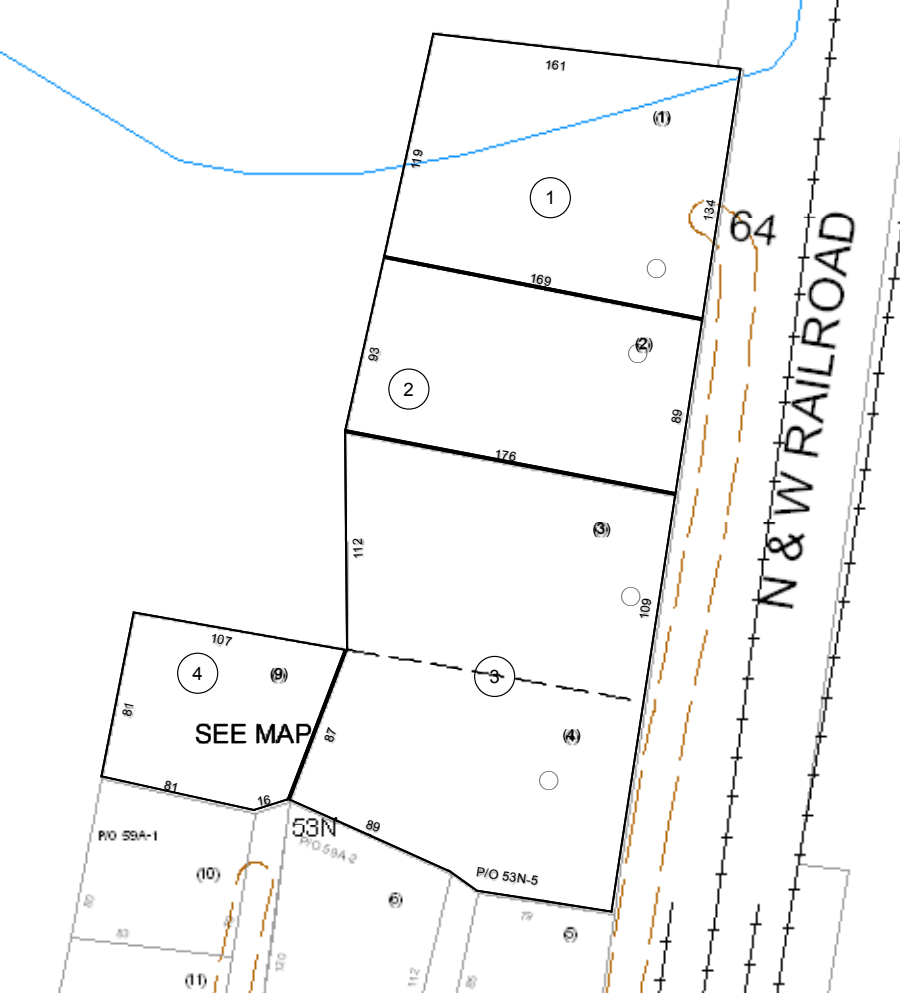
03-054N

P/O 43-58

SEE MAP 53

N & W RAILROAD

N & W RAILROAD



53-21

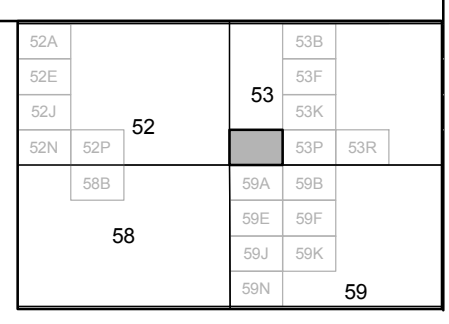


FOR TAX PURPOSES ONLY
 Prepared By:
Eddie Young
 Fayette County Assessor

Legend	
Property Line	—————
Edge of pavement or roadway	- - - - -
Corporation line
District line
County Line
Original Lot Line	—————
Deed lot number (in parenthesis)	(15)
Parcel or index number	Ⓜ
Improvement	○
Railroad	—————

Restriction

All tax maps created under the provisions of reappraisal legislation are the property of the Assessor of Fayette County, West Virginia and the reproduction, copying, modification, distribution sale or such tax maps or any copies thereof without the written permission of the Fayette County Assessor is prohibited by law.



FAYETTE COUNTY - WEST VIRGINIA
 Office of Assessor

District: Valley
Map No: 03-054N
Drawn By:
Date: Feb 23, 2007
Scale: 1 inch equals 100 feet