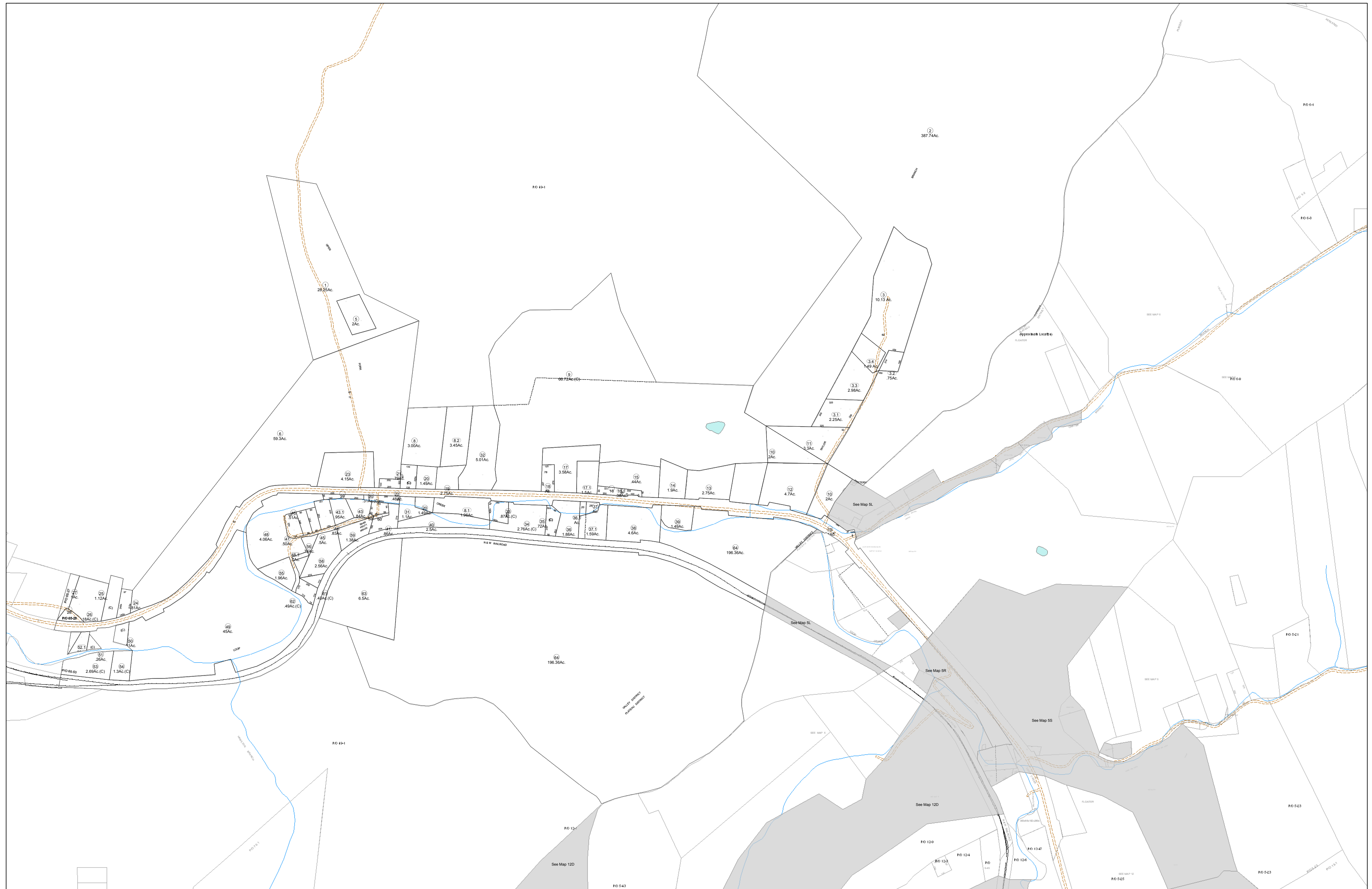


03-0065



FOR TAX PURPOSES ONLY

Prepared By:
Eddie Young
 Fayette County Assessor

Legend	
Property Line	—
Edge of pavement or roadway	- - - - -
Corporation line	— · — · —
District line	- · - · -
County Line	- · - · - · -
Original Lot Line	— (15) —
Deed lot number (in parenthesis)	(15)
Parcel or index number	⊙
Improvement	○
Railroad	— + — + —

Restriction	
59	60 57 58
64	68 6
69	70 12 13 14

All tax maps created under the provisions of reapportionment legislation are the property of the Assessor of Fayette County, West Virginia and the reproduction, copying, modification, distribution sale or use of such tax maps or any copies thereof without the written permission of the Fayette County Assessor is prohibited by law.

FAYETTE COUNTY - WEST VIRGINIA
 Office of Assessor

District: Valley
Map No: 03-0065
Drawn By:
Date: Feb 23, 2007
Scale: 1 inch equals 400 feet