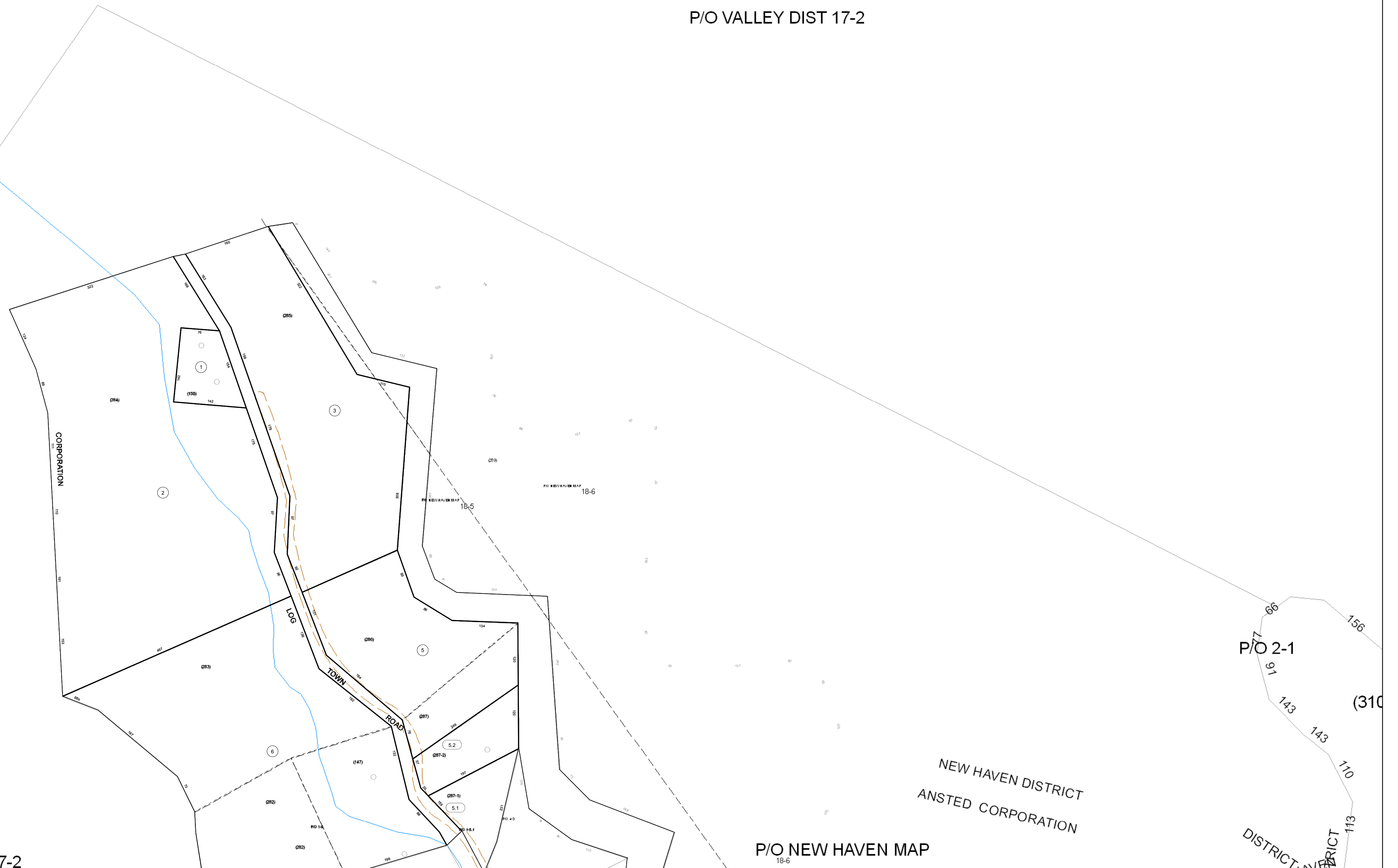


04-0001



P/O VALLEY DIST 17-2

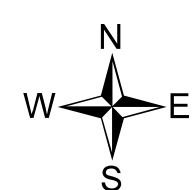


P/O VALLEY DIST 17-2

P/O NEW HAVEN MAP 18-6

NEW HAVEN DISTRICT
ANSTED CORPORATION

P/O 2-1
156
91
143
143
110
113
DISTRICT
DISTRICT
(310)



FOR TAX PURPOSES ONLY

Prepared By:
Eddie Young
Fayette County Assessor

Legend

Property Line	—
Edge of pavement or roadway	- - - - -
Corporation line	· · · · ·
District line	- · - · -
County Line	- - - - -
Original Lot Line	—
Deed lot number (in parenthesis)	(15)
Parcel or index number	Ⓟ
Improvement	○
Railroad	—+—+—+—

Restriction

All tax maps created under the provisions of reappraisal legislation are the property of the Assessor of Fayette County, West Virginia and the reproduction, copying, modification, distribution sale or such tax maps or any copies thereof without the written permission of the Fayette County Assessor is prohibited by law.

24	25
17	18
19	20
21	22
23	24
25	26

FAYETTE COUNTY - WEST VIRGINIA
Office of Assessor

District: Ansted Corp
Map No: 04-0001
Drawn By:
Date: Feb 23, 2007
Scale: 1 inch equals 100 feet