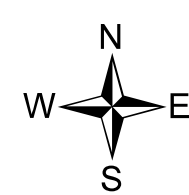
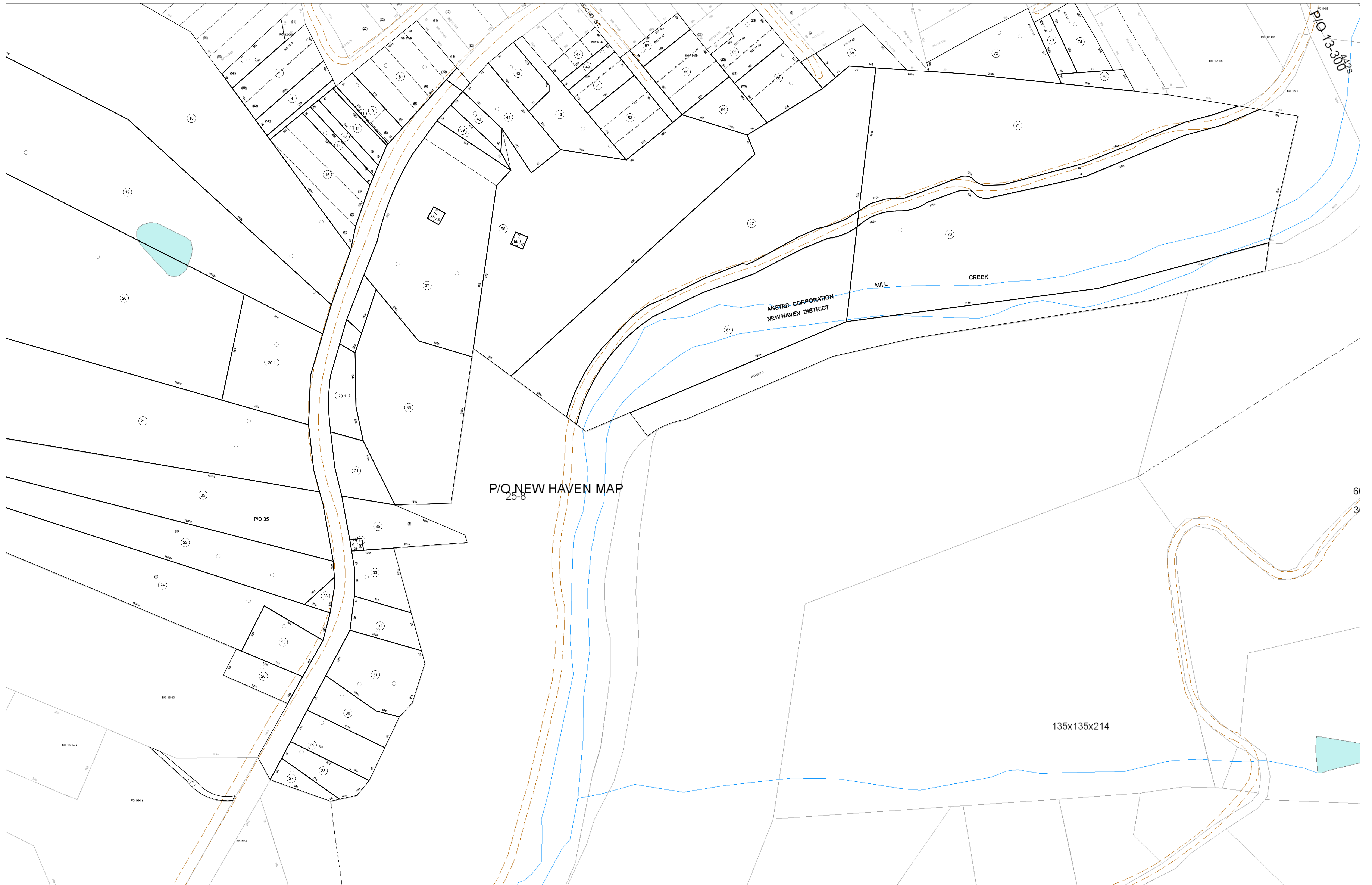


04-0017

P/O 13-300's



FOR TAX PURPOSES ONLY

Prepared By:
Eddie Young
 Fayette County Assessor

Legend	
Property Line	—
Edge of pavement or roadway	- - - -
Corporation line	- · - · -
District line	- · - · -
County Line	- · - · -
Original Lot Line	—
Deed lot number (in parenthesis)	(15)
Parcel or index number	Ⓟ
Improvement	○
Railroad	—+—+—+—

Restriction	

17	1	2	3	33
	4	5	6	18
	8	9	10	
	11	12	13	14
24	16	17	19	23A
	20	21	22	25
32				33

FAYETTE COUNTY - WEST VIRGINIA
 Office of Assessor

District: **Ansted Corp**
 Map No: **04-0017**
 Drawn By: **Feb 23, 2007**
 Date: **1 inch equals 100 feet**
 Scale: