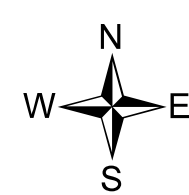
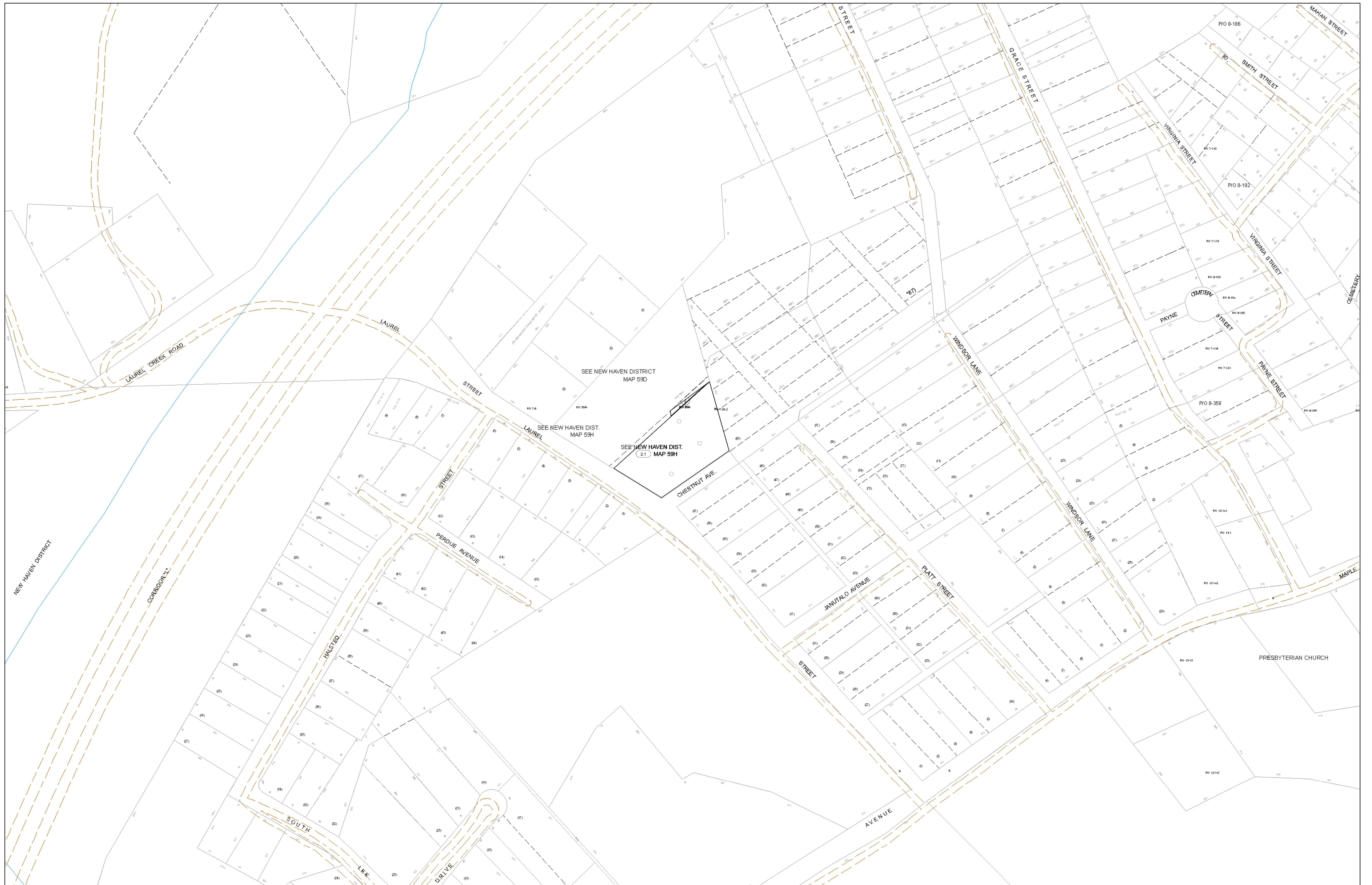


05-059H



**FOR TAX PURPOSES ONLY**

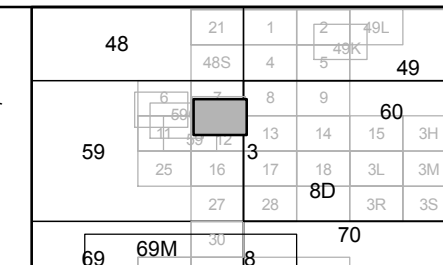
Prepared By:  
**Eddie Young**  
Fayette County Assessor

**Legend**

Property Line	—	Original Lot Line	—
Edge of pavement or roadway	- - - -	Deed lot number (in parenthesis)	(15)
Corporation line	- · - · -	Parcel or index number	Ⓟ
District line	- · - · -	Improvement	○
County Line	- · - · -	Railroad	—+—

**Restriction**

All tax maps created under the provisions of reappraisal legislation are the property of the Assessor of Fayette County, West Virginia and the reproduction, copying, modification, distribution sale of such tax maps or any copies thereof without the written permission of the Fayette County Assessor is prohibited by law.



**FAYETTE COUNTY - WEST VIRGINIA**  
Office of Assessor

District: Fayetteville Corp  
Map No: 05-059H  
Drawn By:  
Date: Feb 23, 2007  
Scale: 1 inch equals 100 feet