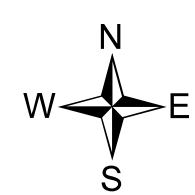
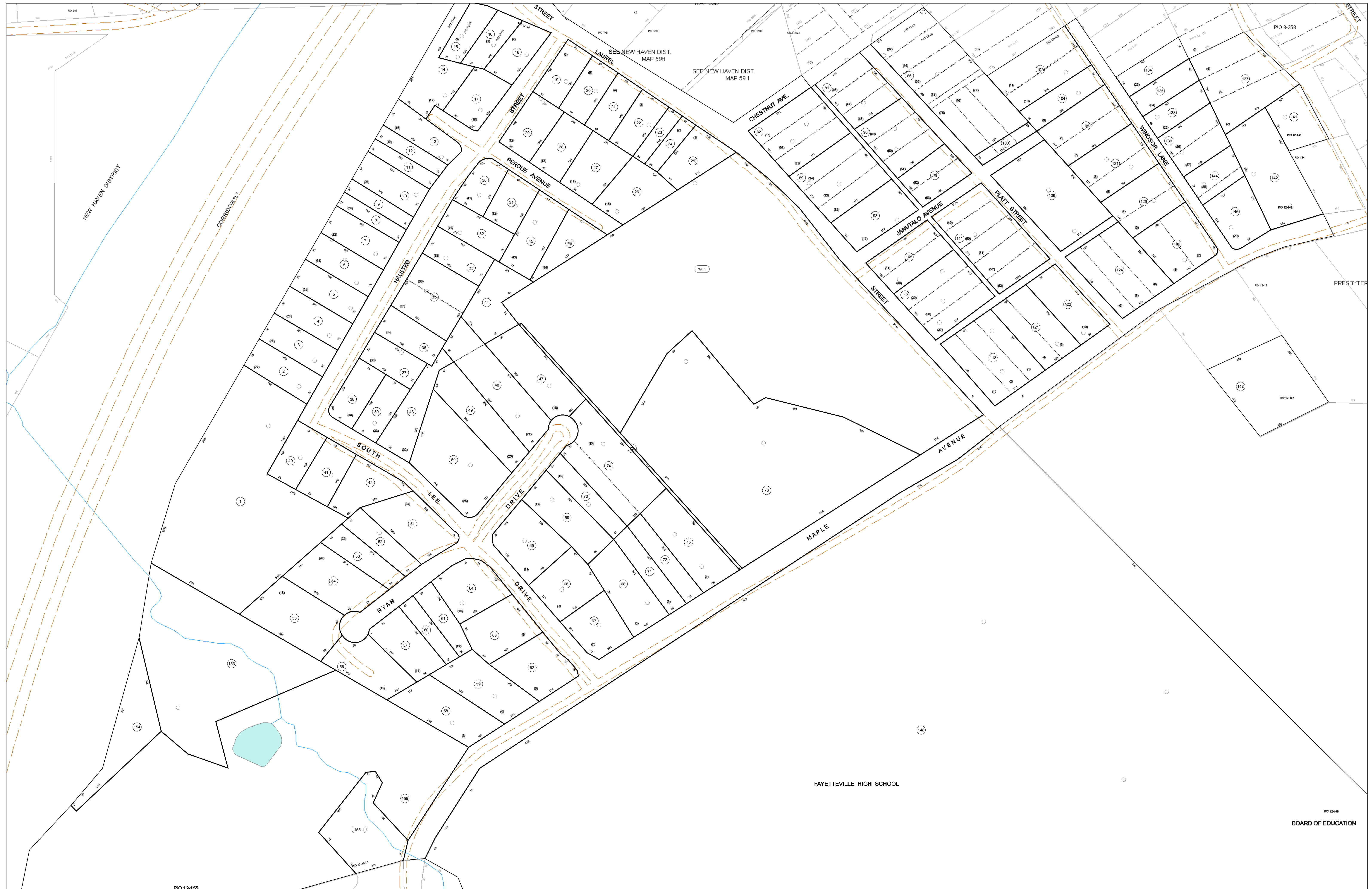


05-0012



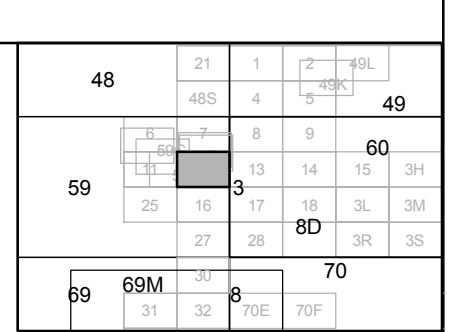
**FOR TAX PURPOSES ONLY**

Prepared By:  
**Eddie Young**  
 Fayette County Assessor

Legend	
Property Line	—
Edge of pavement or roadway	- - - -
Corporation line	- · - · -
District line	- · - - -
County Line	- - - - -
Original Lot Line	—
Deed lot number (in parenthesis)	(15)
Parcel or index number	15
Improvement	○
Railroad	—+—+—+—

**Restriction**

All tax maps created under the provisions of reappraisal legislation are the property of the Assessor of Fayette County, West Virginia and the reproduction, copying, modification, distribution sale or other use of such tax maps or any copies thereof without the written permission of the Fayette County Assessor is prohibited by law.



**FAYETTE COUNTY - WEST VIRGINIA**  
 Office of Assessor

District: Fayetteville Corp  
 Map No: 05-0012  
 Drawn By:  
 Date: Feb 23, 2007  
 Scale: 1 inch equals 100 feet