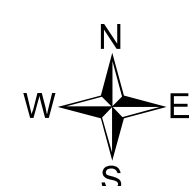
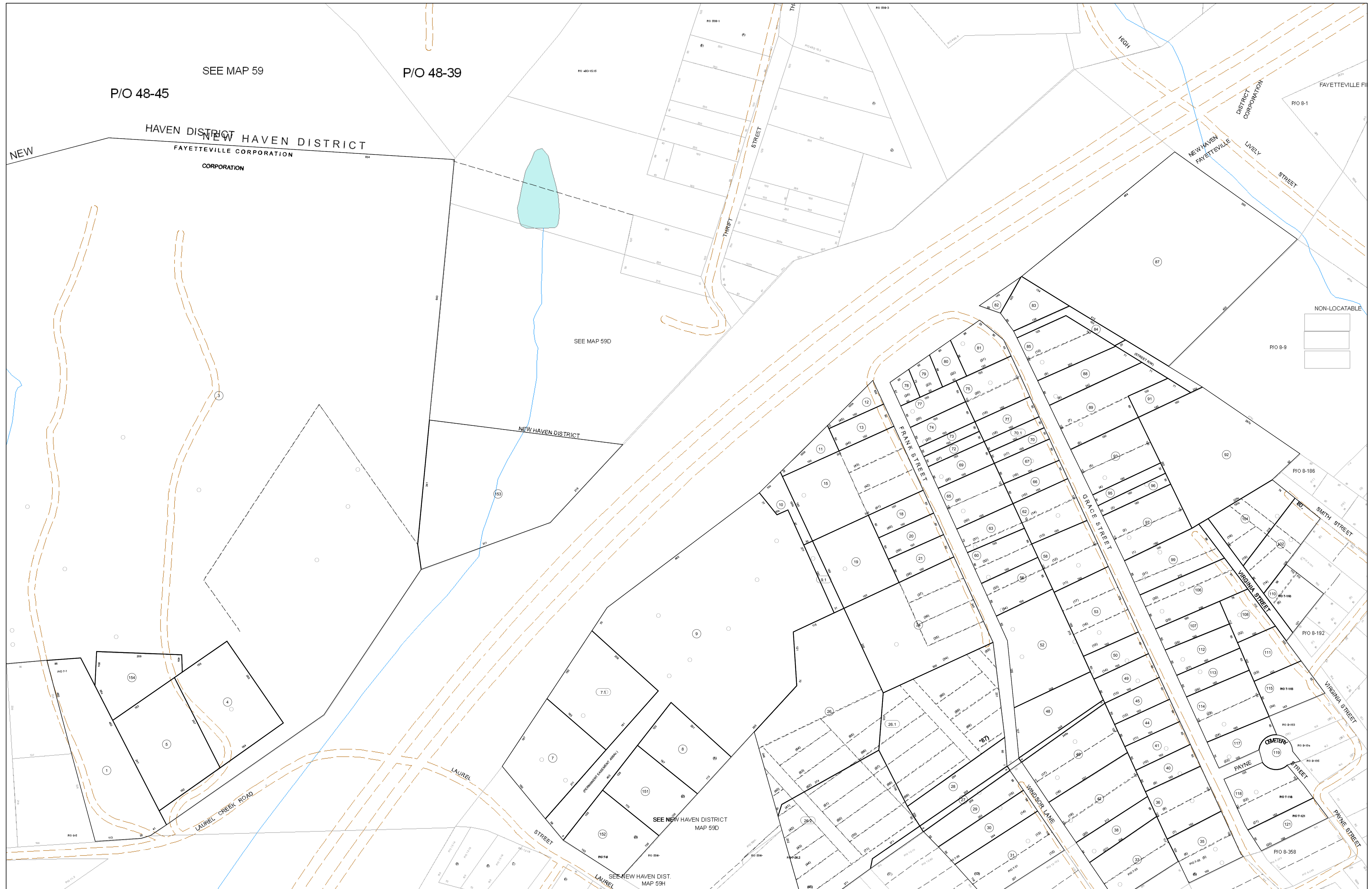


05-0007



**FOR TAX PURPOSES ONLY**

Prepared By:  
**Eddie Young**  
Fayette County Assessor

**Legend**

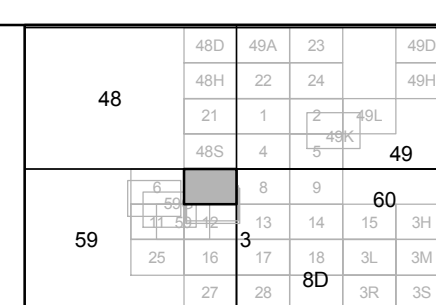
Property Line  
Edge of pavement or roadway  
Corporation line  
District line  
County Line

Original Lot Line  
Deed lot number (in parenthesis)  
Parcel or index number  
Improvement  
Railroad

(15)  
15  
15

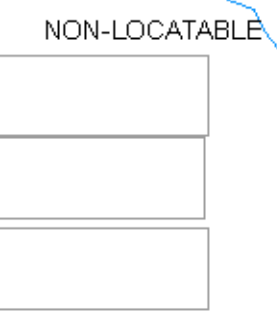
**Restriction**

All tax maps created under the provisions of reappraisal legislation are the property of the Assessor of Fayette County, West Virginia and the reproduction, copying, modification, distribution sale of such tax maps or any copies thereof without the written permission of the Fayette County Assessor is prohibited by law.



**FAYETTE COUNTY - WEST VIRGINIA**  
Office of Assessor

District: Fayetteville Corp  
Map No: 05-0007  
Drawn By:  
Date: Feb 23, 2007  
Scale: 1 inch equals 100 feet



P/O 8-9

P/O 8-186

P/O 8-192

P/O 8-118

P/O 8-118

P/O 8-358

P/O 48-45

SEE MAP 59

P/O 48-39

SEE MAP 59D

SEE NEW HAVEN DISTRICT MAP 59D

SEE NEW HAVEN DIST. MAP 59H

NEW HAVEN DISTRICT  
FAYETTEVILLE CORPORATION

NEW HAVEN DISTRICT

SEE NEW HAVEN DISTRICT MAP 59D

SEE NEW HAVEN DIST. MAP 59H

DISTRICT CORPORATION

FAYETTEVILLE FI

P/O 8-1

NEW HAVEN FAYETTEVILLE

LIVELY STREET

HIGH

THURST STREET

FRANK STREET

GRACE STREET

VIRGINIA STREET

SMITH STREET

VIRGINIA STREET

VIRGINIA STREET

PAYNE STREET

PAYNE STREET

LAUREL CREEK ROAD

LAUREL STREET

LAUREL STREET

WINDSOR LANE

CEMETERY

PAYNE STREET

PAYNE STREET