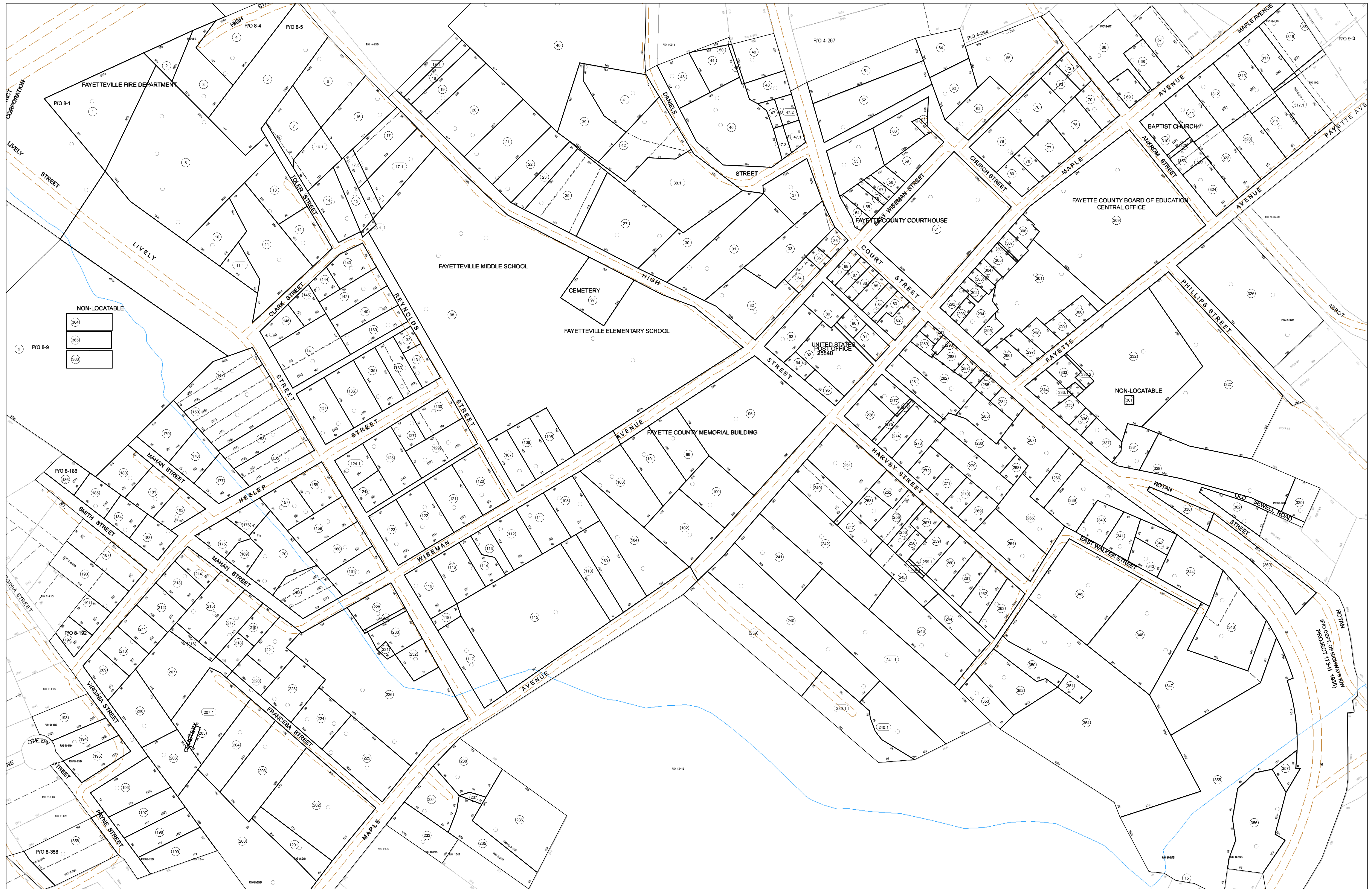
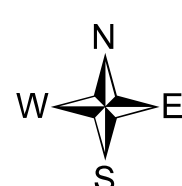


05-0008



FOR TAX PURPOSES ONLY

Prepared By:
Eddie Young
Fayette County Assessor

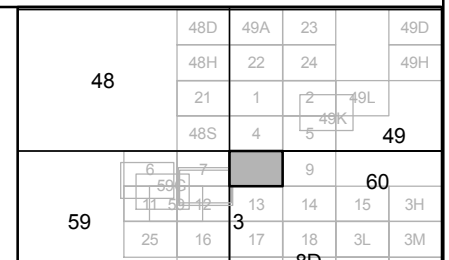


Legend

Property Line	Original Lot Line	Restriction
Edge of pavement or roadway	Deed lot number (in parenthesis)	
Corporation line	Parcel or index number	
District line	Improvement	
County Line	Railroad	

Restriction

All tax maps created under the provisions of reappraisal legislation are the property of the Assessor of Fayette County, West Virginia and the reproduction, copying, modification, distribution sale of such tax maps or any copies thereof without the written permission of the Fayette County Assessor is prohibited by law.



FAYETTE COUNTY - WEST VIRGINIA
Office of Assessor

District: Fayetteville Corp
Map No: 05-0008
Date: Feb 23, 2007
Scale: 1 inch equals 100 feet