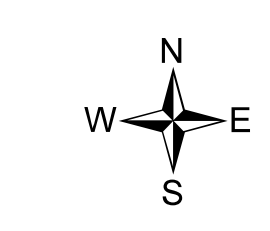
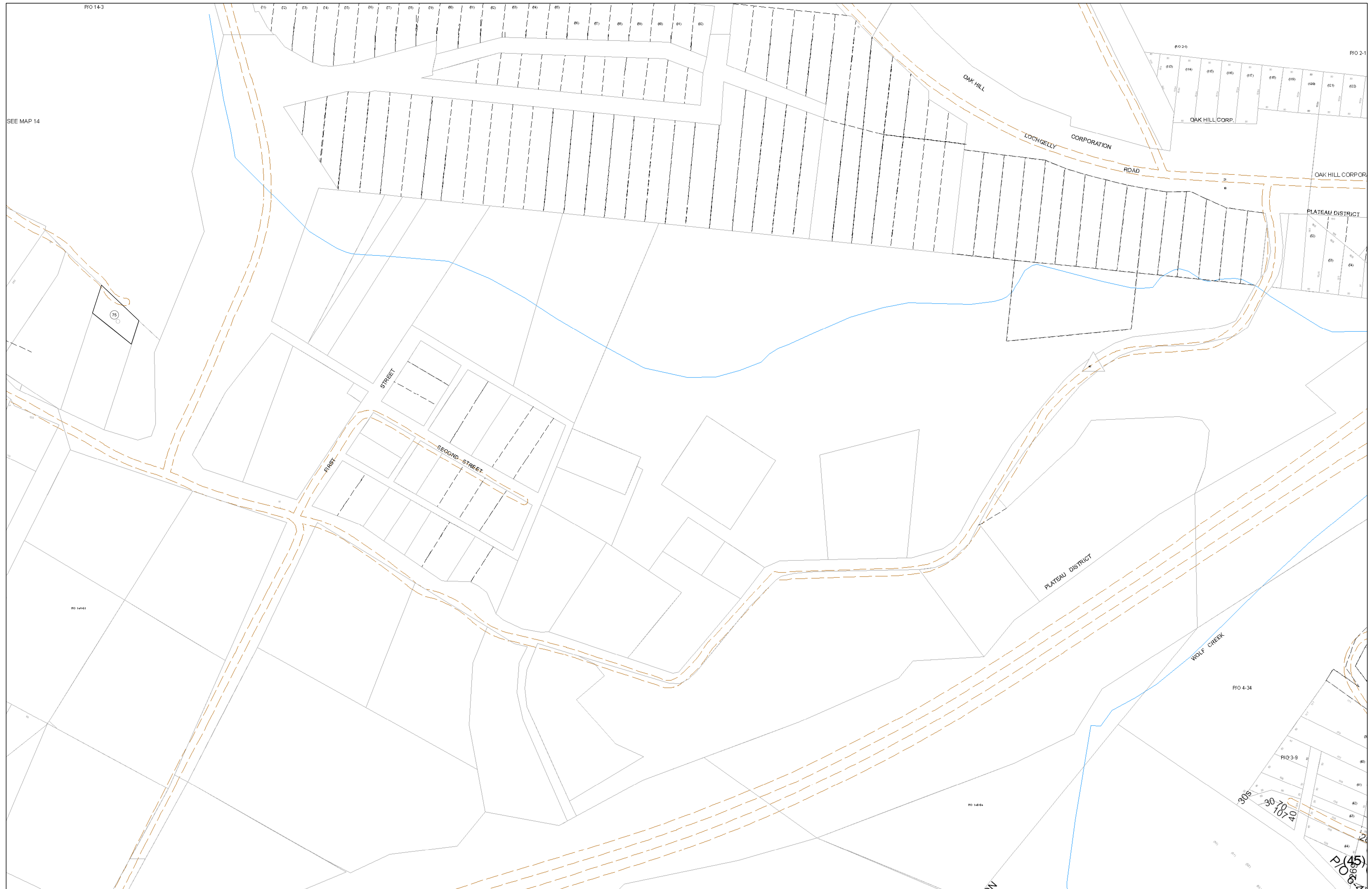


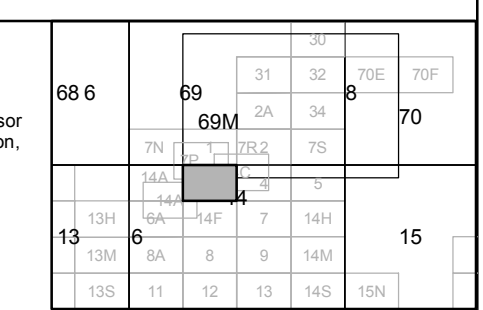
09-014B



**FOR TAX PURPOSES ONLY**  
 Prepared By:  
**Eddie Young**  
 Fayette County Assessor

Legend	
Property Line	—
Edge of pavement or roadway	---
Corporation line	----
District line	- - - - -
County Line	.....
Original Lot Line	---
Deed lot number (in parenthesis)	(15)
Parcel or index number	Ⓜ
Improvement	⊙
Railroad	—+—

Restriction	



**FAYETTE COUNTY - WEST VIRGINIA**  
 Office of Assessor

District: **Oak Hill Corp**  
 Map No: **09-014B**  
 Drawn By: **Feb 23, 2007**  
 Date: **1 inch equals 100 feet**  
 Scale: