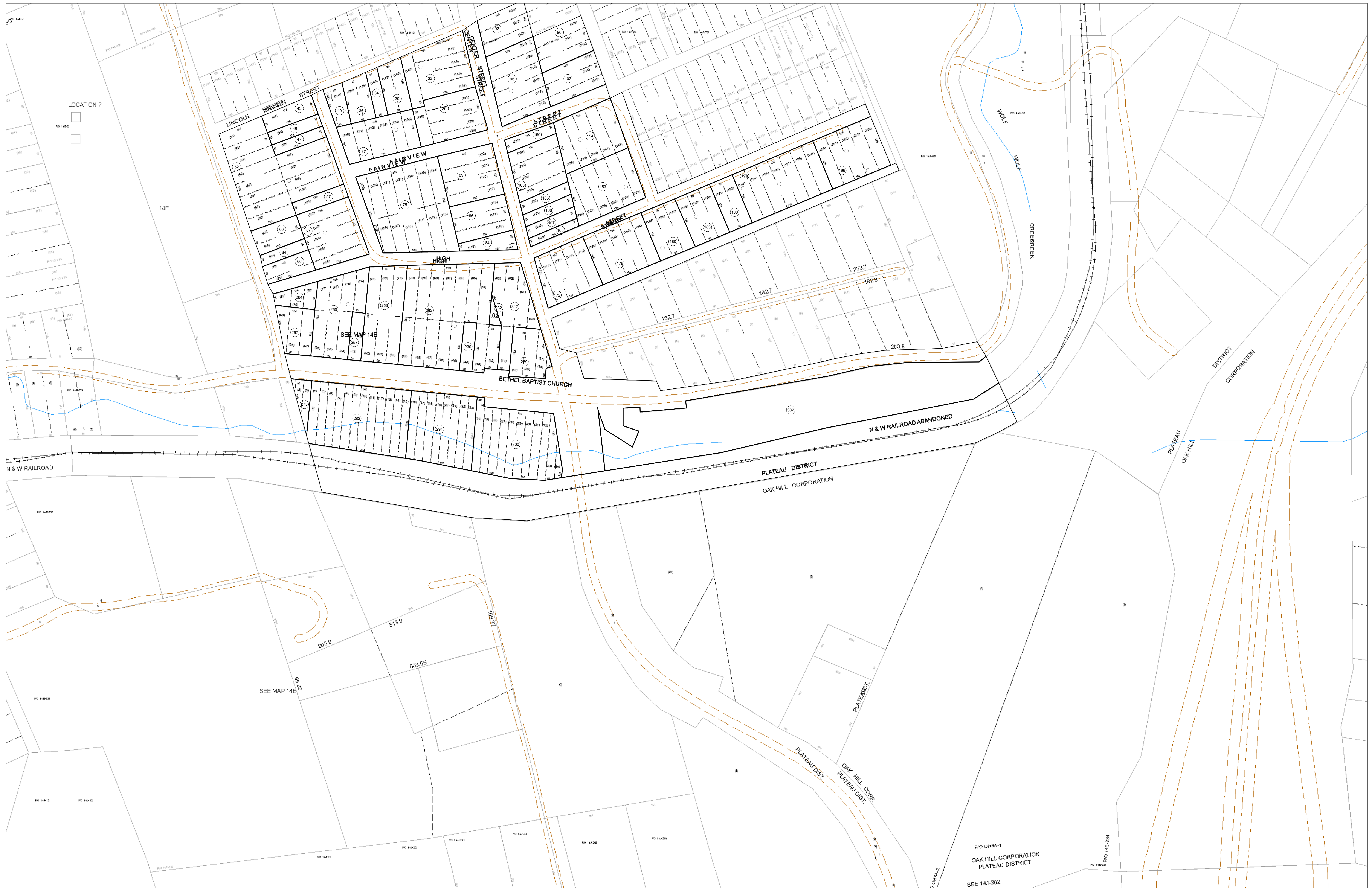


09-014E



FOR TAX PURPOSES ONLY
 Prepared By:
Eddie Young
 Fayette County Assessor

Legend	
Property Line	—
Edge of pavement or roadway	- - - -
Corporation line	— · — ·
District line	- - - - -
County Line	— · — · — ·
Original Lot Line	— () —
Deed lot number (in parenthesis)	(15)
Parcel or index number	Ⓜ
Improvement	○
Railroad	— + — + — +

Restriction
 All tax maps created under the provisions of reappraisal legislation are the property of the Assessor of Fayette County, West Virginia and the reproduction, copying, modification, distribution sale of such tax maps or any copies thereof without the written permission of the Fayette County Assessor is prohibited by law.

68	6	69	69M	34
13	13C	13A	14	14A
131	131C	131A	141	141A
132	132C	132A	142	142A
133	133C	133A	143	143A
134	134C	134A	144	144A
135	135C	135A	145	145A
136	136C	136A	146	146A
137	137C	137A	147	147A
138	138C	138A	148	148A
139	139C	139A	149	149A
140	140C	140A	150	150A

FAYETTE COUNTY - WEST VIRGINIA
 Office of Assessor

District: Oak Hill Corp
Map No: 09-014E
Drawn By: Feb 23, 2007
Date: Feb 23, 2007
Scale: 1 inch equals 100 feet