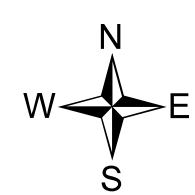
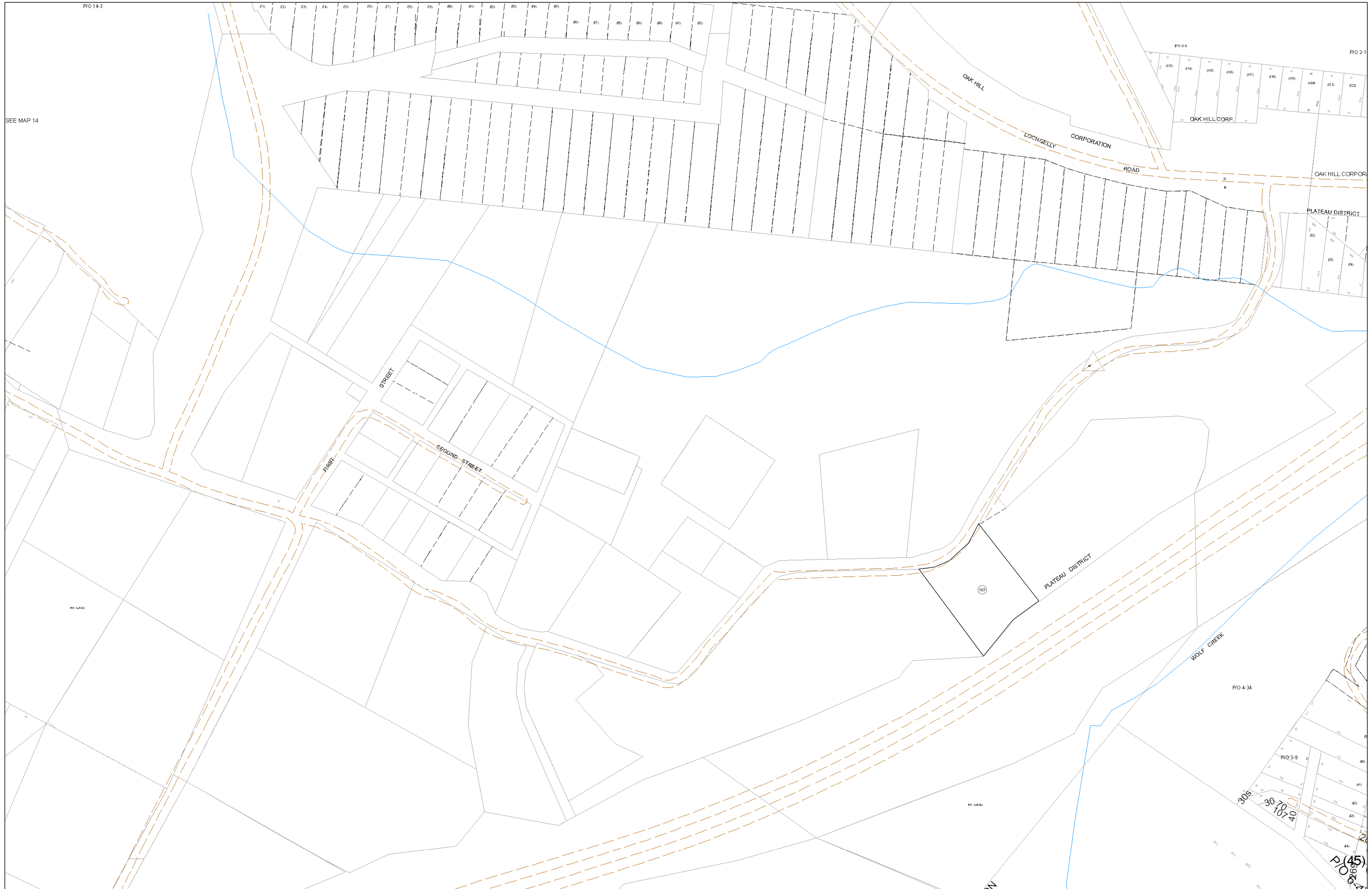


09-078B

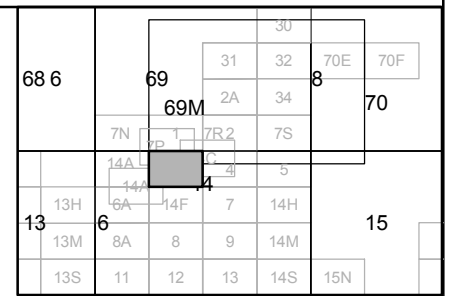


**FOR TAX PURPOSES ONLY**

Prepared By:  
**Eddie Young**  
 Fayette County Assessor

Legend	
Property Line	—
Edge of pavement or roadway	- - - - -
Corporation line	· · · · ·
District line	· · · · ·
County Line	· · · · ·
Original Lot Line	- - - - -
Deed lot number (in parenthesis)	(15)
Parcel or index number	Ⓢ
Improvement	⓪
Railroad	—+—+—+—

Restriction	



**FAYETTE COUNTY - WEST VIRGINIA**  
 Office of Assessor

District: Oak Hill Corp  
 Map No: 09-078B  
 Drawn By:  
 Date: Feb 23, 2007  
 Scale: 1 inch equals 100 feet