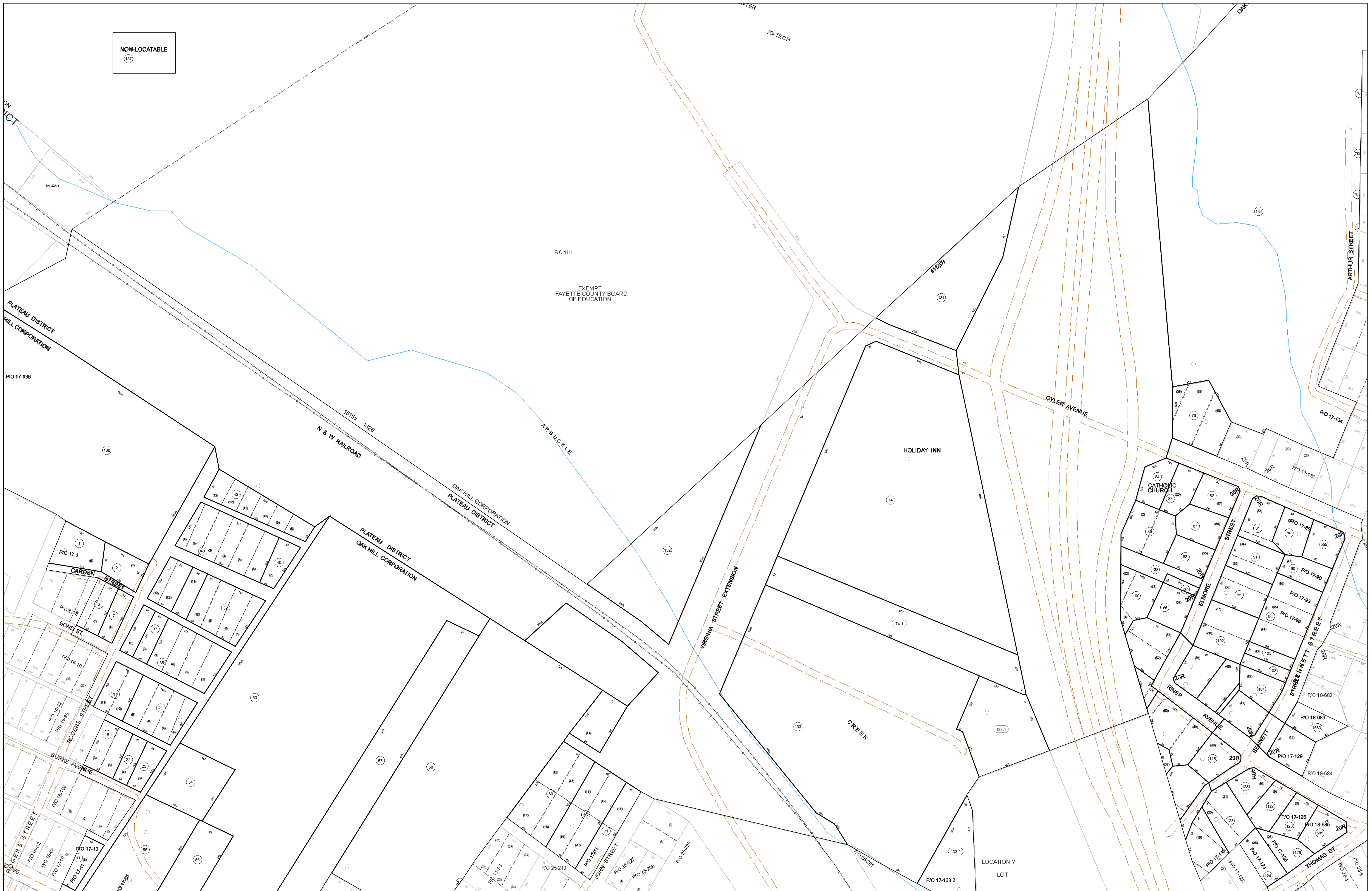


NON-LOCATABLE
137

09-0017



FOR TAX PURPOSES ONLY
Prepared By:
Eddie Young
Fayette County Assessor

Legend	
Property Line	Original Lot Line
Edge of pavement or roadway	Deed lot number (in parenthesis)
Corporation line	Parcel or index number
District line	Improvement
County Line	Railroad

Restriction
All tax maps created under the provisions of reappraisal legislation are the property of the Assessor of Fayette County, West Virginia and the reproduction, copying, modification, distribution sale of such tax maps or any copies thereof without the written permission of the Fayette County Assessor is prohibited by law.

13	14	15	16	17	18	19	20	21
22	23	24	25	26	27	28	29	30
31	32	33	34	35	36	37	38	39
40	41	42	43	44	45	46	47	48
49	50	51	52	53	54	55	56	57
58	59	60	61	62	63	64	65	66
67	68	69	70	71	72	73	74	75
76	77	78	79	80	81	82	83	84
85	86	87	88	89	90	91	92	93
94	95	96	97	98	99	100	101	102
103	104	105	106	107	108	109	110	111
112	113	114	115	116	117	118	119	120
121	122	123	124	125	126	127	128	129
130	131	132	133	134	135	136	137	138
139	140	141	142	143	144	145	146	147
148	149	150	151	152	153	154	155	156
157	158	159	160	161	162	163	164	165
166	167	168	169	170	171	172	173	174
175	176	177	178	179	180	181	182	183
184	185	186	187	188	189	190	191	192
193	194	195	196	197	198	199	200	201
202	203	204	205	206	207	208	209	210
211	212	213	214	215	216	217	218	219
220	221	222	223	224	225	226	227	228
229	230	231	232	233	234	235	236	237
238	239	240	241	242	243	244	245	246
247	248	249	250	251	252	253	254	255
256	257	258	259	260	261	262	263	264
265	266	267	268	269	270	271	272	273
274	275	276	277	278	279	280	281	282
283	284	285	286	287	288	289	290	291
292	293	294	295	296	297	298	299	300

FAYETTE COUNTY - WEST VIRGINIA
Office of Assessor

District: Oak Hill Corp
Map No: 09-0017
Drawn By: Eddie Young
Date: Feb 23, 2007
Scale: 1 inch equals 100 feet