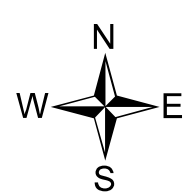
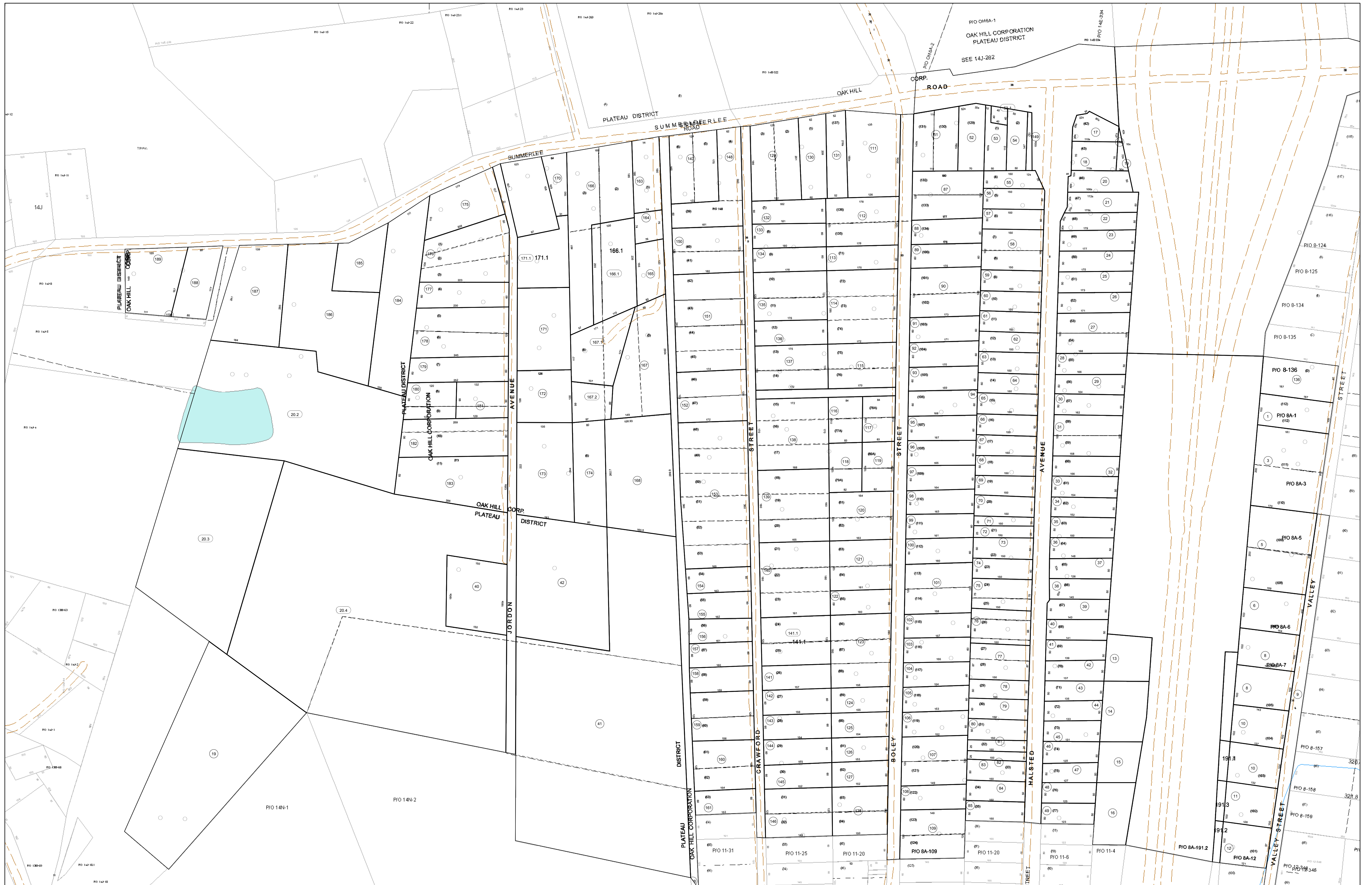


09-008A



FOR TAX PURPOSES ONLY

Prepared By:
Eddie Young
 Fayette County Assessor

Legend	
Property Line	Original Lot Line
Edge of pavement or roadway	Deed lot number (in parenthesis)
Corporation line	Parcel or index number
District line	Improvement
County Line	Railroad

Restriction	
(15)	
(16)	
(17)	
(18)	
(19)	
(20)	
(21)	

68	6	69	69M	34
13	13C	13A	14	
131	131	131A	7	141A
41	138R	135	11	12
14	15	16	17	22
21	23	24	25	26

FAYETTE COUNTY - WEST VIRGINIA
 Office of Assessor

District: Oak Hill Corp
 Map No: 09-008A
 Drawn By: Feb 23, 2007
 Date: 1 inch equals 100 feet
 Scale: